

**SAMSUNG**

# USER MANUAL

---

**SERIES 4 & 5**

Thank you for purchasing this Samsung product.

To receive more complete service, please register your product at [www.samsung.com](http://www.samsung.com)

Model \_\_\_\_\_ Serial No. \_\_\_\_\_

### For India only

#### ATTENTION:

This product is qualified for the BEE Star rating in the 'Home' Mode. The Objectives of Star Labeling Program is designed to promote energy efficient products and practices.

When the television is initially set up, it is designed to meet the BEE Star Labeling requirements while maintaining optimum picture quality.


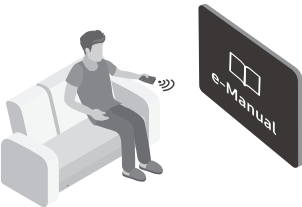


- Changes to certain functionalities of this television (TV Guide, Picture/sound etc) may change the power consumption.
- Depending upon such changed setting (eg., Retail mode), the power consumption may vary which possibly could exceed the stated energy consumption.

To reset the television to Star rating qualified settings, select 'Home' mode from the initial set-up procedure in 'factory settings' under the 'Set-up' menu.

## Before Reading This User Manual

This TV comes with this user manual and an embedded e-Manual.







Before reading this user manual, review the following:

	<b>User Manual</b>	Read this provided user manual to see information about product safety, installation, accessories, initial configuration, and product specifications.
	<b>e-Manual</b>	For more information about this TV, read the e-Manual embedded in the product. <ul style="list-style-type: none"><li>• To open the e-Manual, MENU  → Support → e-Manual → ENTER </li></ul>

On the website, you can download the user manual and see its contents on your PC or mobile device.

# Warning! Important Safety Instructions

Please read the Safety Instructions before using your TV.

CAUTION			Class II product: This symbol indicates that a safety connection to electrical earth (ground) is not required.
RISK OF ELECTRIC SHOCK. DO NOT OPEN.			
CAUTION: TO REDUCE THE RISK OF ELECTRIC SHOCK, DO NOT REMOVE COVER (OR BACK). THERE ARE NO USER SERVICEABLE PARTS INSIDE. REFER ALL SERVICING TO QUALIFIED PERSONNEL.			AC voltage: Rated voltage marked with this symbol is AC voltage.
	This symbol indicates that high voltage is present inside. It is dangerous to make any kind of contact with any internal part of this product.		DC voltage: Rated voltage marked with this symbol is DC voltage.
	This symbol indicates that this product has included important literature concerning operation and maintenance.		Caution. Consult instructions for use: This symbol instructs the user to consult the user manual for further safety related information.

- The slots and openings in the cabinet and in the back or bottom are provided for necessary ventilation. To ensure reliable operation of this apparatus and to protect it from overheating, these slots and openings must never be blocked or covered.
  - Do not place this apparatus in a confined space, such as a bookcase or built-in cabinet, unless proper ventilation is provided.
  - Do not place this apparatus near or over a radiator or heat register, or where it is exposed to direct sunlight.
  - Do not place vessels (vases etc.) containing water on this apparatus, as this can result in a fire or electric shock.
- Do not expose this apparatus to rain or place it near water (near a bathtub, washbowl, kitchen sink, or laundry tub, in a wet basement, or near a swimming pool, etc.). If this apparatus accidentally gets wet, unplug it and contact an authorised dealer immediately.
- This apparatus uses batteries. In your community, there might be environmental regulations that require you to dispose of these batteries properly. Please contact your local authorities for disposal or recycling information.
- Do not overload wall outlets, extension cords, or adaptors beyond their capacity, since this can result in fire or electric shock.
- Power-supply cords should be placed so that they are not likely to be walked on or pinched by items placed upon or against them. Pay particular attention to cords at the plug end, at wall outlets, and at the point where they exit from the appliance.

- To protect this apparatus from a lightning storm, or when left unattended and unused for long periods of time, unplug it from the wall outlet and disconnect the antenna or cable system. This will prevent damage to the set due to lightning and power line surges.
- Before connecting the AC power cord to the DC adaptor outlet, make sure that the voltage designation of the DC adaptor corresponds to the local electrical supply.
- Never insert anything metallic into the open parts of this apparatus. This may cause a danger of electric shock.
- To avoid electric shock, never touch the inside of this apparatus. Only a qualified technician should open this apparatus.
- Be sure to plug in the power cord until it is firmly seated. When unplugging the power cord from a wall outlet, always pull on the power cord's plug. Never unplug it by pulling on the power cord. Do not touch the power cord with wet hands.
- If this apparatus does not operate normally - in particular, if there are any unusual sounds or smells coming from it - unplug it immediately and contact an authorised dealer or service centre.
- Be sure to pull the power plug out of the outlet if the TV is to remain unused or if you are to leave the house for an extended period of time (especially when children, elderly, or disabled people will be left alone in the house).
  - Accumulated dust can cause an electric shock, an electric leakage, or a fire by causing the power cord to generate sparks and heat or by causing the insulation to deteriorate.
- Be sure to contact an authorised Samsung service centre for information if you intend to install your TV in a location with heavy dust, high or low temperatures, high humidity, chemical substances, or where it will operate 24 hours a day such as in an airport, a train station, etc. Failure to do so may lead to serious damage to your TV.
- Use only a properly grounded plug and wall outlet.
  - An improper ground may cause electric shock or equipment damage. (Class I Equipment only.)
- To turn off this apparatus completely, disconnect it from the wall outlet. To ensure you can unplug this apparatus quickly if necessary, make sure that the wall outlet and power plug are readily accessible.
- Store the accessories (batteries, etc.) in a location safely out of the reach of children.
- Do not drop or strike the product. If the product is damaged, disconnect the power cord and contact a Samsung service centre.
- To clean this apparatus, unplug the power cord from the wall outlet and wipe the product with a soft, dry cloth. Do not use any chemicals such as wax, benzene, alcohol, thinners, insecticide, aerial fresheners, lubricants, or detergents. These chemicals can damage the appearance of the TV or erase the printing on the product.

- Do not expose this apparatus to dripping or splashing.
- Do not dispose of batteries in a fire.
- Do not short-circuit, disassemble, or overheat the batteries.
- There is danger of an explosion if you replace the batteries used in the remote with the wrong type of battery. Replace only with the same or equivalent type.
- To reduce the risk of fire or electric shock, do not expose this apparatus to rain or moisture.
- Apparatus shall not be exposed to dripping or splashing and no objects filled with liquids, such as vases, shall not be placed on the apparatus.
- **WARNING: FOR INDOOR USE ONLY**

\* Figures and illustrations in this User Manual are provided for reference only and may differ from the actual product appearance. Product design and specifications may change without notice.

# Contents

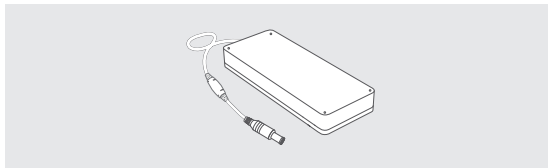
Before Reading This User Manual	2
Warning! Important Safety Instructions	3
<b>01 What's in the Box?</b>	
<b>02 TV Installation</b>	
Mounting the TV on a wall	9
Providing proper ventilation for your TV	10
Attaching the TV to the Stand	11
Safety Precaution: Securing the TV to the wall to prevent falling	11
<b>03 The Remote Control</b>	
About the Buttons on the Remote Control	12
Installing batteries into the remote control (Battery size: AAA)	13
<b>04 Running the Initial Setup</b>	
Using the TV Controller	14
<b>05 HDMI (ARC) Connection</b>	
<b>06 Changing the Input Source</b>	
Source	16
How to use Edit Name Information	16
Anynet+ (HDMI-CEC)	16

<b>07</b>	<b>How to use the e-Manual</b>	
	Screen Display	17
	How to toggle between an e-Manual topic and the corresponding OSD menu(s).	18
	How to search for a topic on the index page	18
<b>08</b>	<b>Troubleshooting and Maintenance</b>	
	Troubleshooting	19
	Teletext Feature	24
	The teletext pages are organised according to six categories	25
	Anti-theft Kensington Lock	25
	Caring for the TV	26
<b>09</b>	<b>Specifications and Other Information</b>	
	Specifications	27
	Environmental Considerations	28
	Decreasing power consumption	28
	Suffix : Parental Rating - Thailand only	29
	Licences	30

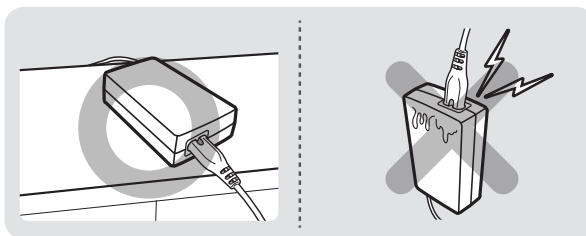
# 01 What's in the Box?

Make sure the following items are included with your TV. If any items are missing, contact your dealer.

- Remote Control
- Batteries (AAA x 2) (Not available in some locations)
- User Manual
- Warranty Card / Regulatory Guide (Not available in some locations)
- TV Power Cable (Depending on the country and model)



Power Adapter  
(Depending on the country and model)



- The items' colours and shapes may vary depending on the models.
- Cables not included can be purchased separately.
- Check for any accessories hidden behind or in the packing materials when opening the box.



**Warning:** Screens can be damaged from direct pressure when handled incorrectly. We recommend lifting the TV at the edges, as shown.





## 02 TV Installation

### Mounting the TV on a wall

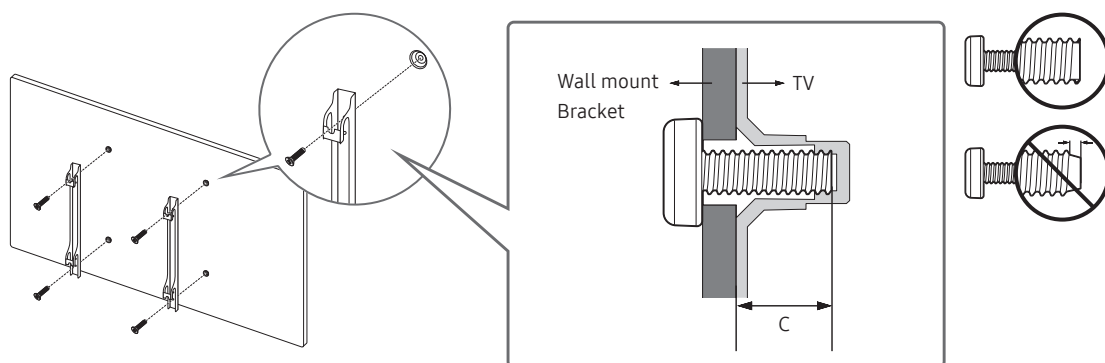


If you mount this TV on a wall, follow the instructions exactly as set out by the manufacturer. Unless it is correctly mounted, the TV may slide or fall and cause serious injury to a child or adult and serious damage to the TV.

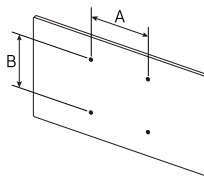
For models providing wall mount adapters, install them as shown in the figure below before installing the wall mount kit.

- Refer to the installation manual included with the Samsung wall mount kit.

You can mount the TV on the wall using a wall mount kit (sold separately).



- Samsung Electronics is not responsible for any damage to the product or injury to yourself or others if you choose to install the wall mount on your own.
- You can install your wall mount on a solid wall perpendicular to the floor. Before attaching the wall mount to surfaces other than plaster board, contact your nearest dealer for additional information. If you install the TV on a ceiling or slanted wall, it may fall and result in severe personal injury.
- Standard dimensions for wall mount kits are shown in the table on the next page.
- If you are installing a third-party wall mount, note that the length of the screws you can use to attach the TV to the wall mount is shown in column C in the table on the next page.
- When installing a wall mount kit, we recommend you fasten all four VESA screws.
- If you want to install a wall mount kit that attaches to the wall using two top screws only, be sure to use a Samsung wall mount kit that supports this type of installation. (You may not be able to purchase this type of wall mount kit, depending on the geographical region.)

Model Name	VESA screw hole specs (A * B) in millimetres	C (mm)	Standard Screw	Quantity	
UA32N4000 UA32N5000	100 x 100	26.0-28.0	M4	4	
UA32N4100		21.9-23.9			
UA40N5000	200 x 200	25.7-27.7	M8		
UA43N5000		25.2-27.2			
UA43N5100		21.1-23.1			
UA49N5100		21.6-23.6			
UA49N5000		25.5-27.5			



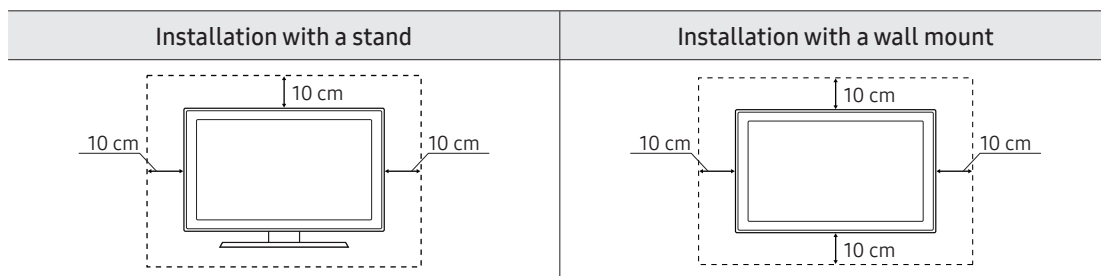
**Do not install your wall mount kit while your TV is turned on. This may result in personal injury from electric shock.**

- Do not use screws that are longer than the standard dimension or do not comply with the VESA standard screw specifications. Screws that are too long may cause damage to the inside of the TV set.
- For wall mounts that do not comply with the VESA standard screw specifications, the length of the screws may differ depending on the wall mount specifications.
- Do not fasten the screws too firmly. This may damage the product or cause the product to fall, leading to personal injury. Samsung is not liable for these kinds of accidents.
- Samsung is not liable for product damage or personal injury when a non-VESA or non-specified wall mount is used or when the consumer fails to follow the product installation instructions.
- Do not mount the TV at more than a 15 degree tilt.
- Always have two people mount the TV onto a wall.

## Providing proper ventilation for your TV

When you install your TV, maintain a distance of at least 10 cm between the TV and other objects (walls, cabinet sides, etc.) to ensure proper ventilation. Failing to maintain proper ventilation may result in a fire or a problem with the product caused by an increase in its internal temperature.

When you install your TV with a stand or a wall mount, we strongly recommend you use parts provided by Samsung Electronics only. Using parts provided by another manufacturer may cause difficulties with the product or result in injury caused by the product falling.



## Attaching the TV to the Stand

Make sure you have all the accessories shown, and that you assemble the stand following the provided assembly instructions.

### Safety Precaution: Securing the TV to the wall to prevent falling



**Caution:** Pulling, pushing, or climbing on the TV may cause the TV to fall. In particular, ensure your children do not hang on or destabilise the TV. This action may cause the TV to tip over, causing serious injuries or death. Follow all safety precautions provided in the Safety Flyer included with your TV. For added stability and safety, you can purchase and install the anti-fall device as described below.



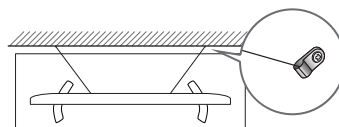
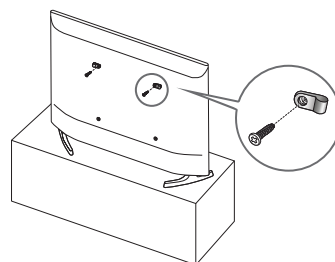
**WARNING:** Never place a television set in an unstable location. The television set may fall, causing serious personal injury or death. Many injuries, particularly to children, can be avoided by taking simple precautions such as

- Using cabinets or stands recommended by the manufacturer of the television set.
- Only using furniture that can safely support the television set.
- Ensuring the television set is not overhanging the edge of the supporting furniture.
- Not placing the television set on tall furniture (for example, cupboards or bookcases) without anchoring both the furniture and the television set to a suitable support.
- Not placing the television set on cloth or other materials that may be located between the television set and supporting furniture.
- Educating children about the dangers of climbing on furniture to reach the television set or its controls.

If you are retaining and relocating the television set that you are replacing with this new set, you should apply the same precautions to the old set.

### Preventing the TV from falling

1. Using the appropriate screws, firmly fasten a set of brackets to the wall. Confirm that the screws are firmly attached to the wall.
  - You may need additional material such as wall anchors depending on the type of wall.
2. Using the appropriately sized screws, firmly fasten a set of brackets to the TV.
  - For the screw specifications, refer to the standard screw part in the table under "Mounting the TV on a wall".
3. Connect the brackets fixed to the TV and the brackets fixed to the wall with a durable, heavy-duty string, and then tie the string tightly.
  - Install the TV near the wall so that it does not fall backwards.
  - Connect the string so that the brackets fixed to the wall are at the same height as or lower than the brackets fixed to the TV.

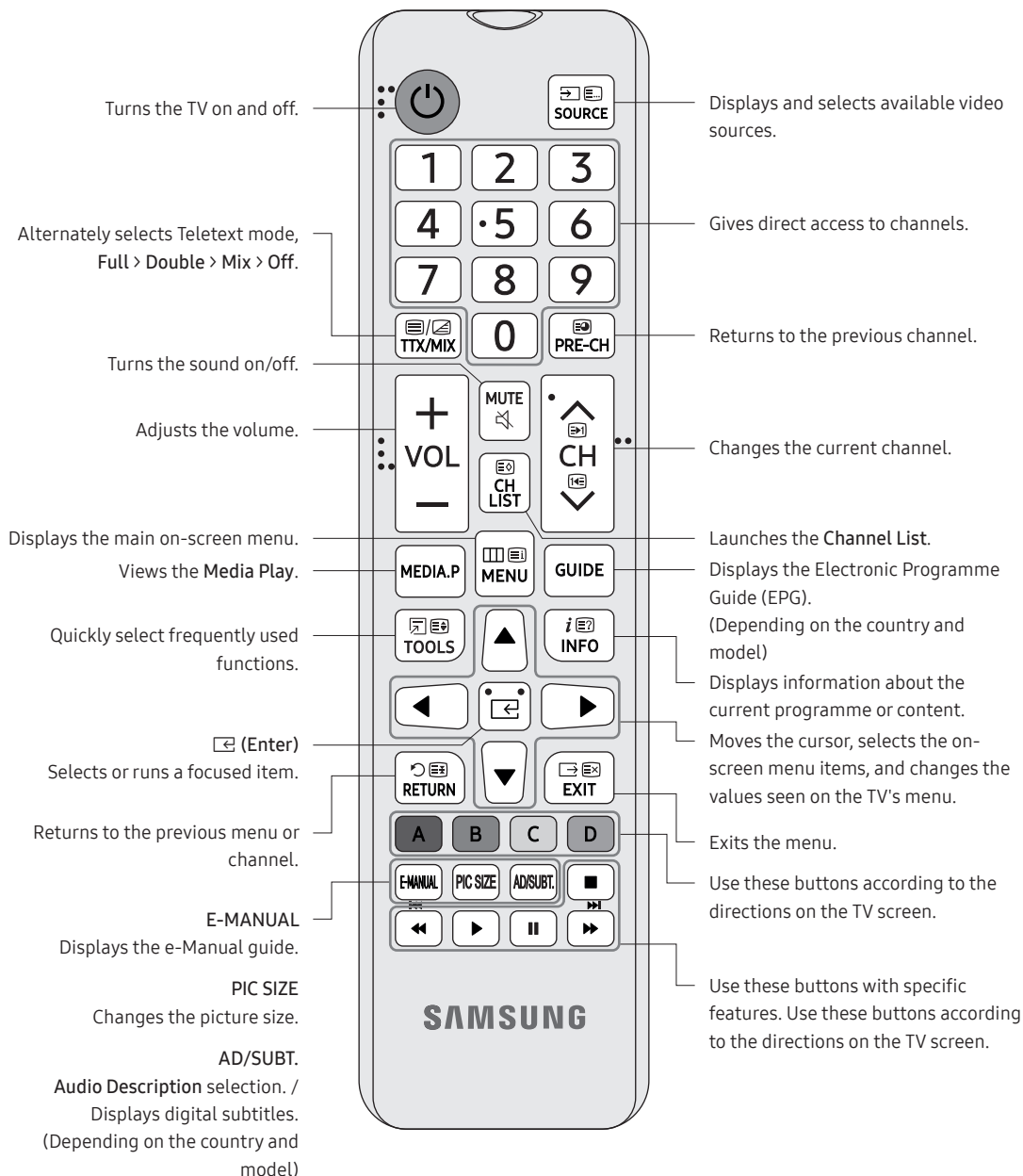


- The product colour and shape may vary depending on the model.

# 03 The Remote Control

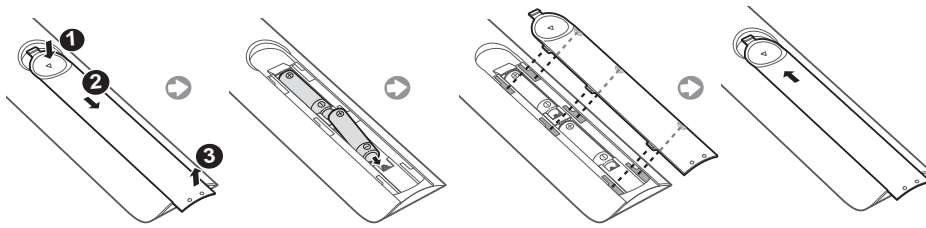
## About the Buttons on the Remote Control

- This remote control has Braille points on the Power, Channel, Volume, and Enter buttons and can be used by visually impaired persons.
- The images, buttons, and functions of the remote control may differ depending on the model.



## Installing batteries into the remote control (Battery size: AAA)

Match the polarity of the batteries to the symbols on the battery compartment.




- The colour and shape of the remote may vary depending on the model.
- Use the remote control within 7 m of the TV.
- Bright lights may affect the performance of the remote control. Avoid using the remote control near special fluorescent lights or neon signs.

## 04 Running the Initial Setup

When you turn on your TV for the first time, it immediately starts the Initial Setup. The Initial Setup allows you to configure the basic settings for the TV to operate, such as broadcast reception, channel search, and network connection, at one time.

- Before starting the Initial Setup, be sure to connect external devices first.

You can also start the Initial Setup using the TV's menu (MENU  > System > Setup).

Follow the instructions displayed on the Initial Setup screen and configure the TV's basic settings to suit your viewing environment.

### If You Want to Reset This Feature...

Select **System** → **Setup** (Initial Setup). Enter your 4 digit PIN number. The default PIN number is "0000".

If you want to change the PIN number, use the **Change PIN** function.

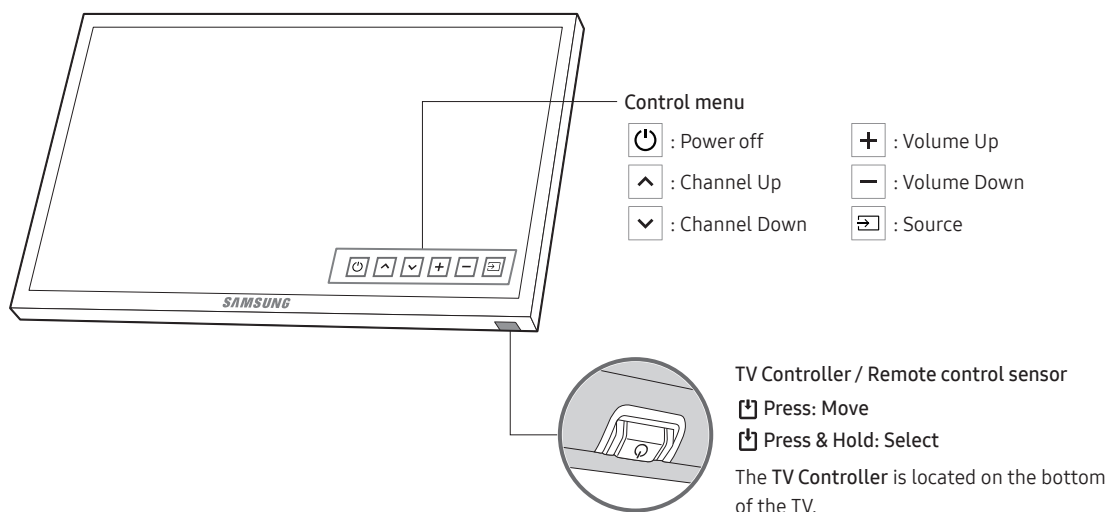
You should do **Setup** (MENU  → **System**) again at home even though you did in shop already.

- If you forget the PIN code, press the remote control buttons in the following sequence in Standby mode, which resets the PIN to "0000": MUTE → 8 → 2 → 4 → POWER (on)

## Using the TV Controller

You can turn on the TV with the **TV Controller** button at the bottom of the TV, and then use the **Control menu**.

The **Control menu** appears when the TV Controller is pressed while the TV is On. For more information about its usage, refer to the figure below.



## 05 HDMI (ARC) Connection

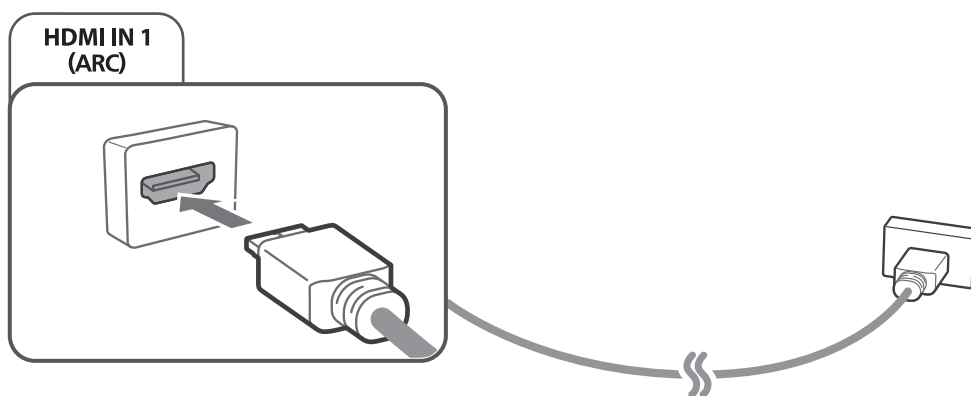
- This function is not available on certain models in specific geographical areas.

Before connecting any external devices and cables to the TV, first verify the model number of the TV you purchased. A sticker showing the model number is attached to the back of the TV. The connection method varies depending on the model.

ARC (Audio Return Channel) enables digital sound output using just an HDMI cable. However, ARC is only available through the HDMI IN 1 (ARC) port and only when the TV is connected to an ARC-enabled AV receiver.

- Some models may not support ARC.
- The number of connectors and their names and locations may vary depending on the model.

Connect an HDMI cable to the TV's HDMI IN 1 (ARC) connector and the device's HDMI OUT connector.



# 06 Changing the Input Source

## Source

Use to select TV or other external input sources such as DVD / Blu-ray players / cable box / STB satellite receiver connected to the TV.

1. Press the **SOURCE** button on your remote.
2. Select a desired external input source.

## How to use Edit Name

In the **Source**, press the **TOOLS** button, and then you can set an external input sources name you want.

## Information

You can see detailed information about the connected external device.

## Anynet+ (HDMI-CEC)

Displays a list of **Anynet+ (HDMI-CEC)**-compliant devices that are connected to the TV.

- This option is only available when **Anynet+ (HDMI-CEC)** is **On**.
- This function is not available on certain models in specific geographical areas.



# 07 How to use the e-Manual



You can find instructions about your TV's features in the **e-Manual** in your TV. To use, press the **E-MANUAL** button on your remote. Move the cursor using the up/down/right/left buttons to highlight a category, then a topic, and then press the **ENTER** button. The **e-Manual** displays the page you want to see.

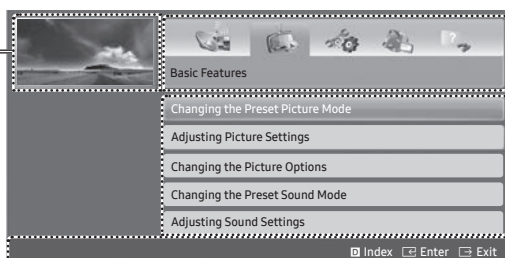
You can also access it through the menu:

**MENU** → **Support** → **e-Manual** → **ENTER**

- To return to the **e-Manual** main menu, press the **E-MANUAL** button on the remote.

## Screen Display

Currently displayed video, TV Programme, etc.



The category list. Press ◀ or ▶ button to select the category you want.

Displays the sub-menu list. Use the arrow buttons on your remote to move the cursor. Press **ENTER** button to select the sub-menu you want.

### Operation Buttons

**Index**: Displays the index screen.

- **Index** available depending on the language.

**Enter**: Selects a category or sub-menu.

**Exit**: Exit the **e-Manual**.

<Viewing the Contents>

**Try now**: Displays the OSD menu that corresponds to the topic. To return to the **e-Manual** screen, press the **E-MANUAL** button.

**Home**: Moves to the **e-Manual** home screen.

**Page**: Moves to previous or next page.

**Zoom**: Magnifies a screen.

Press the **Zoom** button to magnify the screen. You can scroll through the magnified screen by using the ▲ or ▼ buttons. To return to the screen to normal size, press the **RETURN** button.

## How to toggle between an e-Manual topic and the corresponding OSD menu(s).

- This function is not enabled in some menus.
- You cannot use the **Try now** function if the menu is not activated.

Method 1	Method 2
<ol style="list-style-type: none"><li>1. If you want to use the menu that corresponds to an <b>e-Manual</b> topic, press the red button to select <b>Try now</b>.</li><li>2. To return to the <b>e-Manual</b> screen, press the <b>E-MANUAL</b> button.</li></ol>	<ol style="list-style-type: none"><li>1. Press the <b>ENTER</b> button when a topic is displayed. “<b>Are you sure?</b>” appears. Select <b>Yes</b>, and then press the <b>ENTER</b> button. The OSD window appears.</li><li>2. To return to the <b>e-Manual</b> screen, press the <b>E-MANUAL</b> button.</li></ol>

## How to search for a topic on the index page

- This function may not be supported depending on the language.
1. If you want to search a keyword, press the blue button to select **Index**.
  2. Press the ◀ or ▶ button to select a character order you want.
  3. Press the ▲ or ▼ button to select a keyword you want to see, and then press the **ENTER** button.
  4. You can view the corresponding **e-Manual** instruction screen.
    - To close the **Index** screen, press the **RETURN** button.

# 08 Troubleshooting and Maintenance

## Troubleshooting

If the TV seems to have a problem, first try this list of possible problems and solutions. If none of these troubleshooting tips apply, visit “[www.samsung.com](http://www.samsung.com)”, then click on Support, or call Samsung customer service centre.

### Picture Quality

- First of all, please perform the **Picture Test** and confirm that your TV is properly displaying test image. (go to **MENU** - **Support** - **Self Diagnosis** - **Picture Test**) If the test image is properly displayed, the poor picture may be caused by the source or signal.

**The TV image does not look as good as it did in the store.**

- If you have an analogue cable box or satellite box, upgrade to a digital cable box or satellite box. Use HDMI or Component cables to deliver HD (high definition) picture quality.
- Cable/Satellite subscribers: Try digital stations from the channel line up.
- Aerial connection: Try HD stations after performing Auto tuning.
- Many HD channels are up scaled from SD (Standard Definition) contents.
- Adjust the cable box or satellite box video output resolution to 1080i or 720p.
- Make sure you are watching the TV at the minimum recommended distance based on the size and definition of the signal.

**The picture is distorted: macro block, small block, dots, pixelisation error.**

- Compression of video contents may cause picture distortion especially in fast moving pictures such as sports and action movies.
- Low signal level or bad quality can cause picture distortion. This is not a TV issue.
- Mobile phones used close to the TV (cca up to 1m) may cause noise in picture on analogue and digital TV.

**Colour is wrong or missing.**

- If you're using a component connection, make sure the component cables are connected to the correct jacks. Incorrect or loose connections may cause colour problems or a blank screen.

There is poor colour or brightness.

- Adjust the **Picture** options in the TV menu. (go to **Picture Mode / Colour / Brightness / Sharpness**)
- Adjust **Energy Saving** option in the TV menu. (go to **MENU** - **System - Eco Solution - Energy Saving**)
- Try resetting the picture to view the default picture settings. (go to **MENU** - **Picture - Reset Picture**)

There is a dotted line on the edge of the screen.

- If the picture size is set to **Screen Fit**, change it to **16:9**.
- Change the cable box or satellite box resolution.

The picture is black and white.

- If you are using an AV composite input, connect the video cable (yellow) to the Green jack of component input 1 on the TV.

When changing channels, the picture freezes or is distorted or delayed.

- If connected with a cable box or satellite box, please try to reset the cable box or satellite box. Reconnect the AC cord and wait until the cable box or satellite box reboots. It may take up to 20 minutes.
- Set the output resolution of the cable box or satellite box to 1080i or 720p.

## Sound Quality

- First of all, please perform the **Sound Test** to confirm that your TV audio is properly operating. (go to **MENU** - **Support - Self Diagnosis - Sound Test**)
- If the audio is ok, the sound problem may be caused by the source or signal.

There is no sound or the sound is too low at maximum volume.

- Please check the volume of the device (cable box or satellite box, DVD, Blu-ray etc) connected to your TV.

The picture is good but there is no sound.

- Set the **Sound Output** option to **TV Speaker** in the sound menu.
- If you are using an external device, make sure the audio cables are connected to the correct audio input jacks on the TV.
- If you are using an external device, check the device's audio output option (ex. you may need to change your cable box's or satellite box's audio option to HDMI when you have a HDMI connected to your TV).
- If you are using a DVI to HDMI cable, a separate audio cable is required.
- Reboot the connected device by reconnecting the device's power cable.

The speakers are making an inappropriate noise.

- Check the cable connections. Make sure a video cable is not connected to an audio input.
- For aerial or cable connections, check the signal strength. Low signal level may cause sound distortion.

## No Picture, No Video

The TV will not turn on.

- Make sure the AC power cord is securely plugged in to the wall outlet and the TV.
- Make sure the wall outlet is working.
- Try pressing the **POWER** (⏻) button at the bottom of the TV to make sure the problem is not the remote. If the TV turns on, refer to “The remote control does not work”.

The TV turns off automatically.

- Ensure the **Sleep Timer** is set to **Off** in the **Time** menu.
- If your PC is connected to the TV, check your PC power settings.
- Make sure the AC power cord is plugged in securely to the wall outlet and the TV.
- **No Signal Power Off** turns off the TV if no signal has been received by the TV for a specified period time. **Auto Power Off** turns off the TV if there has been no user input in four hours.

There is no picture/video.

- Check cable connections (remove and reconnect all cables connected to the TV and external devices).
- Set your external device's (cable box or satellite box, DVD, Blu-ray etc) video outputs to match the connections to the TV input. For example, if an external device's output is HDMI, it should be connected to an HDMI input on the TV.
- Make sure your connected devices are powered on.
- Be sure to select the TV's correct source by pressing the **SOURCE** button on the remote control.
- Reboot the connected device by reconnecting the device's power cable.

## Aerial (Air/Cable) Connection (Cable: depending on the country)

The TV is not receiving all channels.

- Make sure the Aerial cable is connected securely.
- Please try **Setup** (Initial setup) to add available channels to the channel list. Go to **MENU** - **System - Setup** (Initial setup) and wait for all available channels to be stored.
- Verify the Aerial is positioned correctly.

The picture is distorted: macro block, small block, dots, pixelisation error.

- Compression of video contents may cause picture distortion, especially on fast moving pictures such as sports and action movies.
- A low signal can cause picture distortion. This is not a TV issue.

## Others

### **The picture will not display in full screen.**

- HD channels will have black bars on either side of the screen when displaying up scaled SD (4:3) contents.
- Black bars on the top and bottom will appear during movies that have aspect ratios different from your TV.
- Adjust the picture size options on your external device or TV to full screen.

### **The remote control does not work.**

- Replace the remote control batteries with the poles (+/-) in the right direction.
- Clean the sensor's transmission window on the remote.
- Try pointing the remote directly at the TV from 1.5 ~ 1.8 m away.

### **The cable box or satellite box remote control doesn't turn the TV on or off, or adjust the volume.**

- Programme the cable box or satellite box remote control to operate the TV. Refer to the cable box or satellite box user manual for the SAMSUNG TV code.

### **A "Mode Not Supported" message appears.**

- Check the supported resolution of the TV, and adjust the external device's output resolution accordingly.

### **There is a plastic smell from the TV.**

- This smell is normal and will dissipate over time.

### **The TV Signal Information is unavailable in the Self Diagnosis Test menu.**

- This function is only available with digital channels from an Aerial / RF / Coax connection.

### **TV is tilted to the right or left side.**

- Remove the stand base from the TV and reassemble it.

### **There are difficulties assembling the stand base.**

- Make sure the TV is placed on a flat surface. If you can not remove the screws from the TV, please use a magnetised screw driver.

### **The Broadcasting menu is grey out (unavailable).**

- The **Broadcasting** menu is only available when the TV source is selected.

**Your settings are lost after 5 minutes or every time the TV is turned off.**

- If the TV is in the **Store Demo** mode, it will reset audio and picture settings every 5 minutes. If you want to change the settings from **Store Demo** mode to **Home Use**, press the **SOURCE** button to select **TV** mode, and go to **MENU** - **Support** - **Use Mode**.

**You have intermittent loss of audio or video.**

- Check the cable connections and reconnect them.
- Loss of audio or video can be caused by using overly rigid or thick cables. Make sure the cables are flexible enough for long term use. If mounting the TV to the wall, we recommend using cables with 90 degree connectors.

**You see small particles when you look closely at the edge of the frame of the TV.**

- This is part of the product's design and is not a defect.

**The PIP menu is not available.**

- PIP functionality is only available when you are using a HDMI or components source.

**You turned the TV off 45 minutes ago, and it turned on again.**

- It is normal. The TV operates the OTA (Over The Aerial) function itself to upgrade firmware downloaded whilst your watching TV.

**There are recurrent picture/sound issues.**

- Check and change the signal/source.

**A reaction may occur between the rubber cushion pads on the base stand and the top finish of some furniture.**

- To prevent this, use felt pads on any surface of the TV that comes in direct contact with furniture.

**The message "This file may not be playable properly," appears.**

- This may appear because of high bit rate of content. Content generally will play but could experience some playability issue.

You can keep your TV in optimum operating condition by upgrading to the latest firmware ([www.samsung.com](http://www.samsung.com) → Support) by USB.

This TFT LED panel uses a panel consisting of sub pixels which require sophisticated technology to produce. However, there may be a few bright or dark pixels on the screen. These pixels will have no impact on the performance of the product.

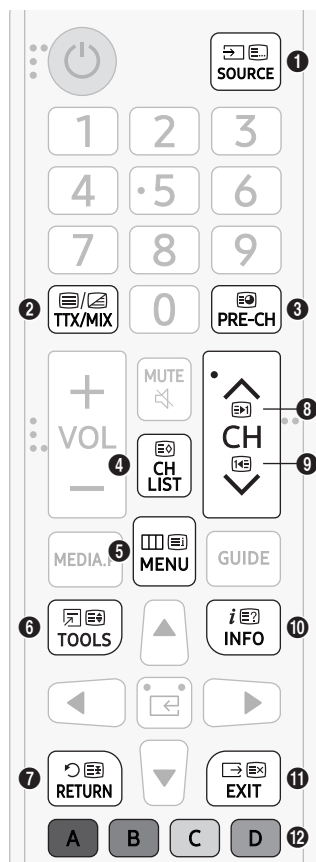
Some functions and pictures shown in this manual are available on specific models only.

## Teletext Feature

- To enter the Teletext feature, press the TTX/MIX button on the remote control.
- To exit from the Teletext feature, press the button on the remote control until live TV appears.
- This function is available only in the channel that supports the teletext service.
- This function may not be supported depending on the model or geographical area.

The index page of the **Teletext** service gives you information on how to use the service. For **Teletext** information to be displayed correctly, channel reception must be stable. Otherwise, information may be missing or some pages may not be displayed.

- You can change Teletext pages by pressing the numeric buttons on the remote control.

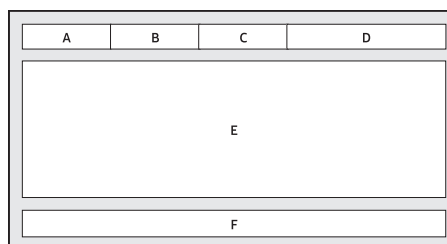


- 1 **List/Flof:** Selects the Teletext mode. If pressed during LIST mode, switches the mode to List save mode. In List save mode, you can save a Teletext page into a list using the (Store) button.
- 2 **Full TTX / Double TTX / Mix / Off:** The teletext mode is activated in the channel that is being watched. Each time you press the button, the teletext mode changes in the order of Full TTX → Double TTX → Mix → Off.
- 3 **Sub Page:** Displays the available sub-page.
- 4 **Store:** Stores the Teletext pages.
- 5 **Index:** Displays the index (contents) page at any time while you are viewing Teletext.
- 6 **Size:** Displays the teletext on the upper half of the screen in double-size. To move the text to the lower half of the screen, press it again. For normal display, press it once again.
- 7 **Hold:** Holds the display at the current page, in the case that there are several secondary pages that follow automatically. To undo, press it again.
- 8 **Page Up:** Displays the next Teletext page.
- 9 **Page Down:** Displays the previous Teletext page.
- 10 **Reveal/Conceal:** Displays or hides the hidden text (answers to quiz games, for example). To display the normal screen, press it again.
- 11 **Cancel:** Shrinks the Teletext display to overlap with the current broadcast.
- 12 **Colour buttons (red, green, yellow, blue):** If the FASTEXT system is used by the broadcasting company, the different topics on a Teletext page are colour-coded and can be selected by pressing the coloured buttons. Press the colour corresponding to the topic of your choice. A new colour coded page is displayed. Items can be selected in the same way. To display the previous or next page, press the corresponding coloured button.



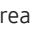

## The teletext pages are organised according to six categories

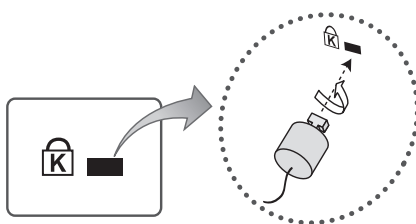
Part	Contents
A	Selected page number.
B	Broadcasting channel identity.
C	Current page number or search indications.
D	Date and time.
E	Text.
F	Status information. FASTEXT information.



## Anti-theft Kensington Lock

The Kensington Lock is not supplied by Samsung. It is a device used to physically fix the system when using it in a public place. The appearance and locking method may differ from the illustration depending on the manufacturer. Refer to the manual provided with the Kensington Lock for additional information on proper use.

- Please find a “” icon on the rear of the TV. A Kensington slot is beside the “” icon.
- The position and colour may differ depending on the model.



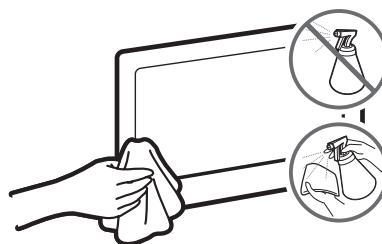
<Optional>

### To lock the product, follow these steps:

1. Wrap the Kensington lock cable around a large, stationary object such as desk or chair.
2. Slide the end of the cable with the lock attached through the looped end of the Kensington lock cable.
3. Insert the locking device into the Kensington slot on the product.
4. Lock the lock.
  - These are general instructions. For exact instructions, see the User manual supplied with the locking device.
  - The locking device has to be purchased separately.

## Caring for the TV

- If a sticker was attached to the TV screen, some debris can remain after you remove the sticker. Please clean the debris off before watching TV.
- The exterior and screen of the TV can get scratched during cleaning. Be sure to wipe the exterior and screen carefully using a soft cloth to prevent scratches.
- Do not spray water or any liquid directly onto the TV. Any liquid that goes into the product may cause a failure, fire, or electric shock.
- To clean the screen, turn off the TV, then gently wipe away smudges and fingerprints on the panel with a micro-fiber cloth. Clean the body or panel of the TV with a micro-fiber cloth dampened with a small amount of water. After that, remove the moisture with a dry cloth. While cleaning, do not apply strong force to the surface of the panel because it can damage the panel. Never use flammable liquids (benzene, thinner, etc.) or a cleaning agent. For stubborn smudges, spray a small amount of screen cleaner on a micro-fiber cloth, and then use the cloth to wipe away the smudges.



# 09 Specifications and Other Information

## Specifications

Model Name	UA32N4000 / UA32N5000	UA32N4100
Display Resolution	1366 x 768	1366 x 768
Screen Size Measured Diagonally	80 cm	80 cm
Sound (Output)	10 W	40 W
Dimensions (W x H x D) Body With stand	73.74 x 43.80 x 7.41 cm 73.74 x 46.54 x 15.05 cm	73.74 x 43.80 x 7.41 cm 73.74 x 46.54 x 15.05 cm
Weight Without Stand With Stand	3.8 kg 3.9 kg	4.0 kg 4.1 kg
Model Name	UA40N5000	UA43N5000
Display Resolution	1920 x 1080	1920 x 1080
Screen Size Measured Diagonally	100 cm	108 cm
Sound (Output)	20 W	20 W
Dimensions (W x H x D) Body With stand	91.71 x 52.77 x 7.70 cm 91.71 x 55.24 x 17.03 cm	97.99 x 57.19 x 7.73 cm 97.99 x 59.66 x 17.03 cm
Weight Without Stand With Stand	7.0 kg 7.2 kg	8.0 kg 8.2 kg
Model Name	UA43N5100	UA49N5000
Display Resolution	1920 x 1080	1920 x 1080
Screen Size Measured Diagonally	108 cm	123 cm
Sound (Output)	40 W	20 W
Dimensions (W x H x D) Body With stand	97.99 x 57.19 x 7.73 cm 97.99 x 59.66 x 17.03 cm	111.28 x 64.65 x 7.87 cm 111.28 x 67.36 x 18.75 cm
Weight Without Stand With Stand	8.0 kg 8.2 kg	10.3 kg 10.6 kg

Model Name	UA49N5100
Display Resolution	1920 x 1080
Screen Size Measured Diagonally	123 cm
Sound (Output)	40 W
Dimensions (W x H x D) Body	111.28 x 64.65 x 7.87 cm
With stand	111.28 x 67.36 x 18.75 cm
Weight Without Stand	10.3 kg
With Stand	10.6 kg

## Environmental Considerations

Operating Temperature	50°F to 104°F (10°C to 40°C)
Operating Humidity	10% to 80%, non-condensing
Storage Temperature	-4°F to 113°F (-20°C to 45°C)
Storage Humidity	5% to 95%, non-condensing

- The design and specifications are subject to change without prior notice.
- For information about the power supply, and more information about power consumption, refer to the label-rating attached to the product.
- You can see the label-rating attached to the back of the TV. (For some models, you can see the label-rating inside the cover terminal.)

## Decreasing power consumption

When you shut the TV off, it enters Standby mode. In Standby mode, it continues to draw a small amount of power. To decrease power consumption, unplug the power cord when you don't intend to use the TV for a long time.

## For India only

This product is RoHS compliant.



This marking on the product, accessories or literature indicates that the product and its electronic accessories should not be disposed of with other household waste at the end of their working life. To prevent possible harm to the environment or human health from uncontrolled waste disposal, please separate these items from other types of waste and recycle them responsibly to promote the sustainable reuse of material resources.

For more information on safe disposal and recycling visit our website [www.samsung.com/in](http://www.samsung.com/in) or contact our Helpline numbers-1800 40 SAMSUNG(1800 40 7267864) (Toll-Free)

WARNING - TO PREVENT THE SPREAD OF FIRE, KEEP CANDLES OR OTHER ITEMS WITH OPEN FLAMES AWAY FROM THIS PRODUCT AT ALL TIMES.



## Suffix : Parental Rating - Thailand only

Alphabet	Icon	Description
Allow All		The broadcasted rating value is not classified
Preschool		Content suitable for preschool aged children 3-5 years old
Children		Content suitable for children between 6-12 years old
General		Content suitable for general audiences
PG 13 (PG-13)		Content suitable for people aged 13 and above, but can be watched by those who are under the recommended age if parental guidance is provided
PG 18 (PG-18)		Content suitable for people aged 18 and above, but can be watched by those who are under the recommended age if parental guidance is provided
Adults		Content unsuitable for children and youngsters

## Licences



The terms HDMI and HDMI High-Definition Multimedia Interface, and the HDMI Logo are trademarks or registered trademarks of HDMI Licensing LLC in the United States and other countries.



Manufactured under license from Dolby Laboratories. Dolby, Dolby Audio, Pro Logic, and the double-D symbol are trademarks of Dolby Laboratories.



THIS PRODUCT IS SOLD WITH A LIMITED LICENCE AND IS AUTHORISED TO BE USED ONLY IN CONNECTION WITH HEVC CONTENT THAT MEETS EACH OF THE THREE FOLLOWING QUALIFICATIONS: (1) HEVC CONTENT ONLY FOR PERSONAL USE; (2) HEVC CONTENT THAT IS NOT OFFERED FOR SALE; AND (3) HEVC CONTENT THAT IS CREATED BY THE OWNER OF THE PRODUCT.

THIS PRODUCT MAY NOT BE USED IN CONNECTION WITH HEVC ENCODED CONTENT CREATED BY A THIRD PARTY, WHICH THE USER HAS ORDERED OR PURCHASED FROM A THIRD PARTY, UNLESS THE USER IS SEPARATELY GRANTED RIGHTS TO USE THE PRODUCT WITH SUCH CONTENT BY A LICENSED SELLER OF THE CONTENT.

YOUR USE OF THIS PRODUCT IN CONNECTION WITH HEVC ENCODED CONTENT IS DEEMED ACCEPTANCE OF THE LIMITED AUTHORITY TO USE AS NOTED ABOVE.

### Open Source License Notice

Open Source used in this product can be found on the following webpage.

(<http://opensource.samsung.com>) Open Source License Notice is written only English.

## Supported Video Formats

File Extension	Container	Video Codec	Resolution	Frame rate (fps)	Bit rate (Mbps)	Audio Codec
*.avi	AVI MKV ASF MP4 3GP VRO VOB PS TS	MPEG4 SP/ASP	1920 x 1080	6 ~ 30	30	Dolby Digital LPCM ADPCM (IMA, MS) AAC HE-AAC WMA Dolby Digital Plus MPEG (MP3) G.711 (A-Law, $\mu$ -Law)
*.mkv		H.264 BP/MP/HP				
*.asf		HEVC (H.265 - Main, Main10 - L4, L4.1)				
*.wmv		Motion JPEG	640 x 480		8	
*.mp4		Window Media Video v9	1920 x 1080		30	
*.3gp		MPEG2				
*.vro		MPEG1				
*.mpg						
*.mpeg						
*.ts						
*.tp						
*.trp						
*.mov						
*.flv						
*.vob						
*.svi						

### Other Restrictions

- Video content will not play, or not play correctly, if there is an error in the content or the container.
- Sound or video may not work if the contents have a standard bit rate/frame rate above the compatible Frame/sec listed in the table.
- If the Index Table is in error, the Seek (Jump) function is not supported.
- Some USB/digital camera devices may not be compatible with the player.
- The menu can be displayed late if the video is over 10Mbps (bit rate).
- HEVC codec is only available in MKV/MP4/TS containers.

### Video decoder

- Supports up to H.264, Level 4.1 (FMO/ASO/RS are not supported.)
- Supports up to H.265 - Main, Main10 - L4, L4.1
- frame rate:
  - Below 1280 x 720: 60 frame max
  - Above 1280 x 720: 30 frame max
- VC1 AP L4 is not supported.
- GMC 2 or higher is not supported.

### Audio decoder

- WMA 10 Pro supports up to 5.1 channel and M2 profile.
- WMA lossless audio is not supported.
- Vorbis supports up to 2ch.
- Dolby Digital Plus supports up to 5.1 channel.

## Supported Subtitle Formats

### External

Name	File extension
MPEG-4 timed text	.txt
SAMI	.smi
SubRip	.srt
SubViewer	.sub
Micro DVD	.sub or .txt
SubStation Alpha	.ssa
Advanced SubStation Alpha	.ass

### Internal

Name	Container	Format
Xsub	AVI	Picture Format
SubStation Alpha	MKV	Text Format
Advanced SubStation Alpha	MKV	Text Format
SubRip	MKV	Text Format
MPEG-4 Timed text	MP4	Text Format

Regarding Audio Description/Subtitles function, please check e-Manual.

## Supported Photo Formats

File Extension	Type	Resolution
*.jpg / *.jpeg	JPEG	15360 x 8640
*.bmp	BMP	4096 x 4096
*.mpo	MPO	15360 x 8640

- The MPO type file does not support Zoom, Rotate and Slide Show Effect functions.

## Supported Music Formats

File Extension	Type	Codec	Remark
*.mp3	MPEG	MPEG1 Audio Layer 3	
*.m4a / *.mpa / *.aac	MPEG4	AAC	
*.flac	FLAC	FLAC	Supports up to 2ch.
*.ogg	OGG	Vorbis	Supports up to 2ch.
*.wma	WMA	WMA	WMA 10 Pro supports up to 5.1 channel and M2 profile. (WMA lossless audio is not supported.)
*.wav	wav	wav	
*.mid / *.midi	midi	midi	type 0 and type 1



## Full available resolution

Optimal resolution for 4 & 5 series:

- 32 inches: 1366 x 768@60Hz
- Other inches: 1920 x 1080@60Hz

See specification page for full available resolution.

Mode	Resolution	Horizontal Frequency (KHz)	Vertical Frequency (Hz)	Pixel Clock Frequency (MHz)	Sync Polarity (H / V)	1366 x 768	1920 x 1080
IBM	720 x 400	31.469	70.087	28.322	-/+	✓	✓
MAC	640 x 480	35.000	66.667	30.240	-/-	✓	✓
	832 x 624	49.726	74.551	57.284	-/-	✓	✓
	1152 x 870	68.681	75.062	100.000	-/-		✓
VESA DMT	640 x 480	31.469	59.940	25.175	-/-	✓	✓
	640 x 480	37.861	72.809	31.500	-/-	✓	✓
	640 x 480	37.500	75.000	31.500	-/-	✓	✓
	800 x 600	37.879	60.317	40.000	+/+	✓	✓
	800 x 600	48.077	72.188	50.000	+/+	✓	✓
	800 x 600	46.875	75.000	49.500	+/+	✓	✓
	1024 x 768	48.363	60.004	65.000	-/-	✓	✓
	1024 x 768	56.476	70.069	75.000	-/-	✓	✓
	1024 x 768	60.023	75.029	78.750	+/+	✓	✓
	1152 x 864	67.500	75.000	108.000	+/+		✓
	1280 x 720	45.000	60.000	74.250	+/+	✓	✓
	1280 x 800	49.702	59.810	83.500	-/+		✓
	1280 x 1024	63.981	60.020	108.000	+/+		✓
	1280 x 1024	79.976	75.025	135.000	+/+		✓
	1360 x 768	47.712	60.015	85.500	+/+	✓	
	1366 x 768	47.712	59.790	85.500	+/+	✓	✓
	1440 x 900	55.935	59.887	106.500	-/+		✓
	1600 x 900RB	60.000	60.000	108.000	+/+		✓
	1680 x 1050	65.290	59.954	146.250	-/+		✓
	1920 x 1080	67.500	60.000	148.500	+/+		✓

- The interlace mode is not supported.
- The set might operate abnormally if a non-standard video format is selected.
- Optimal resolution depends on your model.

This page is intentionally  
left blank.

This page is intentionally  
left blank.

# SAMSUNG

## Contact SAMSUNG WORLD WIDE

If you have any questions or comments relating to Samsung products, please contact the SAMSUNG customer care centre.

Country	Customer Care Centre ☎	Web Site
SINGAPORE	1800 7267864   1800-SAMSUNG	<a href="http://www.samsung.com/sg/support">www.samsung.com/sg/support</a>
AUSTRALIA	1300 362 603	<a href="http://www.samsung.com/au/support">www.samsung.com/au/support</a>
NEW ZEALAND	0800 726 786	<a href="http://www.samsung.com/nz/support">www.samsung.com/nz/support</a>
VIETNAM	1800 588 889	<a href="http://www.samsung.com/vn/support">www.samsung.com/vn/support</a>
THAILAND	0-2689-3232 1800-29-3232 (Toll free)	<a href="http://www.samsung.com/th/support">www.samsung.com/th/support</a>
MYANMAR	+95-1-2399-888	<a href="http://www.samsung.com/mm/support">www.samsung.com/mm/support</a>
CAMBODIA	+855-23-993232 1800-20-3232 (Toll free)	<a href="http://www.samsung.com/th/support">www.samsung.com/th/support</a>
LAOS	+856-214-17333	
MALAYSIA	1800-88-9999 +603-7713 7420 (Overseas contact)	<a href="http://www.samsung.com/my/support">www.samsung.com/my/support</a>
INDONESIA	021-5699-7777 0800-112-8888 (All Product, Toll Free)	<a href="http://www.samsung.com/id/support">www.samsung.com/id/support</a>
PHILIPPINES	1-800-10-726-7864 [ PLDT Toll Free ] 1-800-8-726-7864 [ Globe Landline and Mobile ] 02- 422-2111 [ Standard Landline ]	<a href="http://www.samsung.com/ph/support">www.samsung.com/ph/support</a>
TAIWAN	0800-32-9999	<a href="http://www.samsung.com/tw/support">www.samsung.com/tw/support</a>
JAPAN	0120-363-905	<a href="http://www.galaxymobile.jp/jp/support">www.galaxymobile.jp/jp/support</a>
INDIA	1800 40 SAMSUNG (1800 40 7267864) (Toll-Free)	<a href="http://www.samsung.com/in/support">www.samsung.com/in/support</a>
NEPAL	16600172667 (Toll Free for NTC Only) 9801572667	<a href="http://www.samsung.com/in/support">www.samsung.com/in/support</a>
BANGLADESH	09612300300 08000300300 (Toll free)	<a href="http://www.samsung.com/in/support">www.samsung.com/in/support</a>
SRI LANKA	+9411SAMSUNG (+94117267864) +94117540540 +94115900000	<a href="http://www.samsung.com/in/support">www.samsung.com/in/support</a>
EGYPT	08000-7267864 16580	<a href="http://www.samsung.com/eg/support">www.samsung.com/eg/support</a>
ALGERIA	3004	<a href="http://www.samsung.com/n_africa/support">www.samsung.com/n_africa/support</a>
IRAN	021-8255 [CE]	<a href="http://www.samsung.com/iran/support">www.samsung.com/iran/support</a>
ISRAEL	*6963	<a href="http://www.samsung.com/il/support">www.samsung.com/il/support</a>
SAUDI ARABIA	(+966) 8002474357 (800 24/7 HELP)	<a href="http://www.samsung.com/sa/home">www.samsung.com/sa/home</a> <a href="http://www.samsung.com/sa_en">www.samsung.com/sa_en</a>
PAKISTAN	0800-Samsung (72678)	<a href="http://www.samsung.com/pk/support">www.samsung.com/pk/support</a>
TUNISIA	80 100 012	<a href="http://www.samsung.com/n_africa/support">www.samsung.com/n_africa/support</a>
U.A.E	800-SAMSUNG (800 - 726 7864)	<a href="http://www.samsung.com/ae/support">www.samsung.com/ae/support</a> (English) <a href="http://www.samsung.com/ae_ar/support">www.samsung.com/ae_ar/support</a> (Arabic)
OMAN	800-SAM CS (800-72627)	
KUWAIT	183-CALL (183-2255)	
BAHRAIN	8000-GSAM (8000-4726)	
QATAR	800-CALL (800-2255)	
TURKEY	444 77 11	<a href="http://www.samsung.com/tr/support">www.samsung.com/tr/support</a>
JORDAN	0800-22273 06 5777444	<a href="http://www.samsung.com/levant/support">www.samsung.com/levant/support</a>
SYRIA	962 5777444	
LEBANON	1299	
IRAQ	80010080	
MOROCCO	080 100 22 55	<a href="http://www.samsung.com/n_africa/support">www.samsung.com/n_africa/support</a>

