

SAMSUNG LED TV user manual

Figures and illustrations in this User Manual are provided for reference only and may differ from actual product appearance. Product design and specifications may be changed without notice.

- Still image warning**
- Avoid displaying still images (like jpeg picture files) or still image element (like TV programme logo, panorama or 4:3 image format, stock or news bar at screen bottom etc.) on the screen. Constant displaying of still picture can cause ghosting of LED screen, which will affect image quality. To reduce risk of this effect, please follow below recommendations:
 - Avoid displaying the same TV channel for long periods.
 - Always try to display any image on full screen, use TV set picture format menu for best possible match.
 - Reduce brightness and contrast values to minimum required to achieve desired picture quality, exceeded values may speed up the burnout process.
 - Frequently use all TV features designed to reduce image retention and screen burnout, refer to proper user manual section for details.

For India Only
This product is RoHS compliant.

Correct Disposal of This Product
(Waste Electrical & Electronic Equipment)
This marking on the product & accessories literature indicates that the product and its electronic accessories (e.g. charger, headset, USB cable) should not be disposed of with other household waste at the end of their working life. To prevent possible harm to the environment or human health from uncontrolled waste disposal, please separate these items from other types of waste and recycle them responsibly to promote the sustainable reuse of material resources. House hold users should contact either the retailer where they purchased this product, or their local government office, for details of where and how they can take these items for environmentally safe recycling. Business user should contact their supplier and check the terms and conditions of the purchase contract. This product and its electronic accessories should not be mixed with other commercial wastes for disposal.

For more information on safe disposal and recycling visit our website www.samsung.com/in or contact our helpline number - 18002668282, 180030008282

For personal and non-commercial use only. Usage is subject to following the guidelines in the User Manual and may not be available in all regions.



Contact SAMSUNG WORLD WIDE
If you have any questions or comments relating to Samsung products, please contact the SAMSUNG customer care centre.

Country	Customer Care Centre	Web Site
VIETNAM	1800 588 889	www.samsung.com/vn/support
THAILAND	0-2689-3232	www.samsung.com/th/support
MYANMAR	1800-29-3232	www.samsung.com/my/support
MALAYSIA	1800-88-9999	www.samsung.com/my/support
PHILIPPINES	1-800-10-7267864 (PLDT) / 1-800-8-7267864 (Globe Landline and Mobile)	www.samsung.com/ph/support
INDIA	1800 3000 8282 - Toll Free / 1800 266 8282 - Toll Free / 02-4222111 (Other Landline)	www.samsung.com/in/support
BANGLADESH	9612300300	www.samsung.com/in/support
SRI LANKA	0064117540540 / 0094115900000	www.samsung.com/lk/support
EGYPT	08000-726786	www.samsung.com/eg/support
ALGERIA	021 36 11 00	www.samsung.com/dz/support
IRAN	021-8255	www.samsung.com/ir/support
SAUDI ARABIA	920021230	www.samsung.com/sa/support
PAKISTAN	0800-Samsung (72678)	www.samsung.com/pk/support
TUNISIA	80-1000-12	www.samsung.com/tn/support
U.A.E	800-SAMSUNG (800 - 726 7864)	www.samsung.com/ae/support
OMAN	800-SAMSUNG (800 - 726 7864)	www.samsung.com/om/support
KUWAIT	183-CALL (183-2255)	www.samsung.com/ku/support
BAHRAIN	8000-GSAM (8000-4726)	www.samsung.com/bh/support
QATAR	800-CALL (800-2455)	www.samsung.com/qa/support
JORDAN	0800-22273	www.samsung.com/jo/support
SYRIA	18252773	www.samsung.com/sy/support
MOROCCO	080 100 22 55	www.samsung.com/mo/support
SOUTH AFRICA	0800 SAMSUNG (726 7864)	www.samsung.com/za/support
BOTSWANA	8007260000	www.samsung.com/bs/support
NAMIBIA	08 197 287 864	www.samsung.com/na/support
ZAMBIA	0211 350370	www.samsung.com/zw/support
MOZAMBIQUE	847267864 / 827267864	www.samsung.com/mz/support
NIGERIA	0800-726-7864	www.samsung.com/ng/support
Ghana	0800-100777 / 0302-200077	www.samsung.com/gh/support
Cote D'Ivoire	8000 0077	www.samsung.com/ci/support
SENEGAL	800-00-0077	www.samsung.com/sn/support
CAMEROON	7095-0077	www.samsung.com/cm/support
KENYA	0800 545 545	www.samsung.com/ke/support
UGANDA	0800 300 300	www.samsung.com/ug/support
TANZANIA	0800 755 755	www.samsung.com/tz/support
RWANDA	9599	www.samsung.com/rw/support
BURUNDI	200	www.samsung.com/bi/support
DRC	499999	www.samsung.com/drc/support
SUDAN	1369	www.samsung.com/sd/support

Important Safety Instructions

Warning! Important Safety Instructions
(Please read the safety instructions below before installing and using the product.)

CAUTION
RISK OF ELECTRIC SHOCK DO NOT OPEN

CAUTION: TO REDUCE THE RISK OF ELECTRIC SHOCK, DO NOT REMOVE COVER (OR BACK). THERE ARE NO USER SERVICEABLE PARTS INSIDE. REFER ALL SERVICING TO QUALIFIED PERSONNEL.

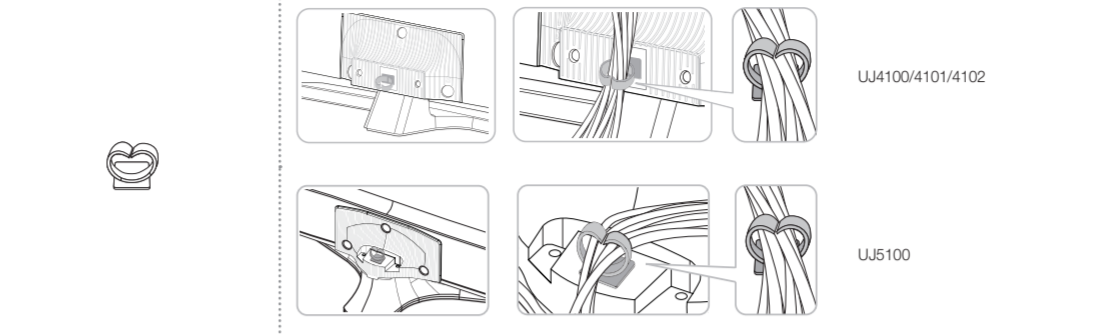
This symbol indicates that high voltage is present inside. It is dangerous to make any kind of contact with any internal part of this product.

This symbol alerts you that important literature concerning operation and maintenance has been included with this product.

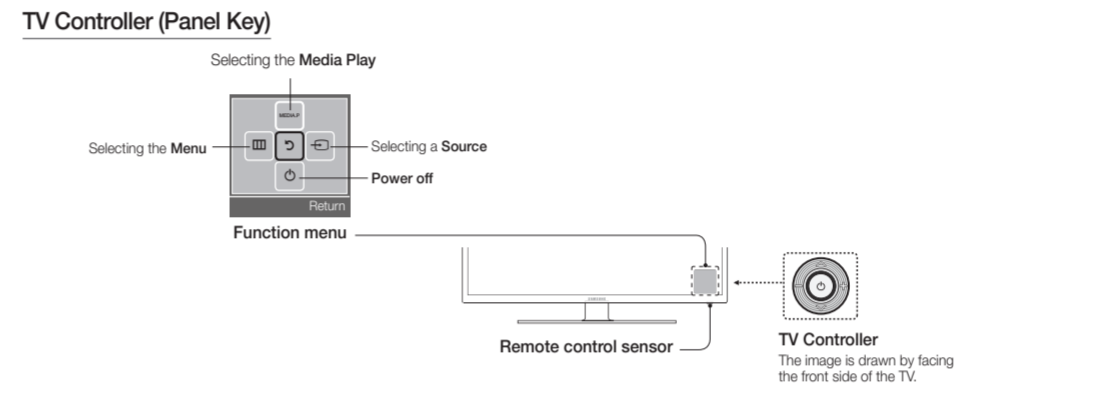
- The slots and openings in the cabinet and in the back or bottom are provided for necessary ventilation. To ensure reliable operation of this apparatus, and to protect it from overheating, these slots and openings must never be blocked or covered.
 - Do not cover the slots and openings with a cloth or other materials.
 - Do not block the slots and openings by placing this apparatus on a bed, sofa, rug or other similar surface.
 - Do not place this apparatus in a confined space, such as a bookcase or built-in cabinet, unless proper ventilation is provided.
- Do not place this apparatus near or over a radiator or heat register, or where it is exposed to direct sunlight.
- Do not place a vessel containing water (vases etc.) on this apparatus, as this can result in a risk of fire or electric shock.
- Do not expose this apparatus to rain or place it near water (near a bathtub, washbowl, kitchen sink, or laundry tub, in a wet basement, or near a swimming pool etc.). If this apparatus accidentally gets wet, unplug it and contact an authorised dealer immediately.
- Make sure to pull out the power cord from the outlet before cleaning.
- This apparatus uses batteries. In your country, there might be regulations that require you to dispose of these batteries properly to protect the environment. Please contact your local authorities for disposal or recycling information.
- Do not overload wall outlets, extension cords, or adaptors beyond their capacity, as this can result in fire or electric shock.
- Power-supply cords should be routed so that they are not likely to be walked on or pinched by items placed upon or against them. Pay particular attention to cords at the plug end, where connected to adaptors, and at the point where they exit from the apparatus.
- To protect this apparatus from a lightning storm, or when it is left unattended and unused for long periods of time, unplug it from the wall outlet and disconnect the antenna or cable system. This will prevent damage to the set due to lightning and power line surges.
- Before connecting the AC power cord to the DC adaptor outlet, make sure the voltage designation of the DC adaptor corresponds to the local electrical supply, (depending on the model).
- Never insert anything metallic into the open parts of this apparatus. Doing so may create a danger of electric shock.
- To avoid electric shock, never touch the inside of this apparatus. Only a qualified technician should open this apparatus.
- Make sure to plug the power cord in until it is firmly inserted. Pull on the plug, not the cord, when removing the power cord from the outlet. Do not touch the power cord with wet hands.
- If this apparatus does not operate normally - in particular, if there are any unusual sounds or smells coming from it - unplug it immediately and contact an authorised dealer or service centre.
- Be sure to pull the power plug out of the outlet if the TV is to remain unused or if you are to leave the house for an extended period of time (especially when children, elderly or disabled people will be left alone in the house).
 - Accumulated dust can cause an electric shock, an electric leakage, or a fire by causing the power cord to generate sparks and heat, or cause the insulation to deteriorate.
- Be sure to contact an authorised service centre, when installing your set in a location with heavy dust, high or low temperatures, high humidity, chemical substances or where it will operate for 24 hours a day such as in an airport, a train station, etc. Failure to do so may cause serious damage to your set.
- Use only a properly grounded plug and receptacle.
 - An improper ground may cause electric shock or equipment damage. (Class I Equipment only.)
- To turn off the apparatus completely, you must pull the power plug out of the wall socket. Consequently, the power plug should be readily accessible at all times.
- Do not allow children to hang onto the product.
- Store the accessories (batteries, etc.) in a location safely out of the reach of children.
- Do not install the product in an unstable location such as a shaky shelf, a slanted floor, or a location exposed to vibration.
- Do not drop or impart a shock to the product. If the product is damaged, disconnect the power cord and contact a service centre.
- To clean the product, unplug the power cord from the power outlet and wipe the product using a soft, dry cloth. Do not use any chemicals such as wax, benzene, alcohol, thinners, insecticide, air freshener, lubricant or detergent. This may damage the appearance or erase the printing on the product.
- Do not expose the apparatus to dripping or splashing.
- Do not dispose of batteries in a fire.
- Do not short circuit, disassemble, or overheat the batteries.
- There is a danger of explosion if you replace the batteries with the wrong type of battery. Replace only with the same or equivalent type.
- WARNING - TO PREVENT THE SPREAD OF FIRE, KEEP CANDLES OR OTHER OPEN FLAMES AWAY FROM THIS PRODUCT AT ALL TIMES.**

Getting Started

- Accessories**
- Remote Control & Batteries (AAA x 2)
 - Owner's Instructions
 - Warranty Card / Regulatory Guide (Not available in some locations)
 - Power Cord
- Only for UJ4100/4101/4102:
- Bracket-Wall
 - Wall-Mount Kit
 - Spacer-Felt
 - Wall-Mount Quick setup guide
 - Screw Setting Guide



- Input Cables (Sold Separately)**
- Composite (AV)
 - Coaxial (RF)
 - HDMI-DVI
 - Component
 - HDMI

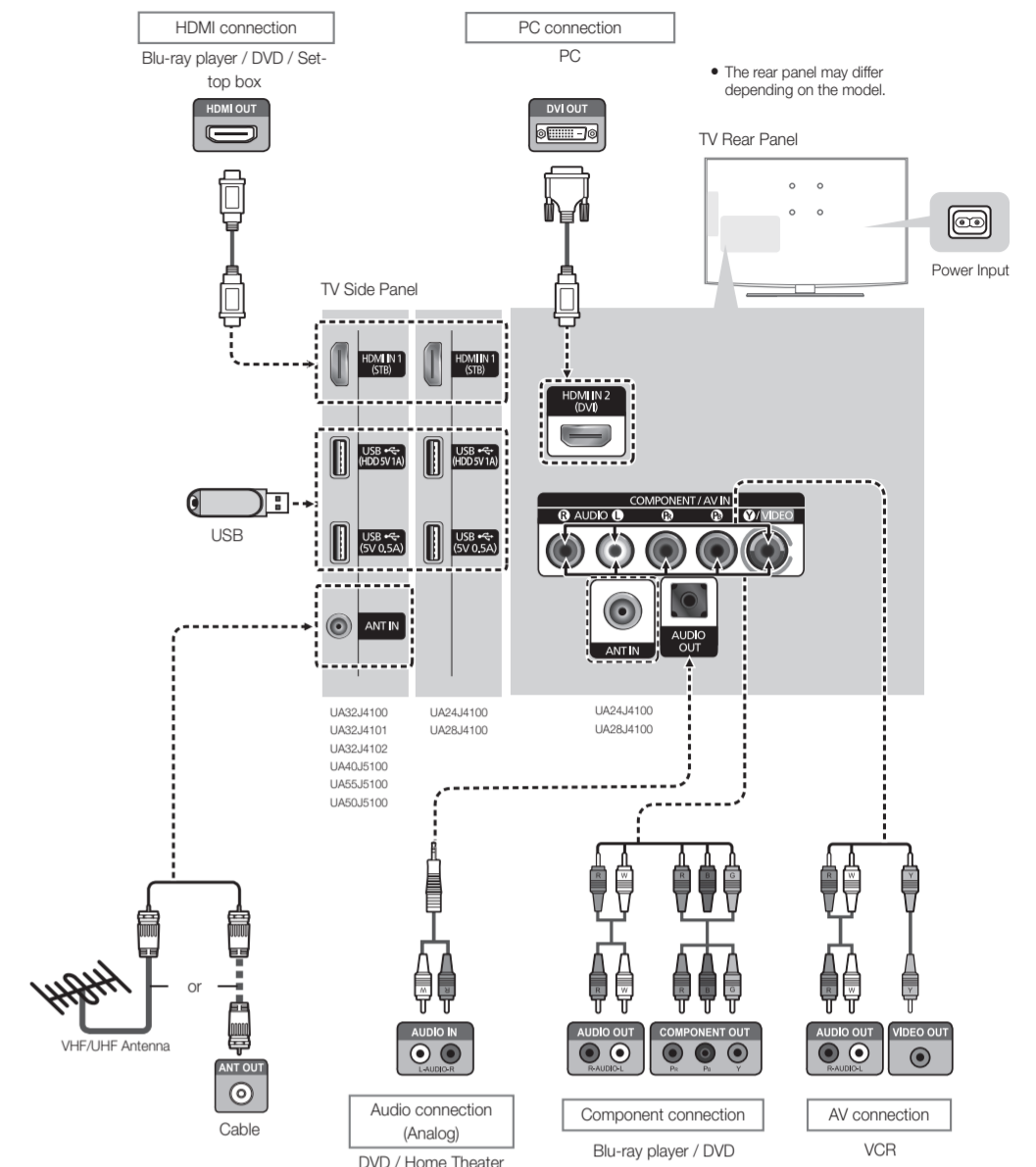


- To close the **Menu**, **Media Play** List, or **Source** List, press the Controller for more than 1 second.
- When selecting the function by moving the controller to the up/down/left/right directions, be sure not to press the controller. If you press it first, you cannot operate it to move the up/down/left/right directions.

- Plug & Play (Initial Setup)**
- When you turn the TV on for the first time, a sequence of screens and on-screen prompts will assist you in configuring the TV's basic settings. Plug the power cord into a wall outlet, and then press the POWER button to turn on the TV. Set the initial setup following instructions that the TV guides.
- If you are not using a cable box or satellite box, make you have connected the TV to an Aerial or cable connection before you turn on the TV.
 - Connecting the power cord and antenna. (refer to 'Connections')

Connections

- For better picture and audio quality, connect to a digital device using an HDMI cable.
- The picture may not display normally (if at all) or the audio may not work if an external device that uses an older version of HDMI mode is connected to the TV. If such a problem occurs, ask the manufacturer of the external device about the HDMI version and, if not of date, request an upgrade.
- Be sure to purchase a certified HDMI cable. Otherwise, the picture may not display or a connection error may occur.
- PC / DVI AUDIO IN input is not supported.
- For HDMI/DVI cable connection, you must use the HDMI IN 2 (DVI) port.
- Connecting through the HDMI cable may not be supported depending on the PC.
- If an HDMI to DVI cable is connected to the HDMI IN 2 (DVI) port, the audio does not work.
- For Set-top box connection using HDMI cable, we highly recommend you to connect the HDMI IN 1 (STB) port.
- The rear panel may differ depending on the model.



Changing the Input Source

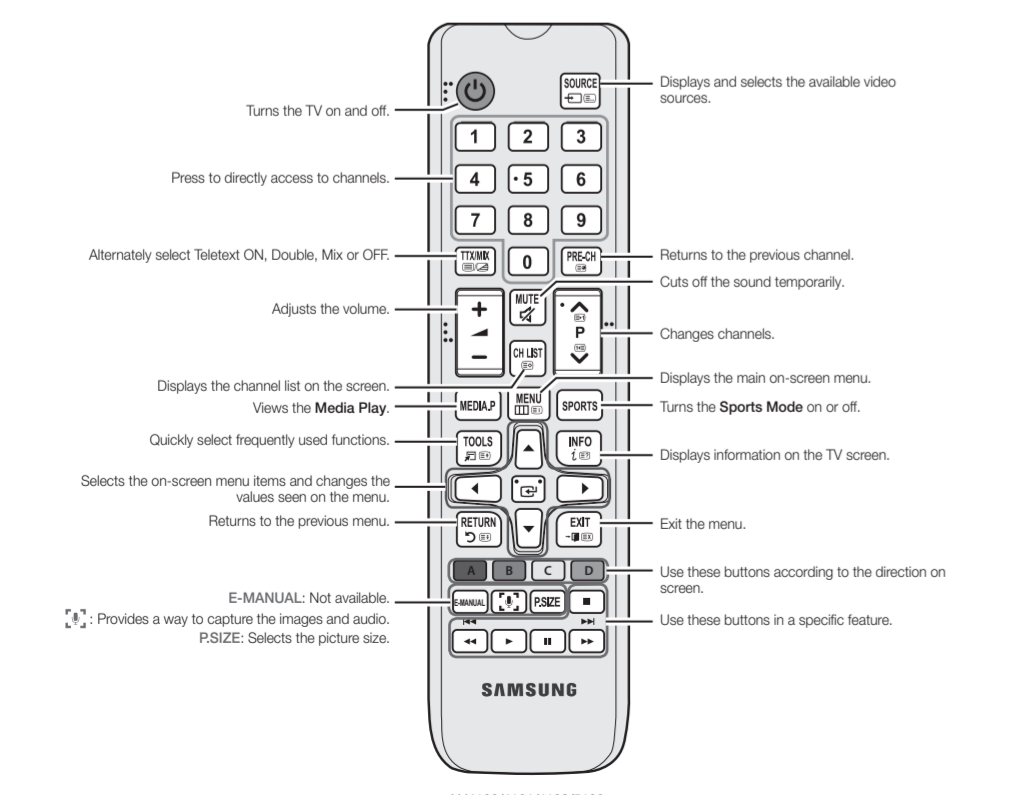
- Source List**
- Use to select TV or other external input sources such as DVD / Blu-ray players / cable box / STB satellite receiver connected to the TV.
- Press the SOURCE button.
 - Select a desired external input source.
- **TV / AV / Component / HDMI1 / HDMI2/DVI**
- You can only choose external devices that are connected to the TV. In the Source List, connected inputs will be highlighted.

How to use Edit Name

- Edit Name** lets you associate a device name to an input source. To access **Edit Name**, enter **Support** menu and select **Edit Name**. Name the device connected to the input jacks to make your input source selection easier.
- When connecting a PC to the HDMI IN 2 (DVI) port with HDMI cable, you should set the TV to PC mode under **Edit Name**.
 - When connecting a PC to the HDMI IN 2 (DVI) port with HDMI to DVI cable, you should set the TV to DVI PC mode under **Edit Name**.
 - When connecting an AV devices to the HDMI IN 2 (DVI) port with HDMI to DVI cable, you should set the TV to DVI mode under **Edit Name**.

Remote Control

This remote control has Braille points on the Power, Channel, and Volume buttons and can be used by visually-impaired persons.



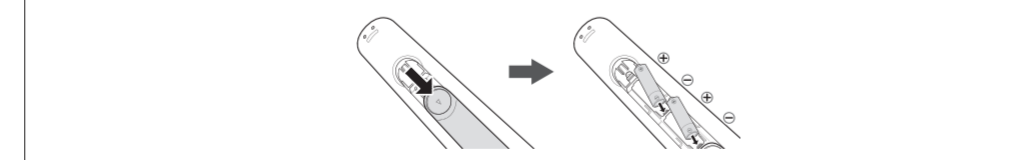
UJ4100/4101/4102/5100

Display Modes (HDMI/DVI Input)

Optimal resolution
4 series: 1366 x 768@60Hz, 1600 x 900@60Hz / 5 series: 1920 x 1080@60Hz

Mode	Resolution	Horizontal Frequency (kHz)	Vertical Frequency (Hz)	Pixel Clock Frequency (MHz)	Sync Polarity (H / V)	1366 x 768	1920 x 1080	
IBM	720 x 480	31.469	70.087	28.322	-/+	✓	✓	
	640 x 480	35.000	60.667	30.240	-/-	✓	✓	
	MAC	852 x 624	49.726	74.581	57.284	-/-	✓	✓
		1152 x 870	68.681	75.062	100.000	-/-	✓	✓
	640 x 480	31.469	59.940	25.175	-/-	✓	✓	
	640 x 480	37.861	72.809	31.500	-/-	✓	✓	
	640 x 480	37.500	75.000	31.500	-/-	✓	✓	
	800 x 600	37.879	60.317	40.000	+/+	✓	✓	
	800 x 600	48.077	72.188	50.000	-/-	✓	✓	
	800 x 600	46.875	75.000	49.500	+/+	✓	✓	
	1024 x 768	48.363	60.004	65.000	-/-	✓	✓	
	1024 x 768	56.476	70.099	75.000	-/-	✓	✓	
1024 x 768	60.023	75.029	76.750	+/+	✓	✓		
VESA DMT	1152 x 864	67.500	75.000	108.000	-/-	✓	✓	
	1280 x 720	45.000	60.000	74.250	+/-	✓	✓	
	1280 x 800	49.702	59.810	85.500	-/-	✓	✓	
	1280 x 1024	63.981	60.020	108.000	+/-	✓	✓	
	1280 x 1024	79.876	75.025	135.000	-/-	✓	✓	
	1368 x 768	47.712	59.790	85.500	-/-	✓	✓	
	1440 x 900	55.805	59.887	108.000	+/-	✓	✓	
	1600 x 900@B	60.000	60.000	108.000	+/-	✓	✓	
	1680 x 1050	65.290	59.954	146.250	+/-	✓	✓	
	1920 x 1080	67.500	60.000	148.500	+/-	✓	✓	

Installing batteries (Battery size: AAA)



- NOTE**
- Use the remote control within 7 m from TV.
 - Bright light may affect the performance of the remote control. Avoid using nearby special fluorescent light or neon signs.
 - The Colour and shape may vary depending on the model.

Channel Menu

- **Seeing Channels**
- Channel List**
- Select a channel in the **All Channels**, **Added Channels** screen by pressing the **▲** buttons, and pressing the ENTER/CF button. Then you can watch the selected channel.
- ☞ Use the remote control buttons with the **Channel List**

Channel Status Display icons

Icons	Operations
	A channel deleted.

Retuning Channels

Area

You can change the desired area.

Auto Store

(Depending on the country)
Scan mode for Southwest Asia: Full/Turbo
Scans for a channel automatically and stores in the TV.

Manual Store

Scans for a channel manually and stores in the TV.

- According to channel source, **Manual Store** may be supported.
- Programme**, **Colour System**, **Sound System**, **Channel Search**, **Store**: If there is abnormal sound or no sound, select the sound standard required.

Channel List Option Menu

Set each channel using the **Channel List** menu options (**Add / Delete**). Option menu items may differ depending on the channel status.

Set each channel using the **Channel List** menu options. Option menu items may differ depending on the channel status.

- Add / Delete**: Delete or add a channel to display the channels you want.
- All deleted channels will be shown on the **All Channels** menu.
- A "X" beside the channel indicates the channel has been deleted.
- The Add menu only appears for deleted channels.

Fine Tune

- If the reception is clear, you do not have to fine tune the channel, as this is done automatically during the search and store operation. If the signal is weak or distorted, fine tune the channel manually.
- Fine tuned channels that have been saved are marked with an asterisk "*" on the right-hand side of the channel number in the channel banner.
- This is available for analogue broadcasts only.
- Available only in **HDMI** mode (RGB signals).
- A "X" beside the channel indicates the channel has been deleted.
- The Add menu only appears for deleted channels.

- Picture Menu**
- Picture Mode** **TOOLS** **F2**
- Select your preferred picture type.
- Dynamic**: Suitable for a bright room.
 - Standard**: Suitable for a normal environment.
 - Movie**: Suitable for watching movies in a dark room.
- Backlight / Contrast / Brightness / Sharpness / Colour / Tint (G/R)**
- Your television has several setting options for picture quality control.
- In analogue TV, AV modes of the PAL system, the **Tint (G/R)** function is not available.
 - When connecting a PC, you can only make changes to **Backlight**, **Contrast**, **Brightness** and **Sharpness**.
 - Settings can be adjusted and stored for each external device connected to the TV.
 - Lowering picture brightness reduces power consumption.
- Picture Options**
- Colour Tone**: Select the colour temperature.
 - Warm** will be deactivated when the picture mode is **Dynamic**.
 - Size**: Your cable box/satellite receiver may have its own set of screen sizes as well. However, we highly recommend you use **16:9** mode most of the time.
 - 16:9**: Sets the picture to 16:9 wide mode.
 - 4:3**: Sets the picture to basic 4:3 mode.
 - Zoom1/Zoom2**: Zoom out 16:9 wide mode vertically to fit the screen size.
 - Screen Fit**: Displays the full image without any cut-off when HDMI(720p/1080i/1080p) signals are inputted.
 - Custom**: Magnifies or shrinks 16:9 pictures vertically and/or horizontally. A magnified or shrunk picture can be moved left, right, up, and down.
 - Do not watch in 4:3 format for a long time. Traces of borders displayed on the left, right and centre of the screen may cause image retention (screen burn) which are not covered by the warranty.
- NOTE**
- Depending on the input source, the picture size options may vary.
 - The available items may differ depending on the selected mode.
 - Settings can be adjusted and stored for each external device connected to an input on the TV.
- Digital Clean View (Auto / Off / Low / Medium / High)** If the broadcast signal received by your TV is weak, you can activate the **Digital Clean View** feature to reduce any static and ghosting that may appear on the screen.
- When the signal is weak, try other options until the best picture is displayed.
 - HDMI Black Level**: Selects the black level on the screen to adjust the screen depth.
 - Available only in **HDMI** mode (RGB signals).
 - Film Mode (Auto / Off)**: Sets the TV to automatically sense and process film signals from all sources and adjust the picture for optimum quality.
 - Available in TV mode, AV, COMPONENT (480i / 1080i) and HDMI (480i / 1080i).
 - Motion Lighting**: Reduce power consumption by brightness control adapted motion.
 - Only available in **Standard** mode.
 - Analogue Clean View**: Reduces diagonal noise in picture caused by the crosstalk of signals.
- Picture Reset**
- Resets your current picture mode to its default settings.

Sound Menu

- Sound Mode** **TOOLS** **F2**
- Standard**: Selects the normal sound mode.
 - MUSIC**: Emphasises music over voices.
 - Movie**: Provides the best sound for movies.
 - Clear Voice**: Emphasises voices over other sounds.
- Equalizer**
- (standard sound mode only)
- Balance**: Adjusts the balance between the right and left speaker.
 - 100Hz / 300Hz / 1kHz / 3kHz / 10kHz (Bandwidth Adjustment)**: Adjusts the level of specific bandwidth frequencies.
 - Reset**: Resets the **Equalizer** to its default settings.
- DTS TruSurround HD** **TOOLS** **F2**
- (standard sound mode only)
- This function provides a virtual 5.1 channel surround sound experience through a pair of speakers using HRTF (Head Related Transfer Function) technology.

Auto Volume

Because each broadcasting station has its own signal conditions, the volume may fluctuate each time channel is changed. This feature lets you automatically adjust the volume of the desired channel by lowering the sound output when the modulation signal is high or by raising the sound output when the modulation signal is low.

Speaker Select

A sound echo may occur due to a difference in decoding speed between the main speaker and the audio receiver. In this case, set the TV to **External Speaker**.

- When you set **Speaker Select** to **External Speaker**, the TV's speakers are turned off. You will hear sound through the external speakers only. When you set **Speaker Select** to **TV Speaker**, both the TV's speakers and the external speakers are on. You will hear sound through both.
- When **Speaker Select** is set to **External Speaker**, the volume and MUTE buttons will not operate and the sound settings will be limited.
- If there is no video signal, both speakers will be mute.

Auto Power Off

The TV will be automatically turned off when no user operation is received for a hours.

Support Menu

Using the Media Play
Enjoy photos, music and/or movie files saved on a USB Mass Storage Class (MSC) device.

Connecting a USB Device

- Turn on your TV.
- Connect a USB device containing photo, music and/or movie files to the USB jack on the side of the TV.
- When USB is connected to the TV, you can select **Media Play**.

The maximum displayed number of partition is 4.

Using the Media Play Menu

- Press the MENU button. Press the ▲ or ▼ button to select **Support**, then press the ENTER button.
- Press the ▲ or ▼ button to select **Media Play (USB)**, then press the ENTER button.
- Press the ◀ or ▶ button to select an icon (**Videos**, **Music**, **Photos**, **Story Replay**), then press the ENTER button.

It might not work properly with unlicensed multimedia files.

If you want to view detailed information of the file being played, press TOOLS button in the file list, and then select **Information**.

Need-to-Know List before using **Media Play (USB)**

- Supported file systems are FAT and NTFS.
- Certain types of USB Digital camera and audio devices may not be compatible with this TV.
- Media Play** only supports USB Mass Storage Class (MSC) devices. MSC is a Mass Storage Class Bulk-Only Transport device. Examples of MSC are Thumb drives and Flash Card Readers. Devices should be connected directly to the TV's USB port.(LED 4100, 5100 series : USB HDD is not supported.) Does not support smart devices connected in MTP or PTP protocol.

- Before connecting your device to the TV, please back up your files to prevent them from damage or loss of data. SAMSUNG is not responsible for any data file damage or data loss.

- A USB device that requires high power may not be supported. (LED 4100, 5100 series and above: 1A)
- Do not disconnect the USB device while it is loading.
- The higher the resolution of the image, the longer it takes to display on the screen.

- The maximum supported JPEG resolution is 15360 x 8640 pixels.
- If a file is computed or the TV does not support the file type, the "Not Supported File Format" message appears.

- If a USB extension cable is used, the USB device may not be recognised or the files on the device may not be read.

- The TV cannot play MP3 files with DRM that have been downloaded from a for-pay site. Digital Rights Management (DRM) is a technology that supports the creation, distribution, and management of digital content in an integrated and comprehensive way, including protecting the rights and interests of content providers, preventing illegal copying of contents, and managing billings and settlements.

- PTP device is not supported.
- If an over-power warning message is displayed while you are connecting or using a USB device, the device may not be recognised or may malfunction.

- The power-saving mode of some external hard disk drives may be released automatically when you connect them to the TV.

- If a USB device connected to the TV is not recognised, the list of files on the device is computed, or a file in the list is not played, connect the USB device to a PC, format the device, and check the connection.

- If a file you deleted from the PC is still found when you run **Media Play**, use the "Empty the Recycle Bin" function on the PC to permanently delete the file.

- Photos** only supports sequential jpeg format.

- The scene search and thumbnail functions are not supported in the **Videos**.

- If the number of files and folders saved on a USB storage device is approximately over 4000, the files and folders may not appear and some folders may not be opened.

- The maximum displayed number of files, including sub folders, in one folder of USB storage device is 1000.
- The media may not be playing smoothly when using the device higher than USB 2.0.

The maximum displayed number of partition is 4.

- The file name only works in supported menu language. The other language is not displayed properly.

Videos

- Press the ◀ or ▶ button to select **Videos**, then press the ENTER button in the **Media Play** menu.

- Press the ◀|▶/▲|▼ buttons to select the desired video in the file list.
- Press the ENTER button or ▶ (Play) button.

- The selected file is displayed on the top with its playing time.

- If video time information is unknown, playing time and the progress bar are not displayed.

- During video playback, you can search using the ◀ and ▶ button.

- You can use (◀) (REW) and (▶) (FF) buttons during playback.

In this mode, you can play movie clips contained in a game, but you cannot play the game itself.

Supported Subtitle Formats

- External

Name	Container	File extension
MPEG-4 timed text		.txt
SAMI	MKV	.srt
Subrip		.srt
SubVaver		.sub
Micro DVD		.sub or .txt
SubStation Alpha		.ssa
Advanced SubStation Alpha		.ass

- Internal

Name	Container	Format
Ysub	AVI	Picture Format
SubStation Alpha	MKV	Text Format
Advanced SubStation Alpha	MKV	Text Format
Subrip	MKV	Text Format
MPEG-4 Timed text	MP4	Text Format

Supported Video Formats

File Extension	Container	Video Codec	Resolution	Frame Rate(Hz)	Bit rate(Mbps)	Audio Codec
*.m2p	MP4	DxW 3.11x 1.25, x8.0	1024x1080	6-30	20Mbps	MP3 / AAC / AAC
		H.264	1024x1080	6-30	20Mbps	
		VC1	1024x1080	6-30	20Mbps	
		MPEG2	1040x480	6-30	10Mbps	
		DxW 3.11x 1.25, x8.0	1024x1080	6-30	20Mbps	MP3 / AC3 / LPCM / ADPCM / DTS
*.m1	AVI	MPEG 1/2/4	1024x1080	6-30	20Mbps	
		H.264	1024x1080	6-30	20Mbps	
		MPEG2	1040x480	6-30	10Mbps	
*.m2	ASF	DxW 3.11x 1.25, x8.0	1024x1080	6-30	20Mbps	MP3 / AC3 / LPCM / ADPCM / WMA / WMA Pro
		MPEG 1/2/4	1024x1080	6-30	20Mbps	
		H.264	1024x1080	6-30	20Mbps	
*.ts	TS	MPEG2-TS	1024x1080	6-30	20Mbps	AC3 / AAC / MP3 / DD+
*.ts		H.264	1024x1080	6-30	20Mbps	
*.m1		MPEG1	1024x1080	6-30	20Mbps	
*.m2	PS	MPEG2	1024x1080	6-30	20Mbps	AC3 / MPEG / LPCM / AAC
*.m3		H.264	1024x1080	6-30	20Mbps	
*.m4		MPEG 1/2/4	1024x1080	6-30	20Mbps	MP3
*.m4p	3GPP	H.264	1024x1080	6-30	20Mbps	
*.m4v		H.264	1024x1080	6-30	20Mbps	
*.m	heh format	ScreenView H.263	1024x1080	6-30	20Mbps	MP3

Other Restrictions

- Video content will not play, or not play correctly, if there is an error in the content or the container.

- Sound or video may not work if the contents have a standard bit rate/frame rate above the compatible Frame/sec listed in the table above.

- If the Index Table is in error, the Seek (Jump) function is not supported.
- The menu may take longer to appear if the video's bit rate exceeds 10Mbps.

- Video content can not be played, if there are many contents in one file.

Video Decoder
Supports up to H.264, Level 4.1
H.264 FMO / ASO / RS, VC1 SP / MP / AP L4 and AVCHD are not supported.
MPEG4 SP, ASP
- Below 1280 x 720 : 60 frame max
- Above 1280 x 720 : 30 frame max
H.263 is not supported.
GMC is not supported.
Audio Decoder
Supports up to WMA7, 8, 9 STD, 9 PRO, 10 PRO
WMA 9 PRO and WMA 10 PRO support 5.1 channel. (LBR mode of WMA Pro is not supported)
WMA Lossless is not supported.

MUSIC

- Press the ◀ or ▶ button to select **Music**, then press the ENTER button in the **Media Play** menu.

- Press the ◀|▶/▲|▼ buttons to select the desired Music in the file list.
- Press the ENTER button or ▶ (Play) button.

During music playback, you can search using the ◀ and ▶ button.

- (◀) (REW) and (▶) (FF) buttons do not function during play.

Only displays the files with MP3 file extension. Other file extensions are not displayed, even if they are saved on the same USB device.

If the need to change **Equalizer** - when playing MP3, then exit **Media Play**, adjust the **Equalizer** in the **Sound** menu. (An over-modulated MP3 file may cause a sound problem.)

Photos

- Press the ◀ or ▶ button to select **Photos**, then press the ENTER button in the **Media Play** menu.

- Press the ◀|▶/▲|▼ buttons to select the desired photo in the file list.
- Press the ENTER button or ▶ (Play) button.

NOTE

- While a photo list is displayed, press the ▶ (Play) / ENTER button on the remote control to start the slide show.

- All files in the file list section will be displayed in the slide show.

- During the slide show, files are displayed in order.

During the slide show, you can adjust the slide show speed using (◀) (REW) or (▶) (FF) button.

- You can move to other file using ◀ or ▶ button.

- Press TOOLS button and select **Background Music**. Music files can be automatically played during the Slide Show if the **Background Music** is set to On.

The **Mode** in **Background Music** cannot be changed until the BGM has finished loading.

Supported Photo Formats

Image	Photo	Resolution
JPEG	Basic line	15360 x 8704
	Progressive	1024 x 768

Other Restrictions

CMYK, Y'CKC Colour space JPEG are not supported.

Playing Multiple Files

Playing selected video/music/photo files

- Press the Yellow button in the file list to select the desired file.
- Repeat the above operation to select multiple files.

NOTE

- The ✓ mark appears to the left of the selected files.
- To cancel a selection, press the Yellow button again.
- To deselect all selected files, press the TOOLS button and select **Deselect All**.

Playing the video/music/photo file group

While a file list is displayed, move to any file in desired group.

Copying the files to the other USB device For 4100 /4101/ 4102/ 5100 models

- Press the button in the file list to select the desired file.
- When you press the button, the selected files copy to the other USB device.

- Available only when both USB devices are connected to the TV.
- The FAT32 file system cannot copy the file which size is more than 4GB.
- Copy is only available for 4100/4101/4102/5100 models.
- The maximum number of marked files for one folder is 999. If to be continued, 1 more files can be marked in another folder.

USB	Support File System
Play (Read)	NTFS, FAT, FAT32
Copy & Capture	FAT, FAT32
Delete	NTFS,FAT,FAT32
Format	NTFS,FAT,FAT32

All file system format will be transformed to FAT32 system after formatting.

Media Play - Additional Functions

Videos/Music/Photos Play Option menus
When playing a file, press the TOOLS button.

Category	Operation	Videos	Music	Photos
Title	You can move the other file directly.			
Repeat Mode	You can play movie and music files repeatedly.	✓	✓	
Picture Size	You can adjust the picture size to your preference.	✓		
Picture Mode	You can adjust the picture setting.	✓	✓	✓
Sound Mode	You can adjust the sound setting.	✓	✓	
Subtitle Settings	You can play the video with Subtitles. This function only works if the subtitles are the same file name as the video.	✓		
Audio language	You can change the audio language if the video has more than one language.	✓		
Stop Slide Show / Start Slide Show	You can start or stop a Slide Show.			✓
Slide Show Speed	You can select the slide show speed during the slide show.			✓
Background Music	You can set and select background music when watching the Slide Show.		✓	
Zoom	You can zoom into images in full screen mode.		✓	
Rotate	You can rotate images in full screen mode.		✓	
Information	You can see detailed information about the played file.	✓	✓	✓

Using the Sports Mode

Sports Mode **TOOLS**

This mode provides optimized condition for watching sports games.

A Zoom: Pause playback and dived the picture into 9 parts. Select a part to zoom it in. Press this button again to resume.

When **Sports Mode** is On, the picture and sound modes are set to **Stadium** automatically.

If you turn the TV off while watching **Sports Mode**, the **Sports Mode** will be disable.

Mode name may vary depending on nations. **Cricket Mode**, **Soccer Mode**, **Sports Mode**.

Game Mode

Game Mode (Off / On)When you have connected a game console such as PlayStation™ or Xbox™ to the TV, you can enjoy a more realistic gaming experience if you set **Game Mode** on.

- Precautions and limitations for **Game Mode**

- Before disconnecting a game console and connecting another external device, set **Game Mode** to Off.

- If you display the TV menu in **Game Mode**, the screen shakes slightly.

- Game Mode** is not available when you've set the input source to TV.

- Set **Game Mode** to On only after attaching a game console. If you turn Game Mode on before you have attached the game console, you may notice reduced picture quality.

- If **Game Mode** is On: **Picture Mode** is set to **Game Mode** and **Sound Mode** is set to **Game Mode**.

Sports Mode and **Game Mode** can not be used at the same time.

Using the Family TV Mode

Family TV Mode **+**

This mode provides a way to capture the images and audio.

Only available for U4100/4101/4102/5100.

Press **+** and the **Family TV Mode** mode will be turned on, or press MENU button, enter Support Menu select **Family TV Mode**. Press **+** again the **Family TV Mode** mode will be turned off.

Before enabling the **Family TV Mode** mode, the USB device should be connected first.

Media Play mode not available.



Screen Capture

After turning on the **Family TV Mode** mode, press button to make a current screen capture.

Items are stored in **Photos** folder in **Media Play**.

Storage and Maintenance

If you remove the attached sticker on the TV screen, clean the residues and then wash TV.

	Do not spray water directly onto the product. Any liquid that goes into the product may cause a failure, fire, or electric shock.		Clean the product with a soft cloth dampened with a small amount of water. Do not use a flammable liquid (e.g. benzene, thinner) or a cleaning agent.
---	---	---	---

Securing the Installation Space

Keep the required distances between the product and other objects (e.g. walls) to ensure proper ventilation.

Failing to do so may result in fire or a problem with the product due to an increase in the internal temperature of the product.

When using a stand or wall-mount, use parts provided by Samsung Electronics only.

- If you use parts provided by another manufacturer, it may result in a problem with the product or an injury due to the product falling.

The appearance may differ depending on the product.

Be careful when you contact the TV because some parts can be somewhat hot.

Installation with a stand.	Installation with a wall-mount.
	

Licence

DIVX® HD	DivX Certified® to play DivX® video up to HD 1080p, including premium content.
-----------------	--

This DivX Certified® device has passed rigorous testing to ensure it plays DivX® video.

To play purchased DivX movies, first register your device at vod.divx.com. Find your registration code in the DivX VOD section of your device setup menu.

DivX Certified® to play DivX® video up to HD 720p, including premium content.

DivX®, DivX Certified® and associated logos are trademarks of DivX, LLC and are used under license.

Covered by one or more of the following U.S. patents: 7,295,673; 7,460,668; 7,515,710; 7,519,274.

DOLBY DIGITAL PLUS	Manufactured under license from Dolby Laboratories. Dolby and the double-D symbol are trademarks of Dolby Laboratories.
---------------------------	---

ds 2.0 Channel	For DTS patents, see http://patents.dts.com. Manufactured under license from DTS Licensing Limited. DTS, the Symbol, & DTS and the Symbol together are registered trademarks, and DTS 2.0 Channel is a trademark of DTS, Inc. © DTS, Inc. All Rights Reserved.
-----------------------	--

dts Studio Sound	For DTS patents, see http://patents.dts.com. Manufactured under license from DTS Licensing Limited. DTS, the Symbol, DTS in combination with the Symbol, and DTS Studio Sound are registered trademarks or trademarks of DTS, Inc. in the United States and/or other countries. DTS, Inc. All Rights Reserved.
-------------------------	--

HDMI	The terms HDMI and HDMI High-Definition Multimedia Interface, and the HDMI Logo are trademarks or registered trademarks of HDMI Licensing LLC in the United States and other countries.
-------------	---

Open Source License Notice	
Open Source used in this product can be found on the following webpage. (http://opensource.samsung.com)	
Open Source License Notice is written only English.	

Recommendation - Jordan Only

CE

Herley, Samsung Electronics, declares that this equipment is in compliance with the essential requirements and other relevant provisions of Directive 1999/5/EC. The original Declaration of Conformity may be found at http://www.samsung.com, go to Support -> Search Product Support and enter the model name. This equipment may be operated in Jordan.

Other Information

Installing the Wall Mount

- Installing the Wall Mount kit with the GUIDE-STAND supplied by SAMSUNG. Please refer to the "Wall Mount Quick Setup Guide" (Only for U4100/4101/4102).

- Installing other Wall Mount Kits. Please refer as follow: