

SAMSUNG LED TV user manual

SERIES 45
SERIE
4000
5003

Figures and illustrations in this User Manual are provided for reference only and may differ from actual product appearance. Product design and specifications may be changed without notice.

Important Warranty Information Regarding Television Format Viewing

Wide screen format LED Displays with aspect ratios of 16:9 (the ratio of the screen width to screen height) are primarily designed to display wide screen format full-motion video. The images displayed on them should primarily be in the wide screen 16:9 ratio format, or expanded to fill the screen if your model offers this feature and the images are constantly moving. Displaying stationary graphics and images on screen, such as the dark sidebars on non-expanded standard format television video and programming, should be limited to no more than 5% of the total television viewing per week. Additionally, viewing other stationary images and text such as stock market crawls, video game displays, station logos, web sites or computer graphics and patterns, should be limited as described above for all televisions. Displaying stationary images that exceed the above guidelines can cause uneven aging of LED Displays that leave subtle, but permanent burned-in ghost images in the LED picture. To avoid this, vary the programming and images, and primarily display full screen moving images, not stationary patterns or dark bars. On LED models that offer picture sizing features, use these controls to view different formats as a full screen picture. Be careful in the selection and duration of television formats you use for viewing. Uneven LED aging as a result of format selection and use, as well as burned-in images, are not covered by your Samsung limited warranty.

SAMSUNG ELECTRONICS NORTH AMERICAN LIMITED WARRANTY STATEMENT

Subject to the requirements, conditions, exclusions and limitations of the original Limited Warranty supplied with Samsung Electronics (SAMSUNG) products, and the requirements, conditions, exclusions and limitations contained herein, SAMSUNG will additionally provide Warranty Repair Service in the United States on SAMSUNG products purchased in Canada, and in Canada on SAMSUNG products purchased in the United States, for the warranty period originally specified, and to the Original Purchaser only.

The above described warranty repairs must be performed by a SAMSUNG Authorized Service Center. Along with this Statement and the Original Limited Warranty Statement, a dated Bill of Sale as Proof of Purchase must be presented to the Service Center. Transportation to and from the Service Center is the responsibility of the purchaser. Conditions covered are limited only to manufacturing defects in material or workmanship, and only those encountered in normal use of the product. Exclusions include, but are not limited to, any originally specified provisions for in-home or on-site services, minimum or maximum repair times, exchanges or replacements, accessories, options, upgrades, or consumables.

For the location of a SAMSUNG Authorized Service Center, please call toll-free: - In the United States: 1-800-SAMSUNG (1-800-726-7864) - In Canada: 1-800-SAMSUNG

Still image warning

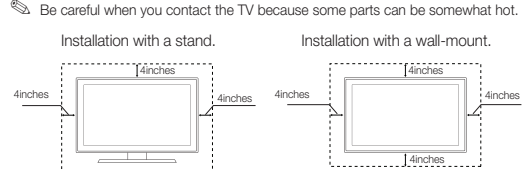
Avoid displaying still images (such as jpeg picture files) or still image elements (such as TV channel logos, panorama or 4:3 image format, stock or news bars at screen bottom etc.) on the screen. Constant displaying of still pictures can cause ghosting of LED screen, which will affect image quality. To reduce risk of this effect, please follow below recommendations:

- Avoid displaying the same TV channel for long periods.
- Always try to display any image on full screen, use TV set picture format menu for best possible match.
- Reduce brightness and contrast values to minimum required to achieve desired picture quality, exceeded values may speed up the burnout process.
- Frequently use all TV features designed to reduce image retention and screen burnout, refer to proper user manual section for details.

Securing the Installation Space

Keep the required distances between the product and other objects (e.g. walls) to ensure proper ventilation. Failing to do so may result in fire or a problem with the product due to an increase in the internal temperature of the product.

- When using a stand or wall-mount, use parts provided by Samsung Electronics only.
- If you use parts provided by another manufacturer, it may result in a problem with the product or an injury due to the product falling.
- The appearance may differ depending on the product.
- Be careful when you contact the TV because some parts can be somewhat hot.



Contact SAMSUNG WORLD WIDE		
If you have any questions or comments relating to Samsung products, please contact the SAMSUNG customer care center.		
Country	CANADA	U.S.A
Address	Samsung Electronics Canada Inc. 2050 Derry Road West, Mississauga, Ontario L5N 0B9 Canada	Samsung Electronics America, Inc. 85 Challenger Road, Ridgefield Park, NJ 07069
Customer Care Center	1-800-SAMSUNG (726-7864)	1-800-SAMSUNG (726-7864)
Web Site	www.samsung.com/ca/support (English) www.samsung.com/ca/TV/support (French)	www.samsung.com/us/support

Warning! Important Safety Instructions

Please read the safety instructions below before installing and using the product.

CAUTION

RISK OF ELECTRIC SHOCK. DO NOT OPEN.

CAUTION: TO REDUCE THE RISK OF ELECTRIC SHOCK, DO NOT REMOVE COVER (OR BACK). THERE ARE NO USER SERVICEABLE PARTS INSIDE. REFER ALL SERVICING TO QUALIFIED PERSONNEL.

This symbol indicates that high voltage is present inside. It is dangerous to make any kind of contact with any internal part of this product.

This symbol indicates that important literature concerning operation and maintenance has been included with this product.

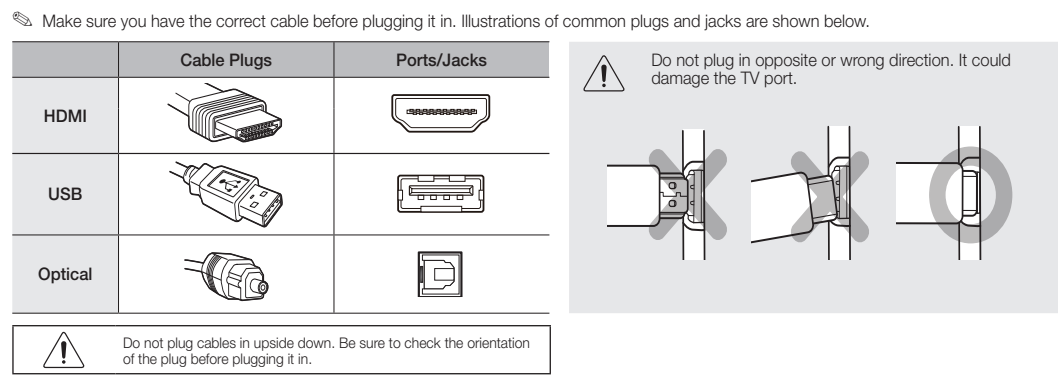
Getting Started

Accessories

- Remote Control & Batteries (AAA x 2)
- Warranty Card / Regulatory Guide
- Owner's Instructions
- Power Cord
- Wall Mount Adapter (4EA)
- AC/DC Adapter

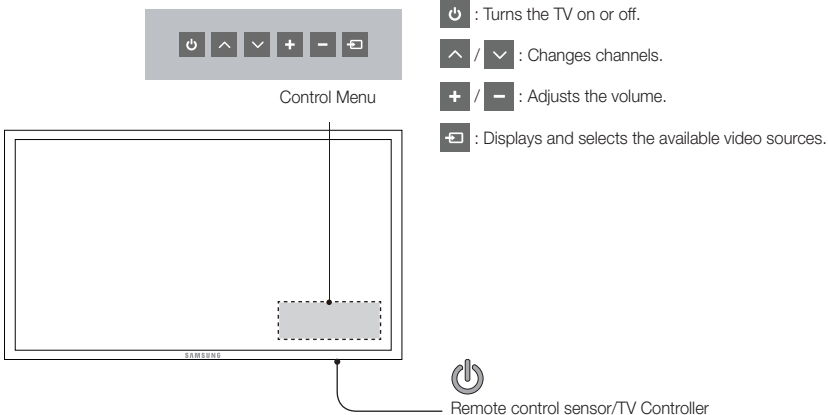
Input Cables (Sold Separately)

- Audio
- Composite (AV)
- Component
- Coaxial (RF)
- HDMI
- HDMI-DVI



TV Controller

The TV's Controller on the bottom right side of the TV, lets you control the TV without the remote control.



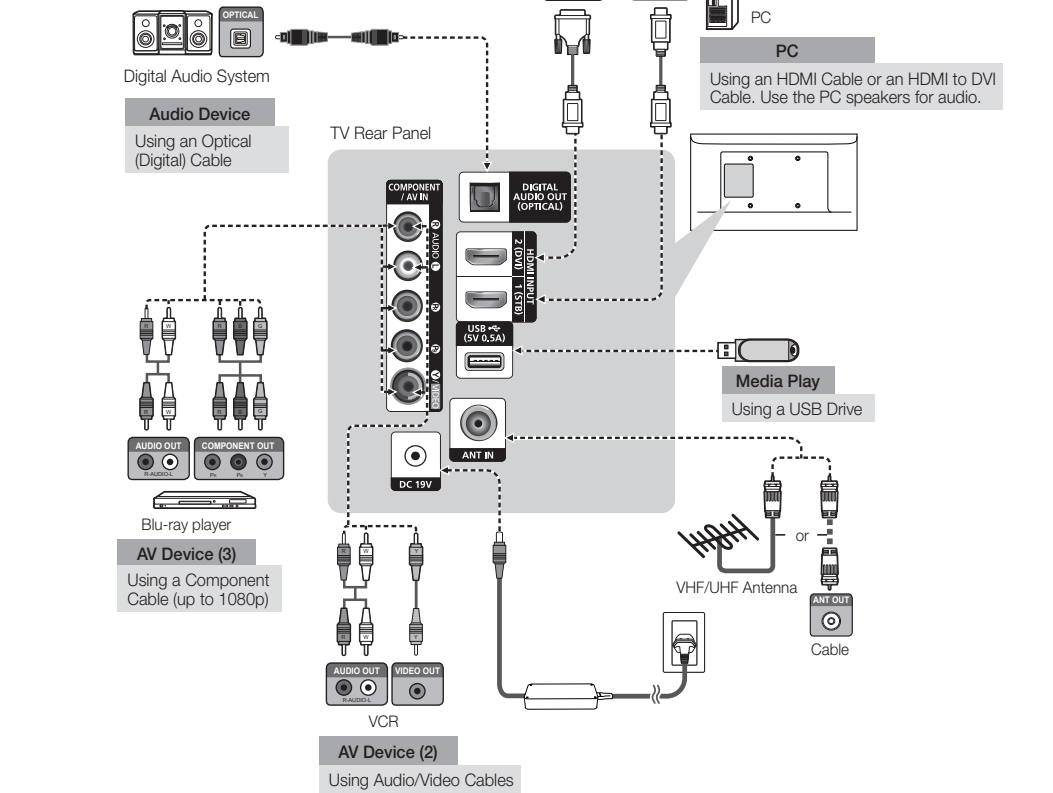
The product color and shape may vary depending on the model. You cannot input the numbers by pressing the TV's controller. If you press it first, the control menu appears. You can select the function by pressing and holding the TV's controller. With the TV's Controller, you cannot perform other operations except for turning the TV on or off, changing the channel, adjusting the volume, and switching the input source.

Plug & Play (Initial Setup)

When you turn the TV on for the first time, a sequence of screens and on-screen prompts will assist you in configuring the TV's basic settings. Press the POWER button. Plug & Play is available only when the input source is set to TV. Set the initial setup following instructions that the TV guides. Connecting the power cord and antenna. (refer to 'Connections')

Connections

- For the best picture and audio quality, connect digital devices using an HDMI cable.
- If you connect an external device to the TV that uses an older version of HDMI, the video and audio may not work. If this occurs, ask the manufacturer of the device about the HDMI version and, if it is out of date, request an upgrade.
- Be sure to purchase a certified HDMI cable. Otherwise, the picture may not display or a connection error may occur.
- PC/DVI AUDIO IN input is not supported.
- For an HDMI to DVI cable connection, you must use the HDMI IN 2 (DVI) port.
- Connecting through the HDMI cable may not be supported depending on the TV.
- If an HDMI to DVI cable is connected to the HDMI IN 2 (DVI) port, the audio does not work.
- For Set-top box connection using HDMI cable, we highly recommend you to connect the HDMI IN 1 (STB) port.



Changing the Input Source

Source List

To select TV or an external input source such as a DVD player / Blu-ray player / cable box / STB satellite receiver. Press the SOURCE button.

- Press the SOURCE button.
- Select a desired external input source.
- TV / AV / Component / HDMI1 / HDMI2/DVI

You can only choose external devices that are connected to the TV. In the Source List, connected inputs will be highlighted.

How to use Edit i-Name

Edit Name lets you associate a device name to an input source. To access Edit Name, press the TOOLS button in Source List. Name the device connected to the input jacks to make your input source selection easier.

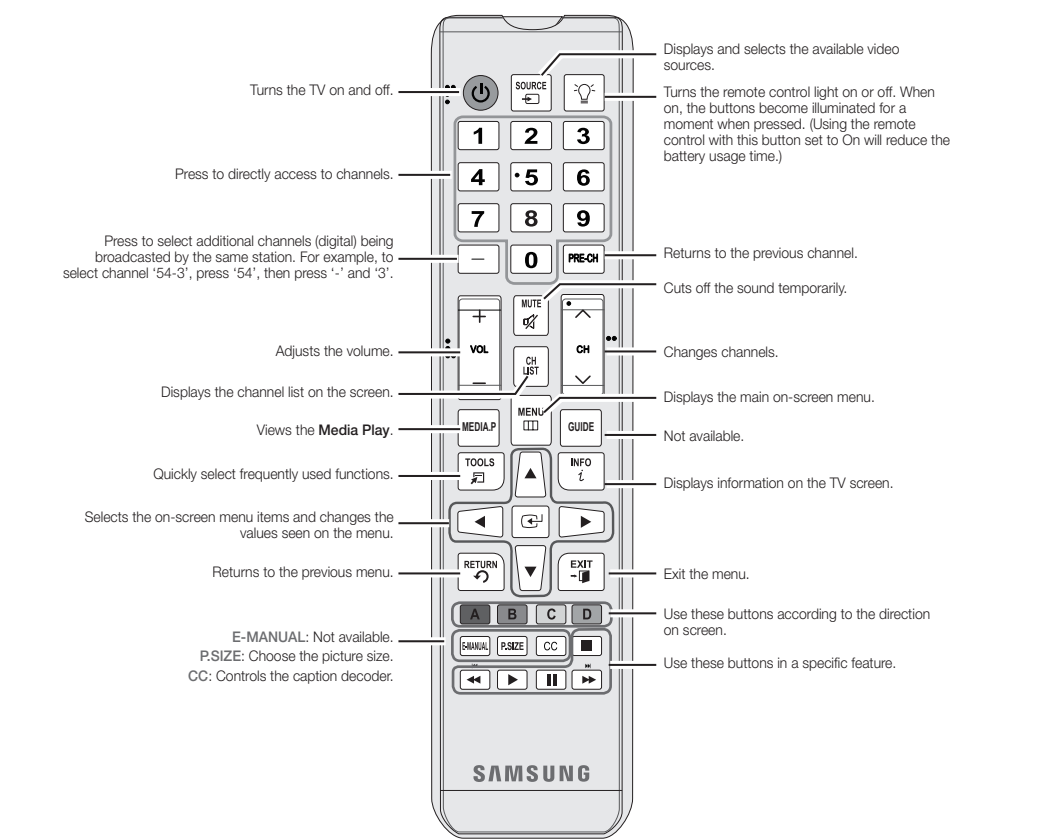
- When connecting a PC to the HDMI IN 2(DVI) port with HDMI to DVI cable, you should set the TV to PC mode under Edit Name.
- When connecting a PC to the HDMI IN 2(DVI) port with HDMI to DVI cable, you should set the TV to DVI PC mode under Edit Name.
- When connecting an AV devices to the HDMI IN 2(DVI) port with HDMI to DVI cable, you should set the TV to DVI mode under Edit Name.

Information

You can see detailed information about the connected external device.

Remote Control

This remote control has Braille points on the Power, Channel, and Volume buttons and can be used by visually impaired persons.



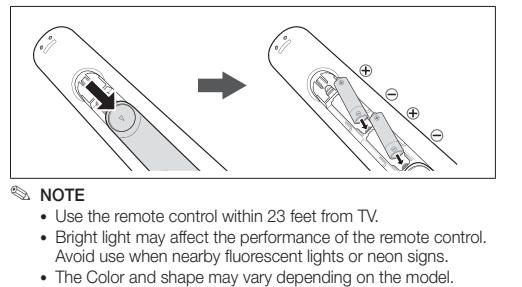
The button names above may differ from the actual names. Some buttons on the remote control may not be available. This remote control has Braille points on the Power, Channel, and Volume buttons and can be used by visually impaired persons.

Display Modes (HDMI/DVI Input)

Optimal resolution 4 series: 1366 x 768@60Hz / 5 series: 1920 x 1080@60Hz

Mode	Resolution	Horizontal Frequency (Hz)	Vertical Frequency (Hz)	Total Clock Frequency (MHz)	Pixel Polarity (L/R)	1366 x 768	1920 x 1080
RGB	640 x 350	31.469	70.088	25.175	-/+	✓	✓
	720 x 400	31.469	70.087	25.222	-/+	✓	✓
	640 x 480	31.000	66.667	31.343	-/+	✓	✓
	800 x 624	49.728	74.511	57.284	-/+	✓	✓
	1152 x 870	68.881	75.052	100.000	-/+	✓	✓
	640 x 480	31.469	59.940	25.175	-/+	✓	✓
	640 x 480	31.801	72.809	31.500	-/+	✓	✓
	640 x 480	31.500	75.000	31.900	-/+	✓	✓
	800 x 600	37.879	69.317	40.000	-/+	✓	✓
	800 x 600	37.877	72.188	50.000	-/+	✓	✓
	800 x 600	46.875	75.000	49.800	-/+	✓	✓
	1024 x 768	48.363	60.004	65.000	-/+	✓	✓
	1024 x 768	46.476	70.050	75.000	-/+	✓	✓
	1024 x 768	60.023	75.029	76.750	-/+	✓	✓
	1152 x 864	67.500	75.000	108.000	-/+	✓	✓
	1280 x 720	45.000	60.000	74.250	-/+	✓	✓
	1280 x 800	49.702	59.810	83.500	-/+	✓	✓
	1280 x 1024	63.981	60.020	108.000	-/+	✓	✓
	1280 x 1024	76.978	75.025	138.000	-/+	✓	✓
	1360 x 768	47.712	69.760	85.000	-/+	✓	✓
	1440 x 900	55.935	59.887	106.000	-/+	✓	✓
	1600 x 900FHS	60.000	60.000	108.000	-/+	✓	✓
	1680 x 1050	69.226	59.854	146.250	-/+	✓	✓
	1680 x 1080	67.500	60.000	148.500	-/+	✓	✓

Installing batteries (Battery size: AAA)



Channel Menu

Seeing Channels

Channel List Add, delete or set Favorite channels and use the program guide for digital broadcasts. Select a channel in the All Channels, Added Channels, Favorite or Programmed screen by pressing the ▲/▼ buttons, and pressing the ENTER button. Then you can watch the selected channel.

- All Channels: Shows all currently available channels.
 - Added Channels: Shows all added channels.
 - Favorite: Shows all favorite channels.
 - Programmed: Shows all currently reserved programs.
- Using the remote control buttons with the Channel List
- Green (Zoom): Enlarges or shrinks a channel number.
 - Yellow (Select): Selects multiple channel lists. Select desired channels and press the Yellow button to set all the selected channels at the same time. The ✓ mark appears to the left of the selected channels.
 - Tools: (Tools) Displays the Channel List option menu. (The Options menu may differ depending on the situation.)

Channel Status Display icons

- Channel selected.
- Channel set as a Favorite.
- A reserved program.
- A program currently being broadcast.

Memorizing channels

Antenna (Switch to Cable / Switch to Air) Before your television can begin memorizing the available channels, you must specify the type of signal source that is connected to the TV (i.e. an Air or a Cable system).

Auto Program

When selecting the Cable TV system: Selects the cable system. STD, HRC and IRC identify various types of cable TV systems. Contact your local cable company to identify the type of cable system that exists in your particular area. At this point, the signal source has been selected. After all the available channels are stored, it starts to remove scrambled channels. The Auto Program menu then reappears. Press the ENTER button to stop the channel store during Auto Program.

How to Stop Auto Programming

- Press the ENTER button.
- A message will ask Stop Auto Program?. Select Yes by pressing the ► button.
- Press the ENTER button.

Other Features

Clear Scrambled Channel

This function filters out scrambled channels after Auto Program is completed. This process may take up to 20-30 minutes.

Press the ENTER button to stop the Clear Scrambled Channel.

This function is only available in Cable mode.

Channel List

Channel List Option Menu

Set each channel using the Channel List menu options. Option menu items may differ depending on the channel status.

- Add / Delete: Delete or add a channel to display the channels you want.
- All deleted channels will be shown on the All Channels menu.
- A gray-colored channel indicates the channel has been deleted. The Add menu only appears for deleted channels.
- Delete a channel from the Added Channels or Favorite menu in the same manner.
- Add to Favorite / Delete from Favorite: Set channels you watch frequently as Favorites.
- Timer Viewing: You can set a desired channel to be displayed automatically at the set time, even when you are watching another channel. Set the current time first to use this function.
- Only memorized channels can be reserved.
- Reserved programs will be displayed in the Programmed menu.
- When a digital channel is selected, press the Next Program button to view the digital program. If you select the ENTER (Schedule) button on the next program, you can set Timer Viewing directly.

- Channel Name Edit: (analog channels only) Assign your own channel name.
- Select All: Select all the channels in the channel list.
- Deselect All: Deselect all the selected channels.
- You can only select Deselect All when one or more channels are selected.
- Auto Program: Scans for a channel automatically and stores in the TV.

Programmed

Channel List -- Programmed -- You can view, modify or delete a show you have reserved to watch.

- Change Info: Change a show you have reserved to watch.
- Cancel Schedules: Cancel a show you have reserved to watch.
- Information: Display a show you have reserved to watch. (You can also change the reservation information.)
- Select All / Deselect All: You can select or deselect all channels in the channel list.

Channel Mode

Change the channel mode directly between Added Channels and Favorite Channels.

The Favorite Channels is enabled only when you set Add to Favorite.

Fine Tune

(analog channels only)

If the reception is clear, you do not have to fine tune the channel, as this is done automatically during the search and store operation. If the signal is weak or distorted, fine tune the channel manually.

Fine tuned channels that have been saved are marked with an asterisk on the right-hand side of the channel number in the channel list.

To reset the fine-tuning, select Reset.

Picture Menu

Mode

Select your preferred picture type.

- When connecting a PC, you can only select Entertain and Standard.
- Dynamic: Suitable for a bright room.
- Standard: Suitable for a normal environment.
- Movie: Suitable for watching movies in a dark room.
- Entertain: Suitable for watching movies and games.
- Only available when connecting a PC.

Backlight / Contrast / Brightness / Sharpness / Color / Tint (G/R)

Your television has several setting options for picture quality control.

- When connecting a PC, you can only make changes to Backlight, Contrast, Brightness and Sharpness.

Advanced Settings

(available in Standard / Movie mode)

Compared to previous models, new Samsung TVs have a more precise picture.

- When connecting a PC, you can only make changes to Gamma and White Balance.
- Dynamic Contrast: Adjusts the screen contrast.
- Black Tone: Selects the black level to adjust the screen depth.
- Flesh Tone: Emphasize pink "flesh tone".
- Color Space: Adjusts the range of colors available to create the image.
- White Balance: Adjusts the color temperature for a more natural picture.
- R-Offset / G-Offset / B-Offset: Adjusts each color's (red, green, blue) brightness.
- R-Gain / G-Gain / B-Gain: Adjusts each color's (red, green, blue) brightness.
- Reset: Resets the White Balance to its default settings.
- Gamma: Adjusts the primary color intensity.
- Motion Lighting: Reduce power consumption by brightness control adapted motion.
- Available in Standard mode only.

Sound Menu

Mode

Standard: Selects the normal sound mode.

MUSIC: Emphasizes music over voices.

MOVIE: Provides the best sound for movies.

Clear Voice: Emphasizes voices over other sounds.

Equalizer

Reset: Resets the normal sound mode.

Balance L/R: Adjusts the balance between the right and left speaker.

- 100Hz / 300Hz / 1kHz / 3kHz / 10kHz (Bandwidth Adjustment): Adjusts the level of specific bandwidth frequencies.
- Reset: Resets the equalizer to its default settings.

DTS Surround

(standard surround mode only)

DTS TruSurround is a patented DTS technology that solves the problem of playing 5.1 multichannel content over two speakers. TruSurround delivers a compelling, virtual surround sound experience through any two-speaker playback system, including internal television speakers. It is fully compatible with all multichannel formats.

Preferred Language

(digital channels only)

Digital-TV broadcasts are capable of simultaneous transmission of many audio tracks (for example, simultaneous translations of the program into foreign languages).

You can only select a language from among the ones being broadcast.

Picture Options

When connecting a PC, you can only make changes to the Color Tone, Size, and HDMI Black Level.

- Color Tone
- Warm1 or Warm2 will be deactivated when the picture mode is Dynamic.
- Size: Your cable box/satellite receiver may have its own set of screen sizes as well. However, we highly recommend you use 16:9 mode most of the time.
- 16:9: Sets the picture to 16:9 wide mode.
- Zoom1: Use for moderate magnification.
- Zoom2: Use for a stronger magnification.
- Wide Fit: Enlarges the aspect ratio of the picture to fit the entire screen.
- 4:3: Sets the picture to basic (4:3) mode.
- Do not watch in 4:3 format for a long time. Traces of borders displayed on the left, right and center of the screen may cause image retention (screen burn) which are not covered by the warranty.
- Screen Fit: (DTV) Displays the full image without any cut-off when HDMI (720p / 1080i / 1080p) or Component (1080i / 1080p) signals are inputted.
- HD (High Definition): 16:9 - 1080i/1080p (1920x1080), 720p (1280x720)
- Settings can be adjusted and stored for each external device you have connected to an input on the TV.

Program Rating Lock

The **Program Rating Lock** feature automatically locks out programs that are deemed inappropriate for children. The user must enter a PIN (personal identification number) before any of the Program Rating Lock restrictions are set up or changed.

ⓘ **Program Rating Lock** is not available in **HDMI** or **Component** mode.

ⓘ The default PIN number of a new TV set is "0-0-0-0".

ⓘ **Program Rating Lock** is not available in **HDMI** or **Component** mode.

ⓘ **TV Parental Guidelines**: You can block TV programs depending on their rating. This function allows you to control what your children are watching.

ⓘ **MPAA Rating**: You can block movies depending on their MPAA rating. The Motion Picture Association of America (MPAA) has implemented a rating system that provides parents or guardians with advanced information on which films are appropriate for children.

ⓘ **Canadian English**: You can block TV programs depending on their Anglophone Canadian.

ⓘ **Canadian French**: You can block TV programs depending on their French Canadian rating.

ⓘ **Downloadable U.S. Rating**: Parental restriction information can be used while watching DTV channels.

ⓘ **Change PIN**: The Change PIN screen will appear. Choose any 4 digits for your PIN and enter it in **Enter New PIN**. Re-enter the same 4 digits in **Confirm New PIN**. When the Change PIN screen disappears, press the OK button. The TV has been changed your new PIN.

ⓘ If you forget the PIN, press the remote-control "0-0-0-0" button. (off) → MUTE → 8 → 2 → 4 → POWER(on)

Caption

(On-Screen Text Messages)

ⓘ **Caption**: You can switch the caption function on or off. If captions are not available, they will not be displayed on the screen.

ⓘ The **Caption** feature does not work in **Component** or **HDMI** mode.

ⓘ **Caption Mode**: You can select the desired caption mode.

ⓘ **Default / CC1-CC4 / Text1-Text4**: (analog channels only) The Analog Caption function operates in either analog TV channel mode or when a signal is supplied from an external device to the TV. (Depending on the broadcasting signal, the Analog Caption function may or may not work with digital channels.)

ⓘ **Default / Service1-Service6 / CC1-CC4 / Text1-Text4**: (digital channels only) The Digital Captions function works with digital channels.

ⓘ **Service1-6** may not be available in digital caption mode depending on the broadcast.

ⓘ **Digital Caption Options**: (digital channels only)

ⓘ **Size**: Options include Default, Small, Standard and Large. The default is Standard.

ⓘ **Font Style**: Options include Default and Styles 0 to 7. The default is Style 0.

ⓘ **Foreground Color**: Options include Default, White, Black, Red, Green, Blue, Yellow, Magenta and Cyan.

You can change the color of the letter. The default is White.

ⓘ **Background Color**: Options include Default, White, Black, Red, Green, Blue, Yellow, Magenta and Cyan. You can change the background color of the caption. The default is Black.

ⓘ **Foreground Opacity**: This adjusts the opacity of text. Options include Default, Transparent, Translucent, Solid and Flashing.

ⓘ **Background Opacity**: This adjusts the opacity of the caption background. Options include Default, Transparent, Translucent, Solid and Flashing.

ⓘ **Return to Default**: This option sets each Size, Font Style, Foreground Color, Background Color, Foreground Opacity and Background Opacity to its default.

ⓘ **Digital Caption Options** are available only when **Default** and **Service1-Service6** can be selected in **Caption Mode**.

ⓘ The Foreground and Background cannot be set to have the same color.

Boot Logo

Enable/disable displaying the logo while the TV starts up.

Eco Solution

ⓘ **Energy Saving**: This adjust the brightness of the TV in order to reduce power consumption. If you select **Picture Off**, the screen is turned off, but the sound remains on. Press any button except volume button to turn on the screen.

ⓘ **No Signal Power Off**: Sets how quickly the TV switches to standby mode, if no picture is being received.

ⓘ **Auto Power Off**: The TV will be automatically turned off when no user operation is received for 4 hours.

Auto Protection Time

If the screen remains idle with a still image for a certain period of time defined by the user, the screen saver is activated to prevent the formation of ghost images on the screen.

Support Menu

Self Diagnosis

ⓘ **Picture Test**: Use to check for picture problems. If the problem continues to occur, check the color pattern.

ⓘ **Sound Test**: Use the built-in melody sound to check for sound problems.

ⓘ **Signal Strength**: (digital channels only) An HD channel's reception quality is either perfect or the channels are unavailable. Adjust your antenna to increase signal strength.

ⓘ **Reset**: Reset all settings to the factory defaults.

ⓘ The PIN input screen appears before the setup screen.

ⓘ Enter your 4-digit PIN. Change the PIN using the **Change PIN** option.

Software Upgrade

ⓘ **Software Upgrade** can be performed by downloading the latest firmware from samsung.com to a USB memory device.

Use Mode

You can turn the TV into a display model for retail environments by depending on the broadcast.

ⓘ For all other uses, select **Home Use**.

ⓘ With **Store Demo**, some functions are disabled, and the TV automatically resets itself after a preset amount of time.

HD Connection Guide

Refer to this information when connecting external devices to the TV.

Contact Samsung

View this information when your TV does not work properly or when you want to upgrade the software. You can find information regarding our call centers and how to download products and software.

Media Play

Enjoy photos, music and/or movie files saved on a USB Mass Storage Class (MSC) device.



Connecting a USB Device

- Turn on your TV.
- Connect a USB device containing photo, music and/or movie files to the USB jack on the side of the TV.
- When USB is connected to the TV, you can select **Media Play (USB)** in **Applications** menu.

Using the Media Play Button

1. Press the MENU button. Press the ▲ or ▼ button to select **Applications**, then press the ENTER (↵) button.

2. Press the ▲ or ▼ button to select **Media Play (USB)**, then press the ENTER (↵) button.

3. Press the ◀ or ▶ button to select an icon (**Videos, Music, Photos, Settings**), then press the ENTER (↵) button.

ⓘ It might not work properly with unlicensed multimedia files.

ⓘ Need-to-Know List before using **Media Play (USB)**

- Supported file systems are FAT and NTFS.
- Certain types of USB Digital camera and audio devices may not be compatible with this TV.
- Media Play** only supports USB Mass Storage Class (MSC) devices. MSC is a Mass Storage Class Bulk-Only Transport device. Examples of MSC are Thumb drives and Flash Card Readers. Devices should be connected directly to the TV's USB port. USB HDD is not supported.

• Before connecting your device to the TV, please back up your files to prevent them from damage or loss of data. SAMSUNG is not responsible for any data file damage or data loss.

- A USB device that requires high power (more than 0.5A) may not be supported.

• Do not disconnect the USB device while it is loading.

• The higher the resolution of the image, the longer it takes to display on the screen.

• The maximum supported JPEG resolution is 15360 x 8640 pixels. If a file is corrupted or the TV does not support the file type, the "Not Supported File Format" message appears.

• The TV cannot play MP3 files with DRM that have been downloaded from a for-pay site. Digital Rights Management (DRM) is a technology that supports the creation, distribution, and management of digital content in an integrated and comprehensive way, including protecting the rights and interests of content providers, preventing illegal copying of contents, and managing billings and settlements.

• PTP device is not supported.

• If an over-power warning message is displayed while you are connecting or using a USB device, the device may not be recognized or may malfunction.

• If the TV has no input during the time set in **Auto Protection Time**, the Screensaver will run.

• The power-saving mode of some external hard disk drives may be released automatically when you connect them to the TV.

• If you use a USB extension cable, the TV may not recognize the USB device or may not be able to read the files on the device.

If a USB device connected to the TV is not recognized, the list of files on the device is corrupted, or a file in the list is not played, connect the USB device to a PC, format the device, and check the connection.

• If a file you deleted from the PC is still found when you run **Media Play**, use the "Empty the Recycle Bin" function on the PC to permanently delete the file.

• **Photos** only supports sequential jpeg format.

• The scene search and thumbnail functions are not supported in the **Videos**.

• If the number of files and folders saved on a USB storage device is approximately over 4000, the files and folders may not appear and some folders may not be opened.

• The maximum displayed number of files, including sub folders, in one folder of USB storage device is 2000.

• The media may not be playing smoothly when using the device lower than USB 2.0.

Videos

1. Press the ◀/▶ buttons to select **Videos**, then press the ENTER (↵) button in the **Media Play** menu.

2. Press the ◀/▶/▲/▼ buttons to select the desired video in the file list.

3. Press the ENTER (↵) button or (▶) (Play) button.

- The selected file is displayed on the top with its playing time.

- If video time information is unknown, playing time and the progress bar are not displayed.

- During video playback, you can search using the ◀/▶ buttons.

ⓘ In this mode, you can play movie clips contained in a game, but you cannot play the game itself.

• Supported Subtitle Formats

- External

Name	File extension
MPEG-4 timed text	.txt
SAMI	.smi
SubRip	.srt
SubViewer	.sub
Micro DVD	.sub or .txt
SubStation Alpha	.ssa
Advanced SubStation Alpha	.ass

- Internal

Name	Container	Format
Xsib	AVI	Picture Format
SubStation Alpha	MKV	Text Format
Advanced SubStation Alpha	MKV	Text Format
SubRip	MKV	Text Format
MPEG-4 Timed text	MP4	Text Format

• Supported Video Formats

File Extension	Container	Video Codec	Resolution	Frame rate(fps)	Bit rate (Mbps)	Audio Codec
*.avi		Motion JPEG	640x480		8	
*.mkv		H.264 BP/ MP1/HP				
*.ast		H.264 BP/ MP / HP				AC3
*.wmv	AVI	MKV	Dxv.3.11 / 4 / 5 / 6			LPCM APOCM (IMA, MS)
*.mp4	MKV	ASF	MPEG4 SP/ ASF			AAC HE-AAC
*.mov	MKV	ASF	MPEG4 SP/ ASF			DD+
*.3gp	MKV	ASF	MPEG4 SP/ ASF			DD+
*.vro	MOV	FLV	Window Media Video v9VC1	1920x1080	MAX.30	30
*.mpg	MOV	FLV	Window Media Video v9VC1			
*.mpeg	VOB	TS	MPEG2			MPEG(MP3) DTS (core, LBR)
*.tp	VOB	TS	MPEG2			G.711(A-Law, μ-Law)
*.tp	VOB	TS	MPEG2			
*.mov	TS	MPEG2				
*.flv						
*.vob						
*.avi						
*.divx						
*.webm	WebM	VP8	1920x1080	6-30	20	Vorbis

Other Restrictions

• Codecs may not function properly if there is a problem with the content.

• Video content does not play or does not play correctly if there is an error in the content or container.

• Sound or video may not work if they have standard bit rates/frame rates above the TV's compatibility ratings.

• If the Index Table is an error, the Seek (Jump) function will not work.

• When playing video over a network connection, the video may not play smoothly because of data transmission speeds.

• Some USB/digital camera devices may not be compatible with the TV.

• While the TV is playing a video at the bit rate of 10 Mbps or higher, the menu screens may be displayed slowly.

Video Decoder
Supports up to H.264, Level 4.1
H.264 FMO / ASO / RS, VC1 / AP L4 are not supported.
GMC 2 or above is not supported.

Audio Decoder
WMA 10 Pro supports up to 5.1 channels. Supports up to the M2 profile. WMA lossless audio is not supported.
QCPEL and AMR NB/WB are not supported.
Vorbis is supported for up to 2 channels.
Dolby Digital Plus is supported for up to 5.1 channels.
The DTS LBR codec is only available for MKV / MP4 /TS containers.

Music

1. Press the ◀/▶ buttons to select **Music**, then press the ENTER (↵) button in the **Media Play** menu.

2. Press the ◀/▶/▲/▼ buttons to select the desired Music in the file list.

3. Press the ENTER (↵) button or (▶) (Play) button.

ⓘ During music playback, you can search using the ◀/▶ buttons.

ⓘ ◀/▶ (REW) and ▶/▶ (FF) buttons do not function during play.

ⓘ Only displays the files with MP3 file extensions. Other file extensions are not displayed, even if they are saved on the same USB device.

ⓘ If the sound is abnormal when playing MP3 files, adjust the **Equalizer** in the **Sound** menu. (An over-modulated MP3 file may cause a sound problem.)

Photos

1. Press the ◀/▶ buttons to select **Photos**, then press the ENTER (↵) button in the **Media Play** menu.

2. Press the ◀/▶/▲/▼ buttons to select the desired photo in the file list.

3. Press the ENTER (↵) button or (▶) (Play) button.

ⓘ NOTE

- While a photo list is displayed, press the (▶) (Play) / ENTER (↵) button on the remote control to start the slide show.

- All files in the file list section will be displayed in the slide show.

- During the slide show, files are displayed in order.

- During the slide show, you can adjust the slide show speed using ◀▶ (REW) or ▶▶ (FF) button.

- You can move to other file using the ◀/▶ buttons.

Image	Photo	Resolution
JPEG	Base-line	15360 x 8704
	Progressive	1024 x 768

Other Restrictions

• CMYK and YCKC Color space JPEGs are not supported.

Playing Multiple Files

ⓘ **Playing selected video/music/photo files**

1. Press the Yellow button in the file list to select the desired file.

2. Repeat the above operation to select multiple files.

ⓘ **NOTE**

- The ✓ /mark appears to the left of the selected files.

- To cancel a selection, press the Yellow button again.

- To deselect all selected files, press the TOOLS button and select **Deselect All**.

3. Press the TOOLS button, and then select **Play Selected Contents**.

ⓘ **Playing the video/music/photo file group**

1. While a file list is displayed, move to any file in desired group.

2. Press the TOOLS button, and then select **File Folder**.

Media Play - Additional Functions				
Videos/Music/Photos Play Option menus				
When playing a file, press the TOOLS button.				
Category	Operation	Videos	Music	Photos
Title	You can move the other file directly.	✓		
Repeat Mode	You can play movie and music files repeatedly.	✓	✓	
Picture Size	You can adjust the picture size to your preference.	✓		
Picture Mode	You can adjust the picture setting.	✓	✓	✓
Sound Mode	You can adjust the sound setting.	✓	✓	✓
Subtitle Settings	You can play the video with Subtitles. This function only works if the subtitles are the same file name as the video.	✓		
Audio Format	You can select the digital audio output format.	✓		
Audio Language	You can change the audio language if the video has more than one language.	✓		
Stop Slide Show / Start Slide Show	You can start or stop a Slide Show.			✓
Slide Show Speed	You can select the slide show speed during the slide show.			✓
Background Music	You can set and select background music when watching a Slide Show.			✓
Zoom	You can zoom into images in full screen mode.			✓
Rotate	You can rotate images in full screen mode.			✓
Information	You can see detailed information about the played file.	✓	✓	✓

Settings

Using the Setup Menu

ⓘ **DivX® Video On Demand**: Shows the registration code authorized for the TV. If you connect to the DivX web site and register with 10-digit registration code, you can download the VOD activation file.

ⓘ Once you play it using Media Play, the registration is completed.

ⓘ For more information on DivX® VOD, visit "http://vod.divx.com".

ⓘ **Information**: Select to view information on the connected device.

Other Information

Installing the Wall Mount Kit

The wall mount kit (sold separately) allows you to mount the TV on the wall.

For detailed information on installing the wall mount, see the instructions provided with the wall mount items. Contact a technician for assistance when installing the wall mount bracket. Samsung Electronics is not responsible for any damage to the product or injury to yourself or others if you elect to install the wall mount on your own.

To prevent the TV from falling

- Since the necessary clamps, screws, and string are not supplied, please purchase these additionally.
- Drive the screws into the clamps and firmly fasten them onto the wall. Make sure the screws are firmly fixed into the wall.
- Remove the screws from the back center of the TV, put the screws into the clamps, and then fasten the screws onto the TV again.
- Connect the clamps fixed onto the TV and the clamps fixed onto the wall with a strong cable and then tie the string tightly.
- Verify all connections are properly secured. Periodically check the connections for any sign of fatigue or failure. If you have any doubt about the security of your connections, contact a professional installer.
- Install the TV close to the wall so that it does not fall.
- It is safe to connect the string so that the clamps fixed on the wall are equal to or lower than the clamps fixed on the TV. Untie the string before moving the TV.

ⓘ **NOTE**

ⓘ Standard dimensions for wall mount kits are shown in the table below.

ⓘ When purchasing our wall mount kit, a detailed installation manual and all parts necessary for assembly are provided.

ⓘ Do not use screws that do not comply with the VESA standard screw specifications.

ⓘ Do not use screws that are longer than the standard dimension or do not comply with the VESA standard screw specifications. Screws that are too long may cause damage to the inside of the TV set.

ⓘ For wall mounts that do not comply with the VESA standard screw specifications, the length of the screws may differ depending on the wall mount specifications.

ⓘ Do not fasten the screws too firmly. This may damage the product or cause the product to fall, leading to personal injury. Samsung is not liable for these kinds of accidents.

ⓘ Samsung is not liable for product damage or personal injury when a non-VESA or non-specified wall mount is used or the consumer fails to follow the product installation instructions.

ⓘ Do not mount the TV at more than a 15 degree tilt.

ⓘ Always have two people mount the TV on a wall.

Troubleshooting

If the TV seems to have a problem, first review this list of possible problems and solutions. If none of these troubleshooting tips apply, visit samsung.com, then click on Support, or call Samsung customer service at 1-800-SAMSUNG.

Problem	Possible Solution
Flickering and Dimming	If your Samsung Television is flickering or dimming sporadically, you may need to disable some of its energy efficient features like the Energy Saving feature. If you follow below step with your remote, you can turn these features off or on. <p>• Energy Saving : MENU → Setup → Eco Solution → Select Settings</p> ⓘ If you find that the color on