

Philips
Professional LED TV

20" Studio

LED
DVB-T/C MPEG 2/4

20HFL2819D



Great value in a modern design

with powersaving LED technology

With this energy efficient Hospitality LED TV, you will enjoy efficient installation via USB cloning and dedicated hospitality features like menu and control locking.

Advanced hotel features and future proof

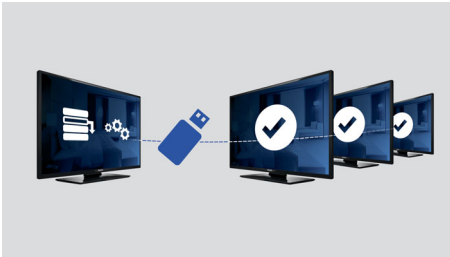
- Brilliant LED images with low power consumption
- USB cloning of all settings for quick installation
- USB for multimedia playback
- Integrated Connectivity Panel
- Low power consumption
- Volume limitation
- Installation menu locking
- Welcome page on screen display
- Side controls locking

A

PHILIPS

Highlights

USB Cloning



Provides the ability to easily copy all programming and channel programming settings from one TV into other TV sets in less than a minute. The feature ensures uniformity between TV sets and significantly reduces installation time and costs.

Volume limitation

This feature predefines the volume range with which the TV set is allowed to operate, preventing excessive volume adjustments and avoiding disturbance of next door guests.

Installation menu locking

Prevents unauthorized access to installation and configuration settings, to ensure maximum guest convenience and avoid unnecessary reprogramming costs.

Low power consumption

Philips TVs are designed to minimize power consumption. This will not only reduce environmental impact but also lower operating costs.

Integrated Connectivity Panel

The Integrated Connectivity Panel allows your guests to seamlessly connect their personal devices to your TV without the need of any external Connectivity Panel.

LED



The most advanced LED lighting technology in this TV combines an eye-catching minimalistic design with stunning image quality as well as the lowest power consumption in its category. On top of that, LED lighting technology does not contain any hazardous materials. Thus, with LED backlight you can enjoy low power consumption, high brightness, incredible contrast, sharpness and vibrant colors.

USB (photos, music, video)



Connect your USB memory-stick, digital camera, mp3 player or other multimedia device to the USB port at the side of your TV to enjoy photos, videos and music with the easy to use on screen content browser.

Welcome Page



A welcome greeting is displayed each time the TV set is switched on.



Specifications

Picture/Display

- Display: LED HD TV
- Diagonal screen size: 20 inch / 51 cm
- Aspect ratio: 16:9
- Panel resolution: 1600 x 900
- Viewing angle: 170° (H) / 160° (V)
- Picture enhancement: Digital Crystal Clear, 100 Hz Perfect Motion Rate
- Color cabinet: Black
- Brightness: 250 cd/m²

Supported Display Resolution

- Computer inputs: up to 1920x1080 @ 60Hz
- Video inputs: 24, 25, 30, 50, 60 Hz, up to 1920x1080p

Tuner/Reception/Transmission

- Digital TV: DVB-C MPEG2/MPEG4, DVB-T MPEG2/MPEG4
- TV system: PAL, SECAM
- Video Playback: PAL, SECAM, NTSC

Sound

- Sound Enhancement: Auto Volume Leveller, Incredible Surround, Treble and Bass Control, Clear Sound

Loudspeakers

- Built-in speakers: 2

Connectivity

- Number of AV connections: 1
- Number of USBs: 1
- Number of HDMI connections: 1
- Number of scarts (RGB/CVBS): 1
- HDMI features: Audio Return Channel
- Side connections: Audio L/R in, CVBS in, Headphone Out, USB 2.0
- Other connections: Antenna IEC75, S/PDIF out (coaxial), PC-In VGA, Common Interface Plus (CI+)

Convenience

- Ease of Installation: Automatic Tuning System (ATS), Automatic Channel Install(ACI), Auto Program Naming, Autostore, Cloning of TV settings via USB, Installation menu locking, Security menu access
- Ease of Use: Auto Volume Leveller (AVL), On Screen Display, Program List, Side Control, 1

channel list analog/digital

- Comfort: Hotel Guest features, Welcome Page (.png), Switch on channel, Volume limitation, Sleep timer
- Prison mode: Txt, MHEG, USB, EPG, Sub block
- Teletext: 1000 page Smart Text
- Electronic Program Guide: 8 day Electronic Program Guide, Now + Next EPG
- Screen Format Adjustments: 4:3, 14:9, 14:9 zoom, 16:9, Automatic, Subtitle, Cinema
- Remote control: 22AV1407A/12
- Firmware upgradeable: Firmware upgradeable via USB

Healthcare

- Control: Multi remote control (4x)
- Convenience: Headphone out

Multimedia Applications

- Multimedia connections: USB
- Video Playback Formats: H264/MPEG-4 AVC, MPEG-1, MPEG-2, MPEG-4, Containers: AVI, MKV, WMV9/VC1
- Music Playback Formats: MP3, M4A, WMA (v2 up to v9.2)
- Picture Playback Formats: JPEG, BMP, PNG

Power

- Mains power: AC 220-240V; 50-60Hz
- Eu Energy Label power: 19 W
- Energy Label Class: A
- Annual energy consumption: 27 kW h
- Standby power consumption: <0.3W
- Ambient temperature: 5 °C to 35 °C
- Power Saving Features: Eco mode, Picture mute (for radio)

Dimensions

- Set dimensions (W x H x D): 475 x 297 x 35/44 mm
- Set dimensions with stand (W x H x D): 475 x 330 x 135 mm
- Product weight: 2.85 kg
- VESA wall mount compatible: 75 x 75 mm

Accessories

- Included accessories: Remote Control, Batteries for remote control, Table top stand, Warranty Leaflet, Legal and safety brochure
- Optional accessories: Set up remote 22AV8573/00



Issue date 2015-01-20

Version: 2.1.1

12 NC: 8670 001 19704
EAN: 87 18863 00137 0

© 2015 Koninklijke Philips N.V.
All Rights reserved.

Specifications are subject to change without notice.
Trademarks are the property of Koninklijke Philips N.V.
or their respective owners.

www.philips.com