

⊕ : Depending on model
視乎型號而定

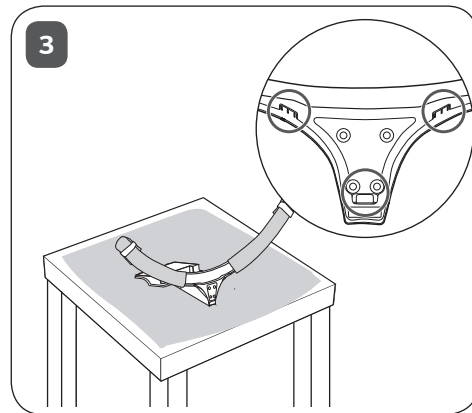
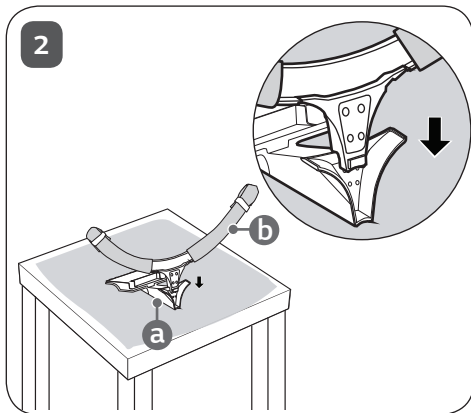
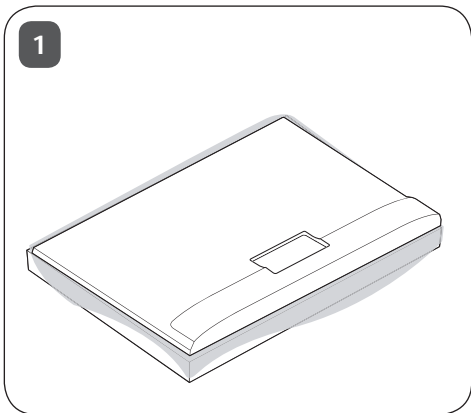


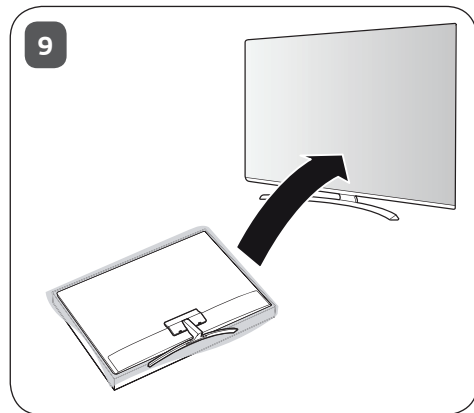
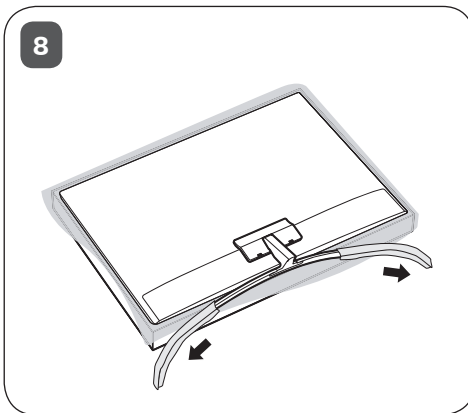
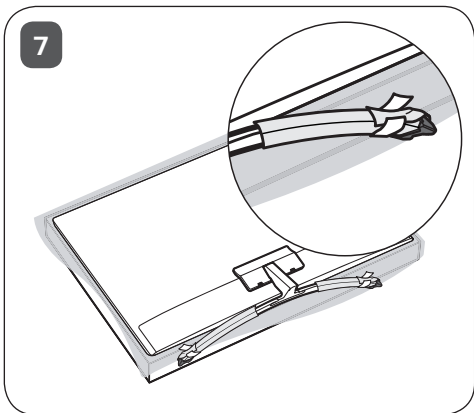
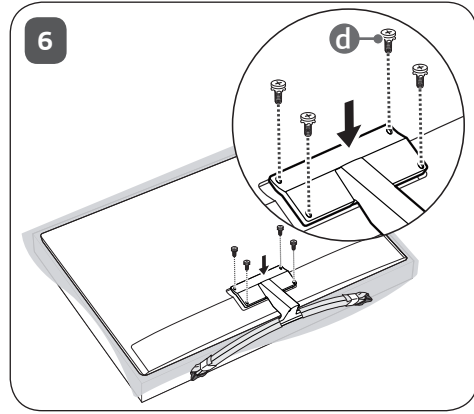
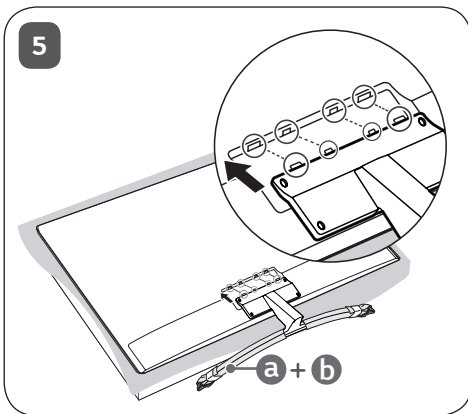
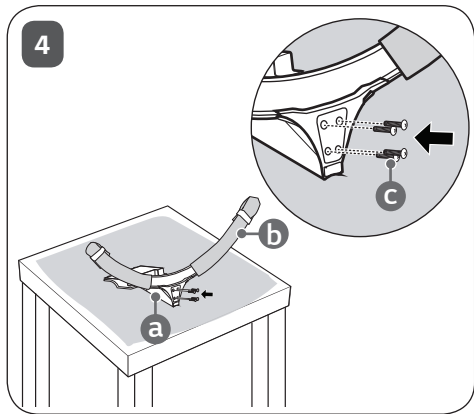


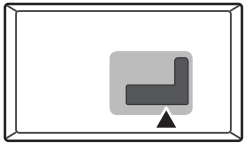
English













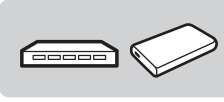

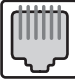







粵語

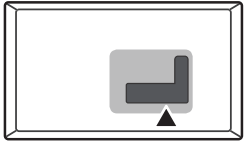
- Read **Safety and Reference**.
- For the power supply and power consumption, refer to the label attached to the product.
- 閱讀安全及參考資料。
- 關於電源供應及耗電量，參閱於產品上的標籤。





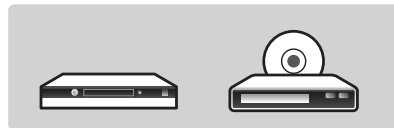
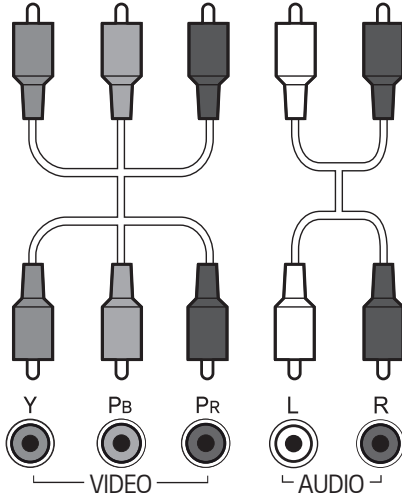
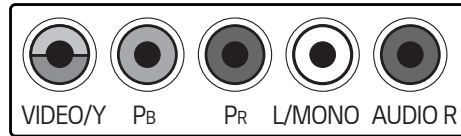


<p>ANTENNA/ CABLE IN</p> 	 
<p>HDMI IN</p> 	 
<p>HDMI IN / ARC</p> 	  
<p>USB IN</p> 	  
<p>LAN</p> 	 
<p>AUDIO OUT/ H/P OUT</p> 	
<p>OPTICAL DIGITAL AUDIO OUT</p> 	 

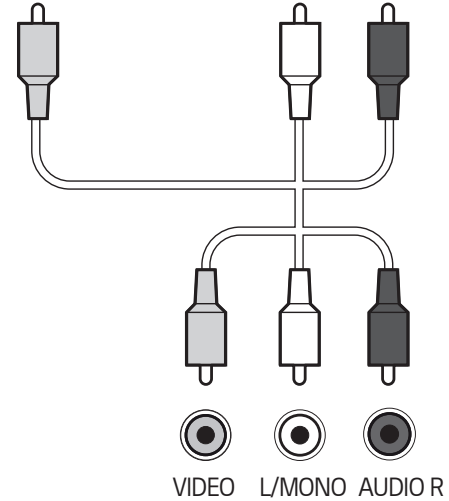
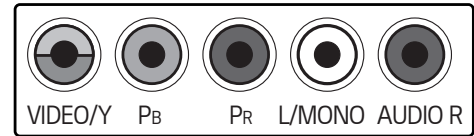


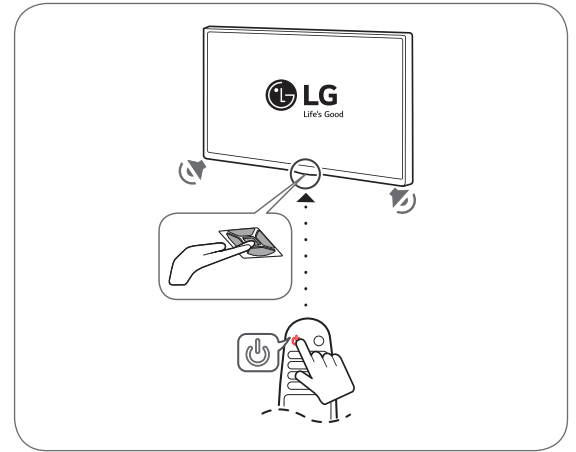
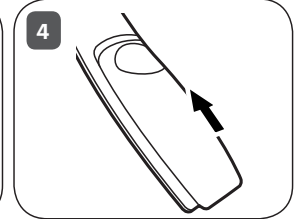
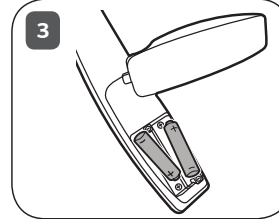
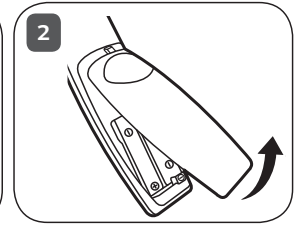
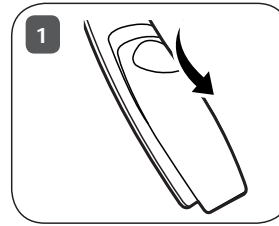
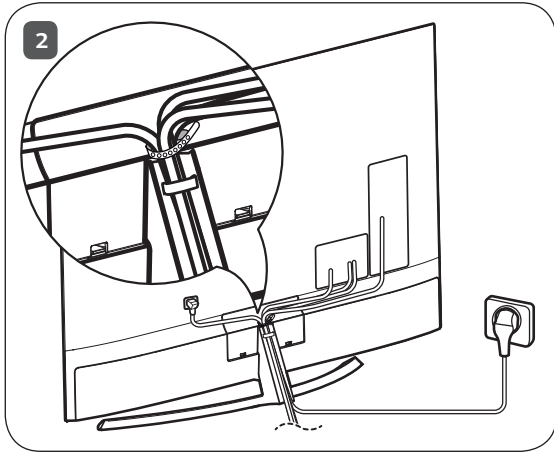
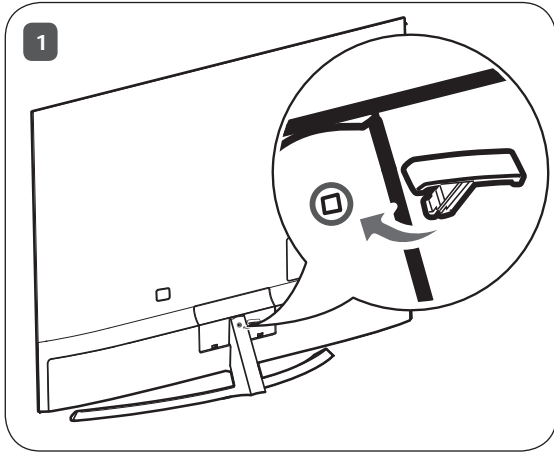
UJ75**

COMPONENT IN



AV IN







	W (毫米 / mm)	含底座 (毫米) / With stand (mm)		不含底座 (毫米) / Without stand (mm)		含底座 (公斤) / With stand (kg)	不含底座 (公斤) / Without stand (kg)
		高 / H	深 / D	高 / H	深 / D		
43UJ7500-CB	967.6	628.9	213.4	566.4	62.1	11.4	10.2
49UJ7500-CB 49SJ8000-CA	1100.1	698.6	247.3	640.9	62.1	14.1	12.7
55UJ7500-CB 55SJ8000-CA	1236	773.5	247.3	717.6	62.1	16.7	15.3
65UJ7500-CB	1455.2	898.1	312.4	840.9	63.5	25.5	24.0
電源要求 / Power requirement					AC 100-240 V~ 50 / 60 Hz		



用戶手冊 安全及參考

LED 電視*

* LG LED TV 使用的是帶LED背光的LCD螢幕。

請於操作產品前仔細閱讀本手冊並將其保留以供未來參考之用。



www.lg.com

P/No : MFL69724802 (1705-REV01)

韓國印刷

Copyright © 2017 LG Electronics Inc. All Rights Reserved. 版權所有

警告! 安全指示





注意

觸電風險
請勿打開



注意：為減低觸電風險，請勿移除蓋板（或背板）。當中並無用戶可自行維修的組件。請向合資格維修人員諮詢相關維修安排。

 此標誌用作提醒使用者，產品的機殼內有非絕緣保護的「危險電壓」，相關電壓的強度足以構成觸電風險。

 此標誌用作提醒使用者，電器附帶的相關產品說明，已列出重要操作及保養（維修）指示。

警告：為減低火災或觸電風險，請勿將本產品置於雨中或潮濕環境中。

• 只能用乾布清潔。請勿將電視及遙控器放置於下列環境：

- 陽光直接照射之位置
- 高濕度範圍，例如浴室
- 發熱源附近例如煮食爐及其他發熱裝置
- 輕易暴露於蒸氣或油煙如廚房工作範圍或放濕器附近
- 暴露於雨水或當風位置
- 靠近儲水容器例如花樽

否則，可能導致火災、觸電、產品不能正常運作或變形。

- 請勿將產品放置在暴露於灰塵的地方。將可能引致火災。
- 從裝置拔下電源插頭。插頭必須保持易於操作。
- 請勿以濕手接觸電源插頭。若插頭蘇腳沾濕或被灰塵覆蓋，請徹底弄乾電源插頭或擦拭灰塵。過於潮濕有可能導致觸電。
- 確保將電源線連接接地電流。（未有設置安全地線的裝置除外。）有可能導致觸電或受傷。
- 徹底固定電源線。
如電源線未徹底固定，則可能引起火災。

- 確保電源線並無與發熱源（如暖爐）接觸。這可能會導致火災或觸電危險。
- 切勿將重物或產品本身置於電源線上。否則，可能導致火災或觸電。
- 將天線厘疊於建築物之間以防止雨水流入產品。此有可能引致水分損壞產品內部並導致觸電。
- 於將電視安裝於牆上時，確保不要以電視背部之電源及信號線懸掛安裝。
此有可能導致火災、觸電。
- 請勿於單個多重電力輸出插座使用過多電力裝置。否則將有可能因過熱引發火災。
- 請勿讓產品跌落或使其於與外部裝置連接時翻倒。否則將可能導致受傷或產品損壞。
- 請將包裝防潮材料或乙烯基包裝物料放置在兒童無法觸及的地方。防潮材料為有害物質，並不可吞食。若不小心吞食，請用力使其吐出，並前往鄰近醫院就醫。乙烯基包裝物亦可引起窒息。請放置於兒童無法觸及的地方。
- 切勿讓孩童攀爬於電視上。否則將導致電視翻倒並引致嚴重受傷。
- 於廢棄電池時注意以防止孩童吞食。如小孩不慎吞食電池請尋求醫生協助即時就醫。
- 請勿將任何金屬/導電物體（例如金屬筷子/餐具/螺絲批），插入電源線插頭及牆壁電源插座之間。另外，將電源線插入牆壁後，請勿立即接觸。將可能導致觸電。
- 請勿於產品附近放置或儲存易燃物品。可導致因不慎處理易燃物品而引致着火/爆炸或火災。
- 請勿將金屬物體（例如錢幣、髮夾、筷子或金屬絲等）或易燃物（如紙張及火柴）投入產品內部。請特別格注意兒童安全。可能導致觸電、發生火災或受傷。若有異物掉入產品內，請拔除電源線，並聯絡服務中心。
- 請勿於本產品上噴水，或用易燃物質（苯或稀釋劑）拭擦。可導致火災或觸電。
- 請勿撞擊本產品，勿使任何物件掉入本產品中，不可用物件拋擲屏幕。可能引致受傷或產品損壞。
- 雷電或颱風時，嚴禁觸碰本產品或天線。將可能導致觸電。
- 於氣體洩漏時，嚴禁觸碰入牆電源插座，並打開窗戶通風。可能因火花引起火災或燒毀。

- 請勿隨意自行拆開、維修或修改產品。可導致火災或觸電。聯絡服務中心進行檢查、校準或維修。
- 如發生任何下列情況，即時切斷產品電源並聯絡當地服務中心。
 - 產品曾受損毀
 - 產品曾被異物進入
 - 產品曾產生煙霧或不尋常氣味
- 可能導致火災或觸電。
- 若長時間不使用產品，請拔除產品電源線。灰塵覆蓋可導致火災，或絕緣層受損可導致漏電、觸電或火災。
- 不可將產品暴露於滴水或水環境下；不可於產品上放置任何裝有液體的物件，例如花瓶。
- 如牆壁會暴露於油或油霧，請勿在上面安裝此產品。此舉可能會損壞產品，並導致產品掉落。
- 如水或其他物質進入了產品（如 AC 充電器、電源線、電視機），請中斷連接電源線並馬上聯絡服務中心。
 - 否則，可能導致火災或觸電。
- 僅可使用經 LG Electronics 認可的 AC 適配器和電源線。否則，可能導致火災、觸電、產品無法正常運作或變形。
- 切勿拆開 AC 適配器或電源線。這樣可能導致火災或觸電。
- 請小心處理適配器避免掉落或被撞擊遭到撞擊可能會對產品造成損害。
- 確保電源線穩固地連接到電視的電源插頭。
- 將產品安裝於不存在無線電波的地方。
- 請於電源線及天線間預留足夠空間以防止當天線掉落時觸及電源線。此將可能導致觸電。
- 請勿將產品安裝於不穩固的層架或斜面上。亦應避免將產品放置於震動或不能安全承托產品的位置。否則，可能因產品跌落或翻倒而導致受傷或產品損壞。
- 如將電視安裝於底座上，請採取措施以預防產品翻倒。否則，將可能導致電視翻倒並引致受傷。
- 如希望將產品安裝於牆上，請於產品背面安裝 VESA 標準掛牆介面（選購配件）。於安裝套件以使用掛牆架（選購配件）時請注意固定以防墜落。
- 只使用製造商指定的附件/配件。
- 於安裝天線時請諮詢認可技師。此可能引起火災或觸電危險。
- 建議於觀看電視時保持最少為螢幕對角線長度 2 至 7 倍之距離。如長時間觀看電視有可能導致視力模糊。
- 規定使用特定類型電池。此可能導致遙控器損壞。
- 請勿將新舊電池混合使用。此可導致電池過熱及洩漏。
- 電池不應暴露於高溫的地方。例如，避免產品暴露於直射陽光下，開放式火爐及電暖爐邊。
- 遙控器信號有可能受陽光或其他強光干擾。如此情況發生，將室內環境調暗。
- 當連接外部裝置如電視遊戲機時，確保連接線有足夠長度。否則，可能因產品跌落或翻倒而導致受傷或產品損壞。
- 請勿以插入或拔除電源插頭方式開啟/關閉產品。（請勿使用電源插頭作為開關用途。）此可導致機件損壞或觸電可能。
- 請遵從下列安裝指示以防止產品過熱。
 - 產品與牆壁的距離應超於 10 厘米。
 - 請勿將產品安裝於不通風位置（例如：書櫃或櫥櫃內）。
 - 請勿將產品安裝於地毯或軟墊上。
 - 確保桌布或窗簾並無妨礙通風口。可能引致火災。
- 請注意於長時間觀看電視期間避免接觸通風口因其可能散發熱力。此並不影響產品的運作或性能。
- 請定期檢查設備纜線，如外表受損或變形，請立即拔除電源，停止使用設備，並請授權服務商更換受損部份。
- 防止灰塵積聚於電源插頭或插座上。將可能引致火災。
- 保護電源線以防止受到物理性如扭曲、折彎、緊夾、受到門的擠壓或踩踏或機件受損。請加倍留意插頭、入牆插座以及裝置的電線出口。
- 請勿以手或指甲、鉛筆或鋼筆等尖銳物件用力按壓螢幕，或使其刮花。
- 避免長時間接觸或以手指、握緊螢幕。如不遵從將可導致螢幕短暫變形。

- 當裝置連接到交流電入牆插座，即使以開關關閉裝置，也不會與交流電源斷開。
- 於拔除電源插頭時，抓緊插頭以將其拔除。
- 如電源線內的金屬線脫離將可能引致火災。
- 於移動產品時，確保先將電源關閉。然後，拔除電源線、天線纜線及所有連接纜線。電視組合或電源線有可能受損並因此引發火災或觸電可能。
- 當移動產品或移除產品包裝時因產品重量需二人同時進行。否則可能導致受傷。
- 向合資格服務人員諮詢所有有關維修事宜。當產品受到任何形式的損壞時，例如電源線或插頭損壞，液體濺入或物件落入裝置中，裝置暴露於雨水或潮濕環境，裝置不能正常工作，或裝置掉落摔壞，均需進行維修服務。
- 請勿在電視旁使用高壓電器（例如，電蚊拍）。這可能引起產品故障。
- 請於清洗產品及其組件時先拔除電源並以軟布拭擦。使用力度過大將可能導致磨損或褪色。請勿以水噴灑或以濕布拭刷。請勿使用會對產品及其屏幕造成損壞的化學品，例如玻璃清潔劑、空氣清新劑、殺蟲劑、潤滑劑、汽車或工業用蠟劑、磨光劑、稀釋劑、苯、酒精等。否則，將可能導致火災、觸電或產品損壞（變形、腐蝕或破裂）。

警告!

請勿將電視機置於搖晃不穩的位置，因為電視機可能會掉落並導致嚴重個人傷害及傷亡。只要採取下列預防工作便可避免傷害事故發生（特別是兒童傷害）：

- 使用製造商建議的儲存櫃及支架置放電視。
- 只選用可安全支撐電視機的家具。
- 確保電視機不會懸在支撐家具的邊沿。
- 切勿將電視機置放在家具高處（如櫥櫃或書架），除非以適當的支撐物固定家具和電。
- 電視機和支撐家具之間不要夾置布料或其他材料。
- 告訴兒童爬上家具觸碰電視機或其控制器的危險性。

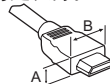
如要收藏並將電視機置放於其他地方，建議一律採用上述建議。

符號

~	AC 代表交流電。
===	DC 代表直流電。
□	代表第二級設備。
⏻	代表待機。
	代表「開啟」（電源）。
⚡	代表危險電壓。

準備使用

- 如電視從廠商運出後首次開啟，電視初始化可能需時數分鐘。
- 插圖可能與實際情況有差異。
- 您電視的 OSD（螢幕顯示）可能與此手冊中顯示的內容略有不同。
- 可用的功能表及選項可能與您使用的輸入來源或產品型號有所不同。
- 新功能或將添加至此電視。
- 產品隨附的部件視乎型號而可能有所不同。
- 本手冊的產品規格或內容或會因產品功能升級而隨時變更，恕不另行通知。
- 為了獲得最好的連接效果，HDMI 纜線和 USB 裝置接頭厚度應少於 10 毫米，寬度應少於 18 毫米。如果 USB 纜線或 USB 記憶卡與您的電視的 USB 端口尺寸不符，請使用支援 USB 2.0 的延長線。



*A ≤ 10 毫米

*B ≤ 18 毫米

- 使用附有 HDMI 標誌的獲認證的纜線。
- 如您並非使用獲認證的纜線，可能無法於螢幕顯示畫面，或發生連接錯誤。
- 建議的 HDMI 纜線類型（3m 或以下）
 - 高速 HDMI®/TM 纜線
 - 設有 Ethernet 的高速 HDMI®/TM 纜線



- 請勿使用任何未經批准部件，以確保安全和產品壽命。
- 因使用未經批准物品而造成的任何損壞或傷害並不包括在保修範圍內。
- 某些型號的屏幕上，像有一層薄膜。它實際上是屏幕的一部分，請勿移除。
- 確保擰乾布上多餘的水分及清潔劑。
- 切勿直接在電視螢幕上噴水或清潔劑。
- 請只在乾布上噴上適度的水或清潔劑以擦拭螢幕。

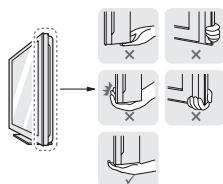
抬起與移動電視

不論任何類型及大小，抬起或移動電視時，請閱讀下文，確保安全搬運，以防電視刮花或受損。

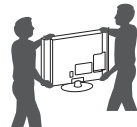
- 建議以包裝箱或連同電視原有的包裝材料移動電視。
- 移動或抬起電視前，中斷電源線和所有纜線的連接。
- 當握住電視時螢幕應面向外側以避免損壞。



- 握穩電視的頂部和底部。確保不要握住透明部分、喇叭或喇叭排孔區域。



- 大型電視需最少二人共同運送。
- 使用人手搬運電視時，請根據以下圖示握住電視。



- 搬運電視時，請勿搖動或令電視受過度震動。
- 搬運電視時，保持電視直立，切勿轉向電視的側面，或向左方或右方傾斜電視。
- 請勿過份用力，否則可能導致外框底座屈曲 / 折彎，會損壞螢幕。
- 操作電視時，請勿損壞凸起的按鈕。



- 避免時常點按畫面，否則會導致畫面受損。
- 請勿握住纜線整理器移動電視，因其可能斷裂而導致受傷及電視損壞。

另外購買

另購項目可因改善品質而隨時變更或修改，恕不另行通知。如要購買這些項目，請聯絡經銷商。這些裝置僅配合某些型號使用。

此等裝置的名稱和設計會因功能更新，出廠情況或政策而有所改變。

(視乎型號而定)

AN-MR650A

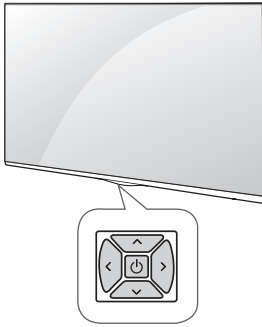
神奇遙控器

使用按鈕

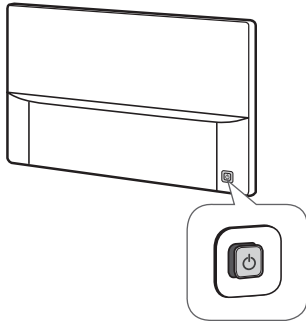
(視乎型號而定)

只需使用按鈕，便可輕易地控制電視。

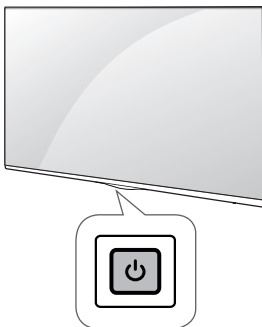
(A 型)



(B 型)



(C 型)



基本功能

(A/B 型)

		開機 (按一下) 關機 ¹ (按住)
		調校音量
		調校節目

(C 型)

	開機 (按一下) 關機 ¹ (按住) 選單控制 (按下 ²) 選單選擇 (按住 ³)
--	--

1 所有操作中的應用程式將會關閉，令正在進行的所有錄影將會停止。

2 您可以在電視開啟時按下按鈕，以存取及調整選單。

3 當您存取調整選單時便可使用這功能。

調整功能表

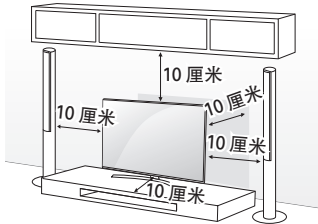
當電視開啟時，按一下按鈕。您可透過按鍵調整選單上的各個項目。(視乎型號而定)

	關閉電源。
	進入設定目錄。
	清除所有畫面顯示並返回電視檢視。
	改更輸入來源。
	捲動已儲存的節目。
	調整音量。

安裝到桌面

(此功能不是所有型號都適用)

- 1 將電視機抬起並擺放在桌子上，保存機身垂直方向。
 - 與牆壁保留最少 10 厘米空間以保持空氣流通。



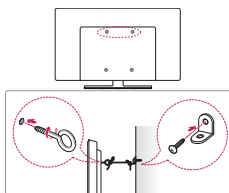
- 2 將電源線連接至牆上電源插座。



- 請勿將電視置於發熱源附近，因此可能引發火災或其他損害。
- 在組裝產品時，請勿於螺絲零件處使用油或潤滑劑等外來物質。（這樣可能會導致產品損壞。）

安全地將電視安裝到牆壁上

(此功能不是所有型號都適用)



- 1 在電視背面插入並擰緊環首螺絲或固定片和螺絲。
 - 如果在環首螺絲位置中插入了螺絲，請先將這些螺絲取出。
- 2 用螺絲將固定片安裝到牆上。
將掛牆架的位置對準電視背面的環形螺絲。
- 3 以堅固繩索將環形螺絲及掛牆架連接。確保繩索與平面保持水平。

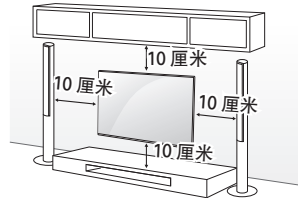


- 確保孩童不要攀附於電視上。

- 使用堅固平臺或矮櫃以穩固承托電視。
- 掛牆架、螺絲及繩索需另行購買。您可從本地經銷商取得其他配件。

安裝在牆上

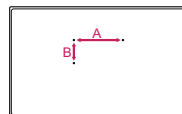
將選購的掛牆架小心安裝在電視後方，再將掛牆架安裝在與地面垂直的堅固牆壁上。將電視安裝在其他建築物料時，請聯絡合資格的人員。LG 建議應由合資格的專業安裝人員進行掛牆安裝。建議使用 LG 掛牆架。LG 掛牆架調整容易，連接纜線亦非常方便。如不使用 LG 掛牆架，請使用能將裝置穩固於牆上並有足夠空間連接外部裝置的掛牆架。如使用無法調整的支架，請將支架掛牆。先將纜線連接至電視，再將電視放到支架上。



確保使用符合 VESA 標準的螺絲及掛牆底座托架。掛牆底座零件的標準尺寸如下表所述。

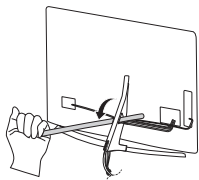
另外購買（掛牆架）

型號	43UJ63**	49/55UJ63**
	43UJ65**	49/55UJ65**
	43UJ75**	49/55UJ75**
		49/55SJ80**
		55SJ85**
VESA (A x B)	200 x 200	300 x 300
標準螺絲	M6	M6
螺絲數目	4	4
掛牆架	LSW240B MSW240	LSW350B MSW240
型號	60UJ65**	75UJ65**
	65UJ75**	75/86SJ95**
	65SJ85**	
VESA (A x B)	300 x 300	600 x 400
標準螺絲	M6	M8
螺絲數目	4	4
掛牆架	LSW350B	LSW640B
型號	55/65SJ95**	
VESA (A x B)	300 x 200	
標準螺絲	M6	
螺絲數目	4	
掛牆架	OTW420B	

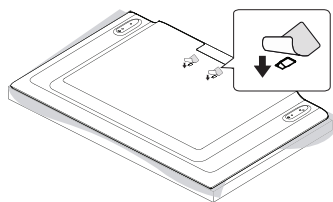
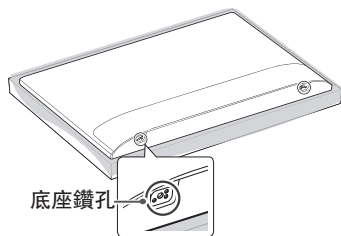




- 將電視安裝於掛牆架前需反方向轉動底座以將之移除。
- 切勿使用鋒利硬物來拆除纜線保護蓋，以免損壞纜線或機身，及造成人身傷害。（視乎型號而定）



- 如要使用支架掛牆擺放，我們建議您使用膠紙貼在鑽孔上，避免灰塵和昆蟲進入孔內。（視乎型號而定）



連線（注意事項）

將不同的外置裝置連接至電視，並切換輸入模式以選取外置裝置。有關外置裝置連接的詳情，請參閱個別裝置隨附的手冊。

可用的外置裝置為：HD 接收器、DVD 播放器、VCR、音效系統、USB 儲存裝置、電腦、遊戲裝置及其他外置裝置。

- 外置裝置連接視乎型號而有所不同。
- 不論電視連接埠順序為何，連接外部裝置至電視。
- 如果您在 DVD 錄影機或 VCR 錄製電視節目，請確保電視訊號輸入纜線已連接電視及 DVD 錄影機或 VCR。有關錄影的詳情，請參閱連接裝置隨附的手冊。
- 有關操作說明，請參閱外部裝置手冊。
- 如果您將遊戲裝置連接至電視，使用遊戲裝置隨附的纜線。
- 於電腦模式，可能產生由解像度、垂直格式、對比度或亮度引致的雜音。如出現雜音，將電腦輸出變更為其他解像度或將刷新率變更為其他頻率、或於 {影像} 功能表中調整亮度和對比度，直至影像變為清晰。
- 於電腦模式，部份解像度設定可能未能正常運作，視乎顯示卡而定。
- 某些 USB 集線器可能不能運作。如連接至 USB 集線器的 USB 裝置未能被探測，可直接將裝置連接至於電視上的 USB 端口。
- 如您在電腦上播放 Ultra HD 內容，視乎電腦性能，視訊或音訊可能會間歇性中斷。（視乎型號而定）
- 建議使用 CAT 7 網絡線連接區域網絡（LAN）。

天線連接

使用 RF 線（75 Ω）將電視連接至牆壁天線插座。

- 如使用兩部電視以上，使用訊號分線器。
- 如畫面品質惡劣，正確安裝訊號放大器以改善圖像品質。
- 如有連接天線，但畫面品質惡劣，嘗試以正確方向重新對準天線。
- 天線及轉換器並不提供。
- 支援的數碼電視音效：MPEG、Dolby Digital、Dolby Digital Plus、HE-AAC
- 由於相關標準尚未確認，此電視不能直接接收超高清（3840 x 2160 像素）廣播。

其他連接

將電視連接至外部裝置。為達到最佳圖片及音訊質素，請使用 HDMI 纜線將外置裝置及電視連接。不提供部份獨立纜線。

（視乎型號而定）

-  →  →  → {一般} → {HDMI ULTRA HD Deep Color}
 - 開：支援 4K @ 50/60 Hz（4:4:4、4:2:2、4:2:0）
 - 關：支援 4K @ 50/60 Hz 8 位元（4:2:0）
- 如果連接到輸入的設備也支援 {ULTRA HD Deep Color}，您的圖像會更清晰。不過，如果設備不支援，可能無法正常運作。若是該狀況，請將設備連接到不同 HDMI 連接埠，或者將電視的 {HDMI ULTRA HD Deep Color} 設定變更為「關閉」。
- 支援的 HDMI 音效格式：DTS（44.1 kHz, 48 kHz），Dolby Digital / Dolby Digital Plus（32 kHz, 44.1 kHz, 48 kHz），PCM（32 kHz, 44.1 kHz, 48 kHz, 96 kHz, 192 kHz）
（視乎型號而定）

遙控器

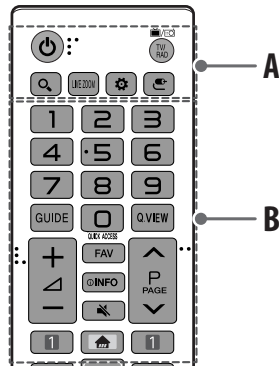
（因應產品型號或地區，部分按鈕功能和服務可能無法提供。）

本手冊的描述基於遙控器的按鍵而定。請仔細閱讀本手冊並正確使用電視。如需安裝電池，打開電池蓋，更換電池（1.5 V AAA）時配對電池格內的 ⊕ 及 ⊖ 端標籤，然後關上電池蓋。如要移除電池，以相反步驟執行動作。



- 在某些國家或收看模擬廣播時，部份按鍵可能無法使用。


確保將遙控器指向電視的遙控器感應器。




A

（電源）開啟或關閉電視。

TV/RAD /EJECT  選擇收音機、電視和數碼電視節目。

（搜尋）搜尋電視節目、電影及其他影片等內容，或在搜索欄中輸入字元以進行網上搜尋。

LIVE ZOOM  放大指定畫面即可進行全螢幕觀看。

（快速設定）進入快速設定。

（輸入）更改輸入來源。

B

數字鍵 輸入數字

GUIDE顯示節目指南。

Q.VIEW返回之前收看的節目。

QUICK ACCESS* 您可以使用相對應的數字按鈕存取應用程式或觀看電視。

+/- 調整音量。

FAV存取最喜愛的節目清單。

○INFO檢視目前節目及畫面的資訊。

🔇 (靜音) 打開或關閉聲音。

- 按住 🔇 (靜音) 鍵以顯示 {協助工具} 選單。

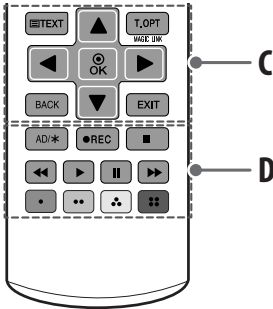
⏮️⏪ 捲動已儲存的節目。

⏮️PAGE ⏩ 移至上一屏幕或下一屏幕。

🏠 (主頁) 進用功能表。

- 長按著 🏠 (主頁) 鍵可顯示使用記錄。

1️⃣ 串流服務按鈕 連接至影片串流服務。



C

電視文字按鍵 (☐TEXT, T.OPT) 此等按鍵用於電視文字廣播。

MAGIC LINK* 提供與您目前觀看節目相關的內容。

導航按鍵 (上/下/左/右) 滾動閱覽選單或選項。

👉 OK 選擇選單或選項並確認輸入。

BACK返回至上一層。

EXIT清除所有畫面顯示並返回電視檢視。

D

AD/*按下 AD 按鈕，將啟用音效說明功能。

●REC開始錄製和顯示錄製目錄。(僅限 Time Machine Ready 支援型號)

⏮️, ⏪, ⏩, ⏭, ⏮️ 媒體內容控制按鍵。

🔇, 🔇, 🔇, 🔇 訪問某些選單中的特殊功能。

* 要使用按鈕，請按住超過 3 秒。

神奇遙控器

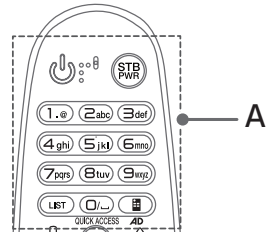
(因應產品型號或地區，部分按鈕功能和服務可能無法提供。)

當顯示“神奇遙控器電池電量低，請更換電池。”的訊息時，請更換電池。

如需安裝電池，打開電池蓋，更換電池 (1.5 V AA) 時配對電池格內的 ⊕ 及 ⊖ 端標籤，然後關上電池蓋。確保將遙控器指向電視機上的神奇遙控器感應器。如要移除電池，以相反步驟執行動作。



• 在某些國家或收看模擬廣播時，部份按鍵可能無法使用。



A

🔌 (電源) 開啟或關閉電視。

STB PWR 只要將機頂盒新增至電視的通用遙控器便可開啟或關閉機頂盒。

數字鍵 輸入數字。

字母鍵 輸入文字。

LIST進入已儲存節目列表。

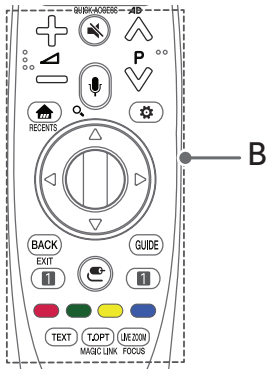
⏪ (空間) 打開屏幕鍵盤上的一個空的空間。

📺 (螢幕遙控) 顯示螢幕遙控。

- 存取通用控制功能表。

AD* 將啟用音效說明功能。

QUICK ACCESS* 您可以使用相對應的數字按鈕存取應用程式或觀看電視。



BACK返回至上一畫面。

EXIT* 清除所有畫面顯示並返回電視檢視。

GUIDE顯示節目指南。

☺ (輸入) 更改輸入來源。

- 按住 ☺ (輸入) 按鈕將顯示功能表，讓您選取已連接至電視的外部裝置。

1 串流服務按鈕 連接至影片串流服務。

●, ●, ●, ● 訪問某些選單中的特殊功能。

電視文字按鍵 (TEXT, T.OPT) 此等按鍵用於電視文字廣播。

MAGIC LINK* 提供與您目前觀看節目相關的內容。

LIVE ZOOM放大指定畫面即可進行全螢幕觀看。

FOCUS* 您可放大遙控器指向的畫面位置。

* 要使用按鈕，請按住超過 3 秒。

B

⊕ ⊖ 調整音量。

🔇 (靜音) 打開或關閉聲音。

- 按住 🔇 (靜音) 鍵以顯示 {協助工具} 選單。

🗣️ (語音辨識)

使用語音辨識功能時需要網絡連接。

1 按下語音辨識按鈕。

2 在語音顯示視窗顯示於電視螢幕時說話。

🔍* (搜尋) 搜尋電視節目、電影及其他影片等內容，或在搜索欄中輸入字元以進行網上搜尋。

⏮️ P ⏭️ 捲動已儲存的節目。

🏠 (主頁) 進用功能表。

RECENTS* 顯示歷史記錄。

⚙️ (快速設定) 進入快速設定。

- 按住 ⚙️ (快速設定) 按鈕顯示 {所有設定} 選單。

⌚ 滾輪 (確認) 按下滾輪按鈕的中央以選擇功能表。您可使用滾輪鍵轉台。

導航按鍵 ⏮️ ⏭️ ⏪️ ⏩️ (上/下/左/右) 按上、下、左或右按鈕以捲動功能表。如您按下 ⏮️ ⏭️ ⏪️ ⏩️ 按鈕時同時使用游標，游標將於螢幕消失，神奇遙控器將以一般遙控器運作。如要再次於螢幕上顯示游標，向左及右搖一搖神奇遙控器。

註冊神奇遙控器

如何註冊神奇遙控器

如要使用神奇遙控器，首先與電視進行配對。

- 1 將電池放入神奇遙控器並開啟電視。
- 2 將神奇遙控器指向電視，然後按遙控器上的 ⌚ 滾輪 (確認)。
 - 如電視無法註冊神奇遙控器，請關閉電視然後重新開啟，再試一次。

如何註銷神奇遙控器

同時按住 BACK及 🏠 (主頁) 按鈕 5 秒，以取消神奇遙控器與電視的配對。

- 按住按 GUIDE鈕將讓您取消並立即重新註冊神奇遙控器。

授權

受支援的授權因型號而有所不同。更多有關授權的詳細資料，請瀏覽 www.lg.com。

(只限 UJ75**, SJ80**, SJ85**, SJ95**)

 DOLBY VISION™

 DOLBY AUDIO™

 HDMI™
HIGH-DEFINITION MULTIMEDIA INTERFACE

 dts-HD™

注意：開放來源程式碼軟件

若要獲取此產品所包含的 GPL、LGPL、MPL 來源程式碼和其他開放來源程式碼認證，請瀏覽 <http://opensource.lge.com>。

除了來源程式碼，所有涉及到的授權條款、免責聲明和版權聲明可供下載。

LG Electronics 亦可以透過收費 CD-ROM 提供開放來源程式碼，費用包括 CD-ROM 成本（例如媒體成本、運費以及處理費），您可透過 opensource@lge.com 索取。此服務由購買產品日期起計算三年內有效。

外置控制裝置設置

(視乎型號而定)

要獲取有關外置控制裝置的設定資訊，請瀏覽 www.lg.com。

疑難排解

- 無法使用遙控器控制電視。
 - 請檢查產品上的遙控器感應器，然後再試一次。
 - 請檢查產品和遙控器之間是否有任何障礙物。
 - 請檢查電池是否仍可使用，且已正確安裝 (⊕ 對 ⊕, ⊖ 對 ⊖)。
- 沒有畫面顯示或沒有聲音。
 - 請檢查產品是否已開機。
 - 請檢查電線是否已連接至牆上插頭。
 - 請連接其他產品，確認牆上插頭是否有問題。
- 電視突然關機。
 - 檢查電源控制設定。電源供應可能中斷。
 - 在{定時}設定中檢查 {睡眠時間設定} 或 {定時器電源關閉} 是否已啟動。
 - 如果在電視開機時沒有訊號，15 分鐘後若無任何動作，電視就會自動關機。
- 連接至電腦 (HDMI) 時顯示 {無訊號} 或 {無效的格式}。
 - 使用遙控器關閉/開啟電視。
 - 重新連接 HDMI 纜線。
 - 在開啟電視的情況下重新啟動電腦。

異常顯示情況

- 如接觸產品時感覺冰冷，於開啟時可能出現「跳線」情況。此為正常情況，產品並無異常。
- 本螢幕面板是擁有數百萬像素的先進產品。微細黑點及/或高亮彩色光點（紅色、藍或綠色）可能以每百萬分一單位出現於顯示面板上。此並不代表非正常運作及並不影響產品之性能及其可靠性。
此現象亦會於第三方產品出現並不接受更換或退款。
- 於不同位置（左/右/上/下方）觀看時可能感受到面板不同亮度及顏色顯示。
此現象的出現乃顯示面板的特性。此與產品性能無關，並其運作正常。
- 長時間顯示靜態圖像可能會引致殘像。請避免長時間在電視螢幕顯示固定畫面。

產生聲音

- 「咔嚓」斷裂雜音：於觀看或關閉電視時出現的斷裂雜音乃因溫度與濕度而導致塑料的熱收縮所產生。此等雜音於遇熱膨脹之產品較為常見。
- 電路嗡嗡聲/面板叭噪：低水平雜音乃由高速切換電路以產生大量電流令產品運作時發出。其因應產品會有所不同。
雜音之產生並不影響產品的性能及可靠性。

規格

- 能源標籤上標明的每年能源消耗是根據 IEC 62087 及香港能源效益標籤計劃 (EELS) 來計算 (根據不同的型號而定)。
- 實際的能源消耗取決於使用環境 (觀看的內容、電視設定等) 而定。

無線模組規格

- 由於每個國家的波段頻道有所不同，用戶無法更改或調整操作頻率。本產品配置之頻率為區域頻率表內。
- 為用戶着想，建議本裝置安裝及使用時，應最少離用戶身體 20 厘米。
(只限 UJ65**, UJ75**, SJ80**, SJ85**, SJ95**)

無線 LAN 模組 (LGSBWAC72) 規格	
無線 LAN (IEEE 802.11a/b/g/n/ac)	
頻率範圍	輸出功率 (最大)
2400 轉 2483.5 MHz	14 dBm
5150 轉 5250 MHz	16.5 dBm
5725 轉 5850 MHz	11.5 dBm
Bluetooth	
頻率範圍	輸出功率 (最大)
2400 轉 2483.5 MHz	8.5 dBm

(只限 UJ63**)

無線 LAN 模組 (LGSWFAC71) 規格	
無線 LAN (IEEE 802.11a/b/g/n/ac)	
頻率範圍	輸出功率 (最大)
2400 轉 2483.5 MHz	13 dBm
5150 轉 5250 MHz	16.5 dBm
5725 轉 5850 MHz	10 dBm

環境條件	操作溫度	0 °C 至 40 °C
	操作濕度	低於 80 %
	儲存溫度	-20 °C 至 60 °C
	儲存濕度	低於 85 %

	數碼訊號	類比訊號
電視制式	DTMB	PAL-I/DK, NTSC-M
節目範圍	DTMB: 21~69	PAL-DK: VHF/UHF 1~69, Cable: 1~47 PAL-I: VHF/UHF 1~69, Cable: 1~47 NTSC M: VHF/UHF 2~78, Cable: 1~71
外置天線 抗阻		75 Ω



記下電視的型號和序列號。
參考後蓋上的標籤，當您要求任何服務時將此資訊告之經銷商。

型號 _____

序號 _____



OWNER'S MANUAL

Safety and Reference

LED TV*

* LG LED TVs are LCD TVs with LED backlighting.

Please read this manual carefully before operating your TV and retain it for future reference.

www.lg.com

Printed in Korea

Copyright © 2017 LG Electronics Inc. All Rights Reserved.

Warning! Safety instructions



CAUTION : TO REDUCE THE RISK OF ELECTRIC SHOCK, DO NOT REMOVE COVER (OR BACK). NO USER-SERVICEABLE PARTS INSIDE. REFER TO QUALIFIED SERVICE PERSONNEL.



This symbol is intended to alert the user to the presence of uninsulated "dangerous voltage" within the product's enclosure that may be of sufficient magnitude to constitute a risk of electric shock to persons.



This symbol is intended to alert the user to the presence of important operating and maintenance (servicing) instructions in the literature accompanying the appliance.

WARNING : TO REDUCE THE RISK OF FIRE AND ELECTRIC SHOCK, DO NOT EXPOSE THIS PRODUCT TO RAIN OR MOISTURE.

- Clean only with dry cloth. Do not place the TV and/or remote control in the following environments:
 - A location exposed to direct sunlight
 - An area with high humidity such as a bathroom
 - Near any heat source such as stoves and other devices that produce heat
 - Near kitchen counters or humidifiers where they can easily be exposed to steam or oil
 - An area exposed to rain or wind
 - Near containers of water such as vases

Otherwise, this may result in fire, electric shock, malfunction or product deformation.

- Do not place the product where it might be exposed to dust. This may cause a fire hazard.
- Mains Plug is the TV connecting/disconnecting device to AC mains electric supply. This plug must remain readily attached and operable when TV is in use.
- Do not touch the power plug with wet hands. Additionally, if the cord pin is wet or covered with dust, dry the power plug completely or wipe dust off. You may be electrocuted due to excess moisture.
- Make sure to connect Mains cable to compliant AC mains socket with Grounded earth pin. (Except for devices which are not grounded on earth.) Otherwise possibility you may be electrocuted or injured.
- Insert power cable plug completely into wall socket otherwise if not secured completely into socket, fire ignition may break out.

- Ensure the power cord does not come into contact with hot objects such as a heater. This may cause a fire or an electric shock hazard.
- Do not place a heavy object, or the product itself, on power cables. Otherwise, this may result in fire or electric shock.
- Bend antenna cable between inside and outside building to prevent rain from flowing in. This may cause water damaged inside the Product and could give an electric shock.
- When mounting TV onto wall make sure to neatly install and isolate cabling from rear of TV as to not create possibility of electric shock / fire hazard.
- Do not plug too many electrical devices into a single multiple electrical outlet. Otherwise, this may result in fire due to over-heating.
- Do not drop the product or let it fall over when connecting external devices. Otherwise, this may result in injury or damage to the product.
- Keep the anti-moisture packing material or vinyl packing out of the reach of children. Anti-moisture material is harmful if swallowed. If swallowed by mistake, force the patient to vomit and visit the nearest hospital. Additionally, vinyl packing can cause suffocation. Keep it out of the reach of children.
- Do not let your children climb or cling onto the TV. Otherwise, the TV may fall over, which may cause serious injury.
- Dispose of used batteries carefully to ensure that a small child does not consume them. Please seek Doctor- Medical Attention immediately if child consumes batteries.
- Do not insert any metal objects/conductors (like a metal chopstick/cutlery/screwdriver) between power cable plug and Wall Socket. Additionally, do not touch the power cable right after plugging into the wall. You may be electrocuted.
- Do not put or store inflammable substances near the product. There is a danger of combustion/explosion or fire due to careless handling of the inflammable substances.
- Do not drop metallic objects such as coins, hair pins, chopsticks or wire into the product, or inflammable objects such as paper and matches. Children must pay particular attention. Electrical shock, fire or injury can occur. If a foreign object is dropped into the product, unplug the power cord and contact the service centre.
- Do not spray water on the product or scrub with an inflammable substance (thinner or benzene). Fire or electric shock accident can occur.
- Do not allow any impact, shock or any objects to fall into the unit, and do not drop anything onto the screen. You may be injured or the product can be damaged.
- Never touch this product or antenna during a thunder or lightning storm. You may be electrocuted.
- Never touch the wall outlet when there is leakage of gas, open the windows and ventilate. It may cause a fire or a burn by a spark.

- Do not disassemble, repair or modify the product at your own discretion. Fire or electric shock accident can occur. Contact the service centre for check, calibration or repair.
- If any of the following occur, unplug the product immediately and contact your local service centre.
 - The product has been damaged
 - Foreign objects have entered the product
 - The product produced smoke or a strange smell
- This may result in fire or electric shock.
- Unplug the TV from AC mains wall socket if you do not intend to use the TV for a long period of time. Accumulated dust can cause fire hazard and insulation deterioration can cause electric leakage/shock/fire.
- Apparatus shall not be exposed to dripping or splashing and no objects filled with liquids, such as vases, shall be placed on the apparatus.
- Do not install this product on a wall if it could be exposed to oil or oil mist. This may damage the product and cause it to fall.
- If water or another substance enters the product (like a AC adapter, power cord, TV), disconnect the power cord and contact the service centre immediately.
Otherwise, this may result in fire or electric shock.
- Only use an authorized AC adapter and power cord approved by LG Electronics. Otherwise, this may result in fire, electric shock, malfunction or product deformation.
- Never Disassemble the AC adapter or power cord. This may result in fire or electric shock.
- Handle the adapter carefully to avoid dropping or striking it. An impact could damage the adapter.
- Make sure the power cord is connected securely to the power plug on the TV.
- Install the product where no radio wave occurs.
- There should be enough distance between an outside antenna and power lines to keep the former from touching the latter even when the antenna falls. This may cause an electric shock.
- Do not install the product on places such as unstable shelves or inclined surfaces. Also avoid places where there is vibration or where the product cannot be fully supported. Otherwise, the product may fall or flip over, which may cause injury or damage to the product.
- If you install the TV on a stand, you need to take actions to prevent the product from overturning. Otherwise, the product may fall over, which may cause injury.
- If you intend to mount the product to a wall, attach VESA standard mounting interface (optional parts) to the back of the product. When you install the set to use the wall mounting bracket (optional parts), fix it carefully so as not to drop.
- Only use the attachments / accessories specified by the manufacturer.
- When installing the antenna, consult with a qualified service technician. If not installed by a qualified technician, this may create a fire hazard or an electric shock hazard.
- We recommend that you maintain a distance of at least 2 to 7 times the diagonal screen size when watching TV. If you watch TV for a long period of time, this may cause blurred vision.
- Only use the specified type of battery. This could cause damage to the remote control.
- Do not mix new batteries with old batteries. This may cause the batteries to overheat and leak.
- Batteries should not be exposed to excessive heat. For example, keep away from direct Sunlight, open fireplace and electric heaters.
- Signal from Remote Control can be interrupted due to external/ internal lighting eg Sunlight, fluorescent lighting. If this occurs turn off lighting or darken viewing area.
- When connecting external devices such as video game consoles, make sure the connecting cables are long enough. Otherwise, the product may fall over, which may cause injury or damage the product.
- Do not turn the product On/Off by plugging-in or unplugging the power plug to the wall outlet. (Do not use the power plug for switch.) It may cause mechanical failure or could give an electric shock.
- Please follow the installation instructions below to prevent the product from overheating.
 - The distance between the product and the wall should be more than 10 cm.
 - Do not install the product in a place with no ventilation (e.g., on a bookshelf or in a cupboard).
 - Do not install the product on a carpet or cushion.
 - Make sure the air vent is not blocked by a tablecloth or curtain. This may result in fire.
- Take care not to touch the ventilation openings when watching the TV for long periods as the ventilation openings may become hot. This does not affect the operation or performance of the product.
- Periodically examine the cord of your appliance, and if its appearance indicates damage or deterioration, unplug it, discontinue use of the appliance, and have the cord replaced with an exact replacement part by an authorized servicer.
- Prevent dust collecting on the power plug pins or outlet. This may cause a fire hazard.
- Protect the power cord from physical or mechanical abuse, such as being twisted, kinked, pinched, closed in a door, or walked upon. Pay particular attention to plugs, wall outlets, and the point where the cord exits the appliance.
- Do not press strongly upon the panel with a hand or sharp object such as nail, pencil or pen, or make a scratch on it, as it may cause damage to screen.
- Avoid touching the screen or holding your finger(s) against it for long periods of time. Doing so may produce some temporary or permanent distortion/damage to screen.

- As long as this unit is connected to the AC wall outlet, it is not disconnected from the AC power source even if you turn off this unit by SWITCH.
- When unplugging the cable, grab the plug and unplug it, by pulling at the plug.
- Don't pull at the cord to unplug the power cord from the power board, as this could be hazardous.
- When moving the product, make sure you turn the power off first. Then, unplug the power cables, antenna cables and all connecting cables.
The TV set or power cord may be damaged, which may create a fire hazard or cause electric shock.
- When moving or unpacking the product, work in pairs because the product is heavy. Otherwise, this may result in injury.
- Refer all servicing to qualified service personnel. Servicing is required when the apparatus has been damaged in any way, such as power supply cord or plug is damaged, liquid has been spilled or objects have fallen into the apparatus, the apparatus has been exposed to rain or moisture, does not operate normally, or has been dropped.
- Do not use high voltage electrical goods near the TV(e.g. electric mosquito-swatter). This may result in product malfunction.
- When cleaning the product and its components, unplug the power first and wipe it with a soft cloth. Applying excessive force may cause scratches or discolouration. Do not spray with water or wipe with a wet cloth. Do not clean your TV with chemicals including glass cleaner, any type of air freshener, insecticide, lubricants, wax (car, industrial), abrasive, thinner, benzene, alcohol etc., which can damage the product and or its panel. Otherwise, this may result in fire, electric shock or product damage (deformation, corrosion or breakage).






WARNING!

Never place a television set in an unstable location. A television set may fall, causing serious personal injury or death. Many injuries, particularly to children, can be avoided by taking simple precautions such as:

- Using cabinets or stands recommended by the manufacturer of the television set.
- Only using furniture that can safely support the television set.
- Ensuring the television set is not overhanging the edge of the supporting furniture.
- Not placing the television set on tall furniture (for example, cupboards or bookcases) without anchoring both the furniture and the television set to a suitable support.
- Not placing the television set on cloth or other materials that may be located between the television set and supporting furniture.
- Educating children about the dangers of climbing on furniture to reach the television set or its controls.

If your existing television set is being retained and relocated, the same considerations as above should be applied.

Symbols

	Refers to alternating current(AC).
	Refers to direct current(DC).
	Refers to class II equipment.
	Refers to stand-by.
	Refer to "ON" (power).
	Refers to dangerous voltage.

Preparing

- If the TV is turned on for the first time after it was shipped from the factory, initialization of the TV may take a few minutes.
- Image shown may differ from your TV.
- Your TV's OSD (On Screen Display) may differ slightly from that shown in this manual.
- The available menus and options may differ from the input source or product model that you are using.
- New features may be added to this TV in the future.
- The items supplied with your product may vary depending on the model.
- Product specifications or contents of this manual may be changed without prior notice due to upgrade of product functions.
- For an optimal connection, HDMI cables and USB devices should have bezels less than 10 mm thick and 18 mm width. Use an extension cable that supports USB 2.0 if the USB cable or USB memory stick does not fit into your TV's USB port.



- Use a certified cable with the HDMI logo attached.
- If you do not use a certified HDMI cable, the screen may not display or a connection error may occur.
- Recommended HDMI Cable Types (3m or less)
 - High-Speed HDMI^{®/TM} cable
 - High-Speed HDMI^{®/TM} cable with Ethernet



- Do not use any unapproved items to ensure the safety and product's lifespan.
- Any damages or injuries by using unapproved items are not covered by the warranty.
- Some models appear to have a thin film on the screen. It is actually part of the screen; do not remove it.
- Make sure to wring any excess water or cleaner from the cloth.
- Do not spray water or cleaner directly onto the TV screen.
- Make sure to spray just enough of water or cleaner onto a dry cloth to wipe the screen.

Separate purchase

Separate purchase items can be changed or modified for quality improvement without any notification. Contact your dealer to buy these items. These devices only work with certain models.

The model name or design may be changed depending on the upgrade of product functions, manufacturer's circumstances or policies.

(Depending on model)

AN-MR650A

Magic Remote

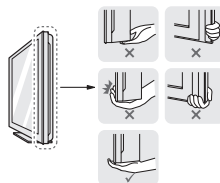
Lifting and moving the TV

Please note the following advice to prevent the TV from being scratched or damaged and for safe transportation regardless of its type and size.

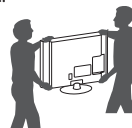
- It is recommended to move the TV in the box or packing material that the TV originally came in.
- Before moving or lifting the TV, disconnect the power cord and all cables.
- When holding the TV, the screen should face away from you to avoid damage.



- Hold the top and bottom of the TV frame firmly. Make sure not to hold the transparent part, speaker, or speaker grill area.



- When transporting a large TV, there should be at least 2 people.
- When transporting the TV by hand, hold the TV as shown in the following illustration.



- When transporting the TV, do not expose the TV to jolts or excessive vibration.
- When transporting the TV, keep the TV upright, never turn the TV on its side or tilt towards the left or right.
- Do not apply excessive pressure to cause flexing /bending of frame chassis as it may damage screen.
- When handling the TV, be careful not to damage the protruding buttons.



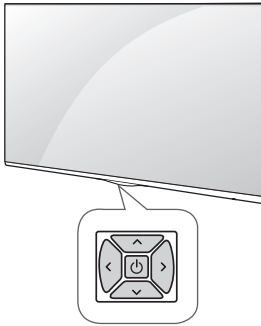
- Avoid touching the screen at all times, as this may result in damage to the screen.
- Do not move the TV by holding the cable holders, as the cable holders may break, and injuries and damage to the TV may occur.

Using the button

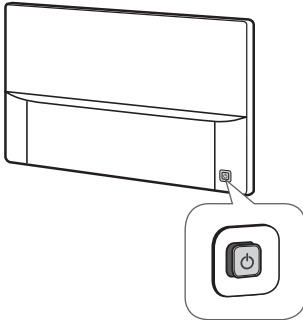
(Depending on model)

You can simply operate the TV functions, using the button.

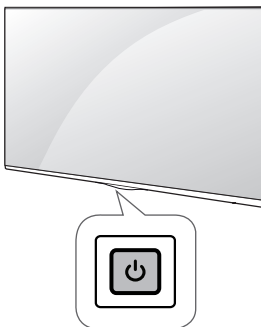
(A Type)



(B Type)



(C Type)



Basic Functions

(A/B Type)

		Power On (Press) Power Off ¹ (Press and Hold)
		Volume Control
		Programmes Control

(C Type)

	Power On (Press) Power Off ¹ (Press and Hold) Menu control (Press ²) Menu selection (Press and Hold ³)
--	--

1 All running apps will close, and any recording in progress will stop.

2 You can access and adjust the menu by pressing the button when TV is on.

3 You can use the function when you access menu control.

Adjusting the Menu

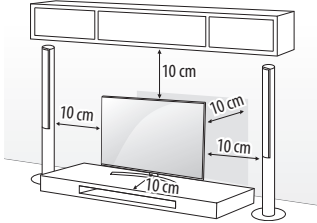
When the TV is turned on, press the button one time. You can adjust the Menu items using the buttons. (Depending on model)

	Turns the power off.
	Accesses the setting menu.
	Clears on-screen displays and returns to TV viewing.
	Changes the input source.
	Scrolls through the saved programmes.
	Adjusts the volume level.

Mounting on a table

(This feature is not available for all models.)

- Lift and tilt the TV into its upright position on a table.
 - Leave a 10 cm (minimum) space from the wall for proper ventilation.



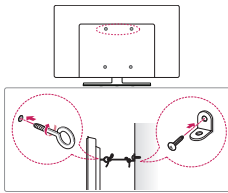
- Connect the power cord to a wall outlet.



- Do not place the TV near or on sources of heat, as this may result in fire or other damage.
- Do not apply foreign substances (oils, lubricants, etc.) to the screw parts when assembling the product. (Doing so may damage the product.)

Securing the TV to a wall

(This feature is not available for all models.)



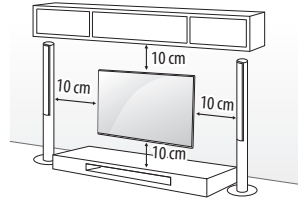
- Insert and tighten the eye-bolts, or TV brackets and bolts on the back of the TV.
 - If there are bolts inserted at the eye-bolts position, remove the bolts first.
- Mount the wall brackets with the bolts to the wall. Match the location of the wall bracket and the eye-bolts on the rear of the TV.
- Connect the eye-bolts and wall brackets tightly with a sturdy rope. Make sure to keep the rope horizontal with the flat surface.



- Make sure that children do not climb on or hang on the TV.
- Use a platform or cabinet that is strong and large enough to support the TV securely.
- Brackets, bolts and ropes are not provided. You can obtain additional accessories from your local dealer.

Mounting on a wall

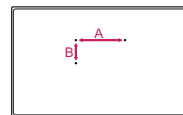
Attach an optional wall mount bracket at the rear of the TV carefully and install the wall mount bracket on a solid wall perpendicular to the floor. When you attach the TV to other building materials, please contact qualified personnel. LG recommends that wall mounting be performed by a qualified professional installer. We recommend the use of LG's wall mount bracket. The LG wall mount is easy to adjust or to connect the cables. When you do not use LG's wall mount bracket, please use a wall mount bracket where the device is adequately secured to the wall with enough space to allow connectivity to external devices. If you are using a non-adjustable mount, attach the mount to the wall. Attach the cables to the TV first, then attach the TV to the mount.



Make sure to use screws and wall mount bracket that meet the VESA standard. Standard dimensions for the wall mount kits are described in the following table.

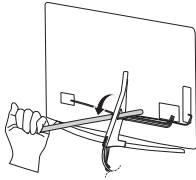
Separate purchase (Wall mounting bracket)

Model	43UJ63** 43UJ65** 43UJ75**	49/55UJ63** 49/55UJ65** 49/55UJ75** 49/55SJ80** 55SJ85**
VESA (A x B)	200 x 200	300 x 300
Standard screw	M6	M6
Number of screws	4	4
Wall mount bracket	LSW240B MSW240	LSW350B MSW240
Model	60UJ65** 65UJ75** 65SJ85**	75UJ65** 75/86SJ95**
VESA (A x B)	300 x 300	600 x 400
Standard screw	M6	M8
Number of screws	4	4
Wall mount bracket	LSW350B	LSW640B
Model	55/65SJ95**	
VESA (A x B)	300 x 200	
Standard screw	M6	
Number of screws	4	
Wall mount bracket	OTW420B	

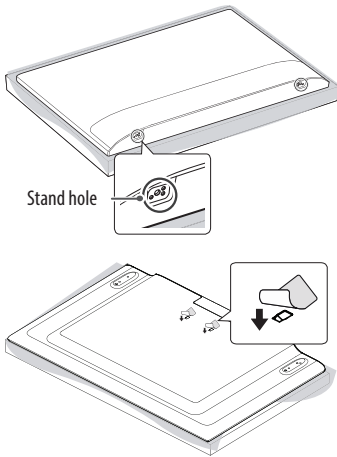




- Remove the stand before installing the TV on a wall mount by performing the stand attachment in reverse.
- Do not use a sharp object when you detached the cable cover. This could damage the cable or the cabinet. It may also cause personal harm. (Depending on model)



- When using the wall mount, it is recommended that you apply a piece of tape over the Stand holes to prevent dust and bugs from entering the holes. (Depending on model)



Connections (notifications)

Connect various external devices to the TV and switch input modes to select an external device. For more information of external device's connection, refer to the manual provided with each device. Available external devices are: HD receivers, DVD players, VCRs, audio systems, USB storage devices, PC, gaming devices, and other external devices.

- The external device connection may differ from the model.
- Connect external devices to the TV regardless of the order of the TV port.
- If you record a TV program on a DVD recorder or VCR, make sure to connect the TV signal input cable to the TV through a DVD recorder or VCR. For more information of recording, refer to the manual provided with the connected device.
- Refer to the external equipment's manual for operating instructions.
- If you connect a gaming device to the TV, use the cable supplied with the gaming device.
- In PC mode, there may be noise associated with the resolution, vertical pattern, contrast or brightness. If noise is present, change the PC output to another resolution, change the refresh rate to another rate or adjust the brightness and contrast on the **Picture** menu until the picture is clear.
- In PC mode, some resolution settings may not work properly depending on the graphics card.
- Some USB Hubs may not work. If a USB device connected using a USB Hub is not detected, connect it to the USB port on the TV directly.
- If Ultra HD content is played on your PC, video or audio may become disrupted intermittently depending on your PC's performance.
- When connecting via a wired LAN, it is recommended to use a CAT 7 cable.

Antenna connection




Connect the TV to a wall antenna socket with an RF cable (75 Ω).

- Use a signal splitter to use more than 2 TVs.
- If the image quality is poor, install a signal amplifier properly to improve the image quality.
- If the image quality is poor with an antenna connected, try to realign the antenna in the correct direction.
- An antenna cable and converter are not supplied.
- Supported DTV Audio: MPEG, Dolby Digital, Dolby Digital Plus, HE-AAC
- This TV cannot receive ULTRA HD (3840 x 2160 pixels) broadcasts directly because the related standards have not been confirmed.

Other connections

Connect your TV to external devices. For the best picture and audio quality, connect the external device and the TV with the HDMI cable. Some separate cable is not provided.

(Depending on model)

-  →  →  → **General** → **HDMI ULTRA HD Deep Colour**
 - On: Support 4K @ 50/60 Hz (4:4:4, 4:2:2, 4:2:0)
 - Off: Support 4K @ 50/60 Hz 8bit (4:2:0)
- If the device connected to Input Port also supports **ULTRA HD Deep Colour**, your picture may be clearer. However, if the device doesn't support it, it may not work properly. In that case, connect the device to a different HDMI port or change the TV's **HDMI ULTRA HD Deep Colour** setting to Off.
- Supported HDMI Audio format: DTS (44.1 kHz, 48 kHz), Dolby Digital / Dolby Digital Plus (32 kHz, 44.1 kHz, 48 kHz), PCM (32 kHz, 44.1 kHz, 48 kHz, 96 kHz, 192 kHz)
(Depending on model)

Remote control

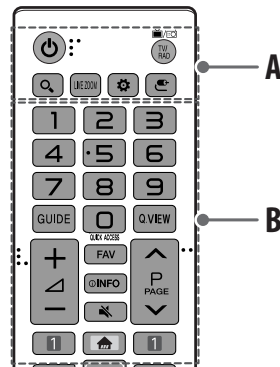
(Some buttons and services may not be provided depending on models or regions.)

The descriptions in this manual are based on the buttons on the remote control. Please read this manual carefully and use the TV correctly. To replace batteries, open the battery cover, replace batteries (1.5 V AAA) matching the ⊕ and ⊖ ends to the label inside the compartment, and close the battery cover. To remove the batteries, perform the installation actions in reverse.



- In Analogue TV and some countries, some remote control buttons may not work.


Make sure to point the remote control toward the remote control sensor on the TV.




A

 **(POWER)** Turns the TV on or off.

TV/RAD   Selects Radio, TV and DTV programme.

 **(SEARCH)** Search for content such as TV programmes, movies and other videos, or perform a web search by entering text in the search bar.

LIVE ZOOM  By zooming in on the selected area, you can view it in full screen.

 **(Q. Settings)** Accesses the quick settings.

 **(INPUT)** Changes the input source.

B

Number buttons Enters numbers.

GUIDE Shows programme guide.

Q.VIEW Returns to the previously viewed programme.

QUICK ACCESS* You can access the application or Live TV using the number buttons corresponding to the features.

+ ▽ — Adjusts the volume level.

FAV Accesses your favourite programme list.

ⓘ **INFO** Views the information of the current programme and screen.

🔇 **(MUTE)** Mutes all sounds.

- Pressing and holding the 🔇 **(MUTE)** button displays the **Accessibility** menu.

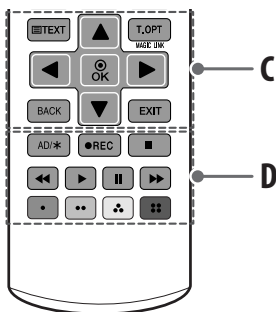
⬆️ **P** ⬆️ Scrolls through the saved programmes.

⬆️ **PAGE** ⬆️ Moves to the previous or next screen.

🏠 **(HOME)** Accesses the Home menu.

- Pressing and holding the 🏠 (Home) button displays all the previous history.

1 **Streaming Service buttons** Connects to the Video Streaming Service.



C

TELETEXT buttons (☒TEXT, T.OPT) These buttons are used for teletext.

MAGIC LINK* Provides content related to the program you are currently watching.

Navigation buttons (up/down/left/right) Scrolls through menus or options.

⊙ **OK** Selects menus or options and confirms your input.

BACK Returns to the previous level.

EXIT Clears on-screen displays and returns to TV viewing.

D

AD/* By pressing AD button, audio descriptions function will be enabled.

● **REC** Starts to record and displays record menu. (Only Time Machine^{ready} supported model)

⏮️ ⏪️ ⏩️ ⏭️ Control buttons for media contents

⬢, ⬢, ⬢, ⬢ These access special functions in some menus.

* To use the button, press and hold for more than 3 seconds.

Magic remote functions

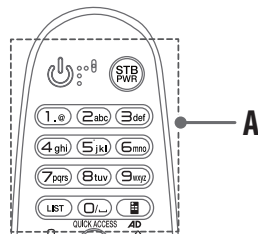
(Some buttons and services may not be provided depending on models or regions.)

When the message "Magic remote battery is low. Change the battery." is displayed, replace the battery.

To replace batteries, open the battery cover, replace batteries (1.5 V AA) matching the ⊕ and ⊖ ends to the label inside the compartment, and close the battery cover. Be sure to point the magic remote toward the remote control sensor on the TV. To remove the batteries, perform the installation actions in reverse.



- In Analogue TV and some countries, some remote control buttons may not work.



A

⏻ **(POWER)** Turns the TV on or off.

STB PWR You can turn your set-top box on or off by adding the set-top box to the universal remote control for your TV.

Number buttons Enters numbers.

Alphabet buttons Enters letters.

LIST Accesses the saved programmes list.

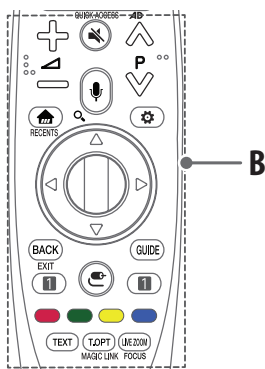
⏴ **(Space)** Opens an empty space on the screen keyboard.

☒ **(Screen remote)** Displays the Screen Remote.

- Accesses the Universal Control Menu.

AD* Audio descriptions function will be enabled.

QUICK ACCESS* You can access the application or Live TV using the number buttons corresponding to the features.



B

+ / - Adjusts the volume level.

MUTE Mutes all sounds.
 - Pressing and holding the **MUTE** button displays the **Accessibility** menu.

Voice recognition

Network connection is required to use the voice recognition function.

- 1 Press the voice recognition button.
- 2 Speak when the voice display window appears on the TV screen.

SEARCH Search for content such as TV programmes, movies and other videos, or perform a web search by entering text in the search bar.

P Scrolls through the saved programmes.

HOME Accesses the Home menu.

RECENTS* Shows the previous history.

Q. Settings Accesses the Quick Settings.
 - Pressing and holding the **Q. Settings** button displays the **All Settings** menu.

Wheel (OK) Press the center of the Wheel button to select a menu. You can change programmes by using the Wheel button.

Navigation buttons **Up/down/left/right** Press the up, down, left or right button to scroll the menu. If you press **Up/down/left/right** buttons while the pointer is in use, the pointer will disappear from the screen and Magic Remote will operate like a general remote control. To display the pointer on the screen again, shake Magic Remote to the left and right.

BACK Returns to the previous screen.

EXIT* Clears on-screen displays and returns to last input viewing.

GUIDE Shows programmes guide.

INPUT Changes the input source.
 - Pressing and holding the **INPUT** button displays all the lists of external inputs.

1 Streaming Service buttons Connects to the Video Streaming Service.

Red, Green, Yellow, Blue These access special functions in some menus.

Teletext buttons (TEXT, T.OPT) These buttons are used for teletext.

MAGIC LINK* Provides content related to the program you are currently watching.

LIVE ZOOM By zooming in on the selected area, you can view it in full screen.

FOCUS* You can zoom in on the area where the remote control is pointed.

* To use the button, press and hold for more than 3 seconds.

Registering magic remote

How to register the magic remote

To use the Magic Remote, first pair it with your TV.

- 1 Put batteries into the Magic Remote and turn the TV on.
- 2 Point the Magic Remote at your TV and press the **Wheel (OK)** on the remote control.
 - If the TV fails to register the Magic Remote, try again after turning the TV off and back on.

How to deregister the magic remote

Press and hold the **BACK** and **HOME** buttons at the same time for five seconds, to unpair the Magic Remote with your TV.

- Pressing and holding the **GUIDE** button will let you cancel and reregister Magic Remote at once.

Licenses

Supported licenses may differ by model. For more information about licenses, visit www.lg.com.

(Only UJ75**, SJ80**, SJ85**, SJ95**)



Open source software notice information

To obtain the source code under GPL, LGPL, MPL, and other open source licenses, that is contained in this product, please visit <http://opensource.lge.com>.

In addition to the source code, all referred license terms, warranty disclaimers and copyright notices are available for download. LG Electronics will also provide open source code to you on CD-ROM for a charge covering the cost of performing such distribution (such as the cost of media, shipping, and handling) upon email request to opensource@lge.com. This offer is valid for three (3) years from the date on which you purchased the product.

External control device setup

(Depending on model)

To obtain the external control device setup information, please visit www.lg.com.

Troubleshooting

- Cannot control the TV with the remote control.
 - Check the remote control sensor on the product and try again.
 - Check if there is any obstacle between the product and the remote control.
 - Check if the batteries are still working and properly installed (⊕ to ⊕, ⊖ to ⊖).
- No image display and no sound is produced.
 - Check if the product is turned on.
 - Check if the power cord is connected to a wall outlet.
 - Check if there is a problem in the wall outlet by connecting other products.
- The TV turns off suddenly.
 - Check the power control settings. The power supply may be interrupted.
 - Check if the **Sleep Timer / Timer Power Off** is activated in the **Timers** settings.
 - If there is no signal while the TV is on, the TV will turn off automatically after 15 minutes of inactivity.
- When connecting to the PC (HDMI), **No Signal** or **Invalid Format** is displayed.
 - Turn the TV off/on using the remote control.
 - Reconnect the HDMI cable.
 - Restart the PC with the TV on.

Abnormal Display

- If the product feels cold to the touch, there may be a small "flicker" when it is turned on. This is normal, there is nothing wrong with product.
- This panel is an advanced product that contains millions of pixels. You may see tiny black dots and/or brightly coloured dots (red, blue or green) at a size of 1 ppm on the panel. This does not indicate a malfunction and does not affect the performance and reliability of the product. This phenomenon also occurs in third-party products and is not subject to exchange or refund.
- You may find different brightness and color of the panel depending on your viewing position(left/right/top/down). This phenomenon occurs due to the characteristic of the panel. It is not related with the product performance, and it is not malfunction.
- Displaying a still image for a prolonged period of time may cause image sticking. Avoid displaying a fixed image on the TV screen for a long period of time.

Generated sound

- "Cracking" noise: A cracking noise that occurs when watching or turning off the TV is generated by plastic thermal contraction due to temperature and humidity. This noise is common for products where thermal deformation is required.
- Electrical circuit humming/panel buzzing: A low level noise is generated from a high-speed switching circuit, which supplies a large amount of current to operate a product. It varies depending on the product. This generated sound does not affect the performance and reliability of the product.

Specifications

- The annual energy consumption indicated on the energy label is measured in accordance with IEC 62087 and the Hong Kong Energy Efficiency Labelling Scheme (EELS) (depending on the model).
- The actual energy consumption depends on the usage environment (the content watched, TV settings, etc.).

Wireless module Specification

- As band channels can vary per country, the user cannot change or adjust the operating frequency. This product is configured for the regional frequency table.
- For consideration of the user, this device should be installed and operated with a minimum distance of 20 cm between the device and the body.

(Only UJ65**, UJ75**, SJ80**, SJ85**, SJ95**)

Wireless module(LGSBWAC2)Specifications	
Wireless LAN (IEEE 802.11a/b/g/n/ac)	
Frequency range	Output power (Max.)
2400 to 2483.5 MHz	14 dBm
5150 to 5250 MHz	16.5 dBm
5725 to 5850 MHz	11.5 dBm
Bluetooth	
Frequency range	Output power (Max.)
2400 to 2483.5 MHz	8.5 dBm

(Only UJ63**)

Wireless module(LGSWFAC71)Specifications	
Wireless LAN (IEEE 802.11a/b/g/n/ac)	
Frequency range	Output power (Max.)
2400 to 2483.5 MHz	13 dBm
5150 to 5250 MHz	16.5 dBm
5725 to 5850 MHz	10 dBm

Environment condition	Operating Temperature	0 °C to 40 °C
	Operating Humidity	Less than 80 %
	Storage Temperature	-20 °C to 60 °C
	Storage Humidity	Less than 85 %

	Digital TV	Analogue TV
Television system	DTMB	PAL-I/DK, NTSC-M
Programme coverage	DTMB: 21~69	PAL-DK: VHF/UHF 1~69, Cable: 1~47 PAL-I: VHF/UHF 1~69, Cable: 1~47 NTSC M: VHF/UHF 2~78, Cable: 1~71
External antenna impedance	75 Ω	



Record the model number and serial number of the TV.
Refer to the label on the back cover and quote this
information to your dealer when requiring any service.

MODEL _____

SERIAL _____



OWNER'S MANUAL

EXTERNAL CONTROL DEVICE SETUP

Please read this manual carefully before operating the set and retain it for future reference.

KEY CODES

- This feature is not available for all models.

Code (Hexa)	Function	Note	Code (Hexa)	Function	Note
00	CH +, PR +	R/C Button	53	List	R/C Button
01	CH -, PR -	R/C Button	5B	Exit	R/C Button
02	Volume +	R/C Button	60	PIP(AD)	R/C Button
03	Volume -	R/C Button	61	Blue	R/C Button
06	> (Arrow Key / Right Key)	R/C Button	63	Yellow	R/C Button
07	< (Arrow Key / Left Key)	R/C Button	71	Green	R/C Button
08	Power	R/C Button	72	Red	R/C Button
09	Mute	R/C Button	79	Ratio / Aspect Ratio	R/C Button
0B	Input	R/C Button	91	AD (Audio Description)	R/C Button
0E	SLEEP	R/C Button	9E	LIVE MENU	R/C Button
0F	TV, TV/RAD	R/C Button	7A	User Guide	R/C Button
10 - 19	* Number Key 0 - 9	R/C Button	7C	Smart / Home	R/C Button
1A	Q.View / Flashback	R/C Button	7E	SIMPLINK	R/C Button
1E	FAV (Favorite Channel)	R/C Button	8E	▶▶ (Forward)	R/C Button
20	Text (Teletext)	R/C Button	8F	◀◀ (Rewind)	R/C Button
21	T. Opt (Teletext Option)	R/C Button	AA	Info	R/C Button
28	Return (BACK)	R/C Button	AB	Program Guide	R/C Button
30	AV (Audio / Video) Mode	R/C Button	B0	▶ (Play)	R/C Button
39	Caption/Subtitle	R/C Button	B1	■ (Stop / File List)	R/C Button
40	∧ (Arrow Key / Cursor Up)	R/C Button	B5	RECENT	R/C Button
41	∨ (Arrow Key / Cursor Down)	R/C Button	BA	(Freeze / Slow Play / Pause)	R/C Button
42	My Apps	R/C Button	BB	Soccer	R/C Button
43	Menu / Settings	R/C Button	BD	● (REC)	R/C Button
44	OK / Enter	R/C Button	DC	3D	R/C Button
45	Q.Menu	R/C Button	99	AutoConfig	R/C Button
4C	List, - (ATSC Only)	R/C Button	9F	App / *	R/C Button
4D	PICTURE	R/C Button	9B	TV / PC	R/C Button
52	SOUND	R/C Button			

* Key code 4C (0x4C) is available on ATSC/ISDB models which use major/minor channel.
(For South Korea, Japan, North America, Latin America except Colombia models)

EXTERNAL CONTROL DEVICE SETUP

- Image shown may differ from your TV.

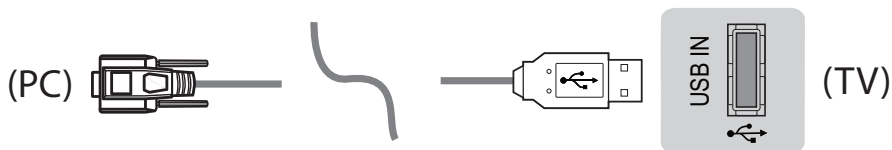
Connect the USB to Serial converter/RS-232C input jack to an external control device (such as a computer or an A/V control system) to control the product's functions externally.

Note: The type of control port on the TV can be different between model series.

- * Please be advised that not all models support this type of connectivity.
- * Cable is not provided.

USB to Serial converter with USB Cable

USB Type

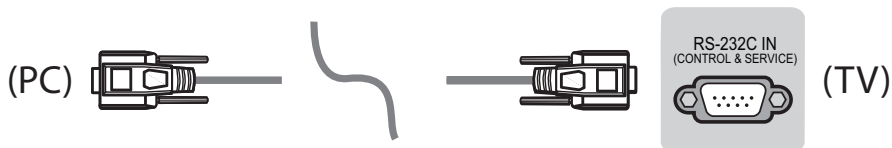


- LGTV supports PL2303 chip-based (Vendor ID : 0x0557, Product ID : 0x2008) USB to serial converter which is not made nor provided by LG.
- It can be purchased from computer stores that carry accessories for IT support professionals.

RS-232C With RS232C Cable

DE9 (D-Sub 9pin) Type

- You need to purchase the RS-232C (DE9, D-Sub 9pin female-to-female type) to RS-232C cable required for the connection between the PC and the TV, which is specified in the manual.

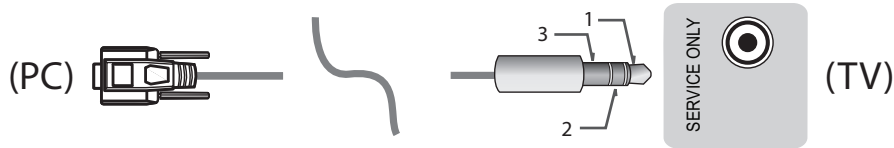


The connection interface may differ from your TV.

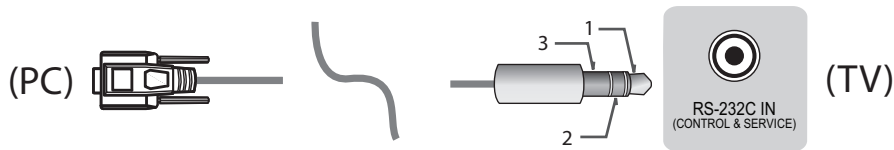
ENGLISH

Phone jack Type

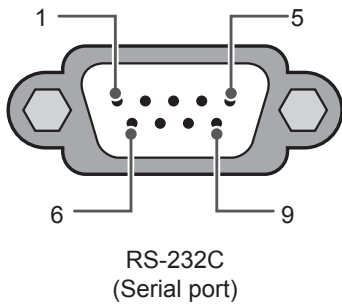
- You need to purchase the phone-jack to RS-232 cable required for the connection between the PC and the TV, which is specified in the manual.
- * For other models, connect to the USB port.
- * The connection interface may differ from your TV.



- or -

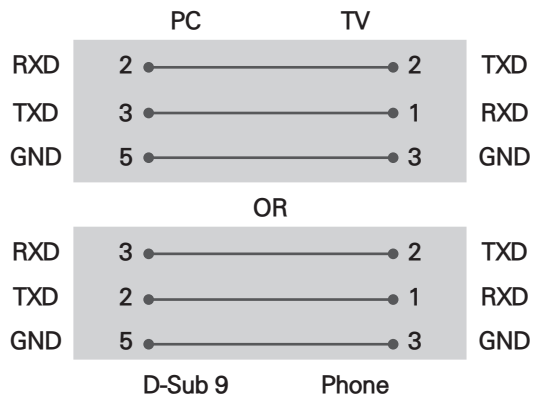


Customer Computer



RS-232C configurations

3-Wire Configurations(Not standard)



Set ID

For Set ID number, see "Real Data Mapping" on p.6

1. Press **SETTINGS** to access the main menus.
2. Press the Navigation buttons to scroll to (***General** → **About this TV or OPTION**) and press **OK**.
3. Press the Navigation buttons to scroll to **SET ID** and press **OK**.
4. Scroll left or right to select a set ID number and select **CLOSE**. The adjustment range is 1-99.
5. When you are finished, press **EXIT**.
* (Depending on model)

Communication Parameters

- Baud rate : 9600 bps (UART)
- Data length : 8 bits
- Parity : None
- Stop bit : 1 bit
- Communication code : ASCII code
- Use a crossed (reverse) cable.

Command reference list

(Depending on model)

	COMMAND1	COMMAND2	DATA (Hexadecimal)		COMMAND1	COMMAND2	DATA (Hexadecimal)
01. Power*	k	a	00 to 01	15. Balance	k	t	00 to 64
02. Aspect Ratio	k	c	(p.7)	16. Color (Colour) Temperature	x	u	00 to 64
03. Screen Mute	k	d	(p.7)	17. ISM Method (Only Plasma TV)	j	p	(p.8)
04. Volume Mute	k	e	00 to 01	18. Equalizer	j	v	(p.8)
05. Volume Control	k	f	00 to 64	19. Energy Saving	j	q	00 to 05
06. Contrast	k	g	00 to 64	20. Tune Command	m	a	(p.9)
07. Brightness	k	h	00 to 64	21. Channel (Programme) Add/Del(Skip)	m	b	00 to 01
08. Color/ Colour	k	i	00 to 64	22. Key	m	c	Key Codes
09. Tint	k	j	00 to 64	23. Control Backlight, Control Panel Light	m	g	00 to 64
10. Sharpness	k	k	00 to 32	24. Input select (Main)	x	b	(p.11)
11. OSD Select	k	l	00 to 01	25. 3D (Only 3D models)	x	t	(p.11)
12. Remote Control Lock Mode	k	m	00 to 01	26. Extended 3D (Only 3D models)	x	v	(p.12)
13. Treble	k	r	00 to 64	27. Auto Configure	j	u	(p.12)
14. Bass	k	s	00 to 64				

* Note: During playing or recording media, all commands except Power (ka) and Key (mc) are not executed and treated as NG.

With RS232C cable, TV can communicate "ka command" in power-on or power-off status. but with USB-to-Serial converter cable, the command works only if TV is on.

Transmission / Receiving Protocol

Transmission

[Command1][Command2][][Set ID][][Data][Cr]

[Command 1] : First command to control the TV. (j, k, m or x)

[Command 2] : Second command to control the TV.

[Set ID] : You can adjust the [Set ID] to choose desired monitor ID number in option menu. Adjustment range in TV is 1 to 99. If [Set ID] value is selected to '0', every connected set can be controlled.

* [Set ID] is indicated as decimal (1 to 99) on menu and as Hexadecimal (0x00 to 0x63) on transmission/receiving protocol.

[DATA] : To transmit command data (hexadecimal). Transmit 'FF' data to read status of command.

[Cr] : Carriage Return - ASCII code '0x0D'

[] : Space - ASCII code '0x20'

OK Acknowledgement

[Command2][][Set ID][][OK][Data][x]

* The set transmits ACK (acknowledgement) based on this format when receiving normal data. At this time, if the data is data read mode, it indicates present status data. If the data is data write mode, it returns the data of the PC computer.

Error Acknowledgement

[Command2][][Set ID][][NG][Data][x]

* The set transmits ACK (acknowledgement) based on this format when receiving abnormal data from non-viable functions or communication errors.

Data 00: Illegal Code

Real data mapping (Hexadecimal b Decimal)

* When you enter the [data] in hexadecimal, refer to following conversion table.

* Channel Tune (ma) Command uses two-byte hexadecimal value([data]) to select channel number.

00 : Step 0	32 : Step 50 (Set ID 50)	FE : Step 254
01 : Step 1 (Set ID 1)	33 : Step 51 (Set ID 51)	FF : Step 255
...
0A : Step 10 (Set ID 10)	63 : Step 99 (Set ID 99)	01 00 : Step 256
...
0F : Step 15 (Set ID 15)	C7 : Step 199	27 0E : Step 9998
10 : Step 16 (Set ID 16)	C8 : Step 200	27 0F : Step 9999
...

* Commands may work differently depending on model and signal.

01. Power (Command: k a)

- ▶ To control Power *On or Off of the set.

Transmission [k][a][][Set ID][][Data][Cr]

Data 00 : Power Off 01 : *Power On

Ack [a][][Set ID][][OK/NG][Data][x]

- ▶ To Show TV is Power On or *Off

Transmission [k][a][][Set ID][][FF][Cr]

Ack [a][][Set ID][][OK][Data][x]

* Similarly, if other functions transmit 'FF' data based on this format, Acknowledgement feedback presents status about each function.

02. Aspect Ratio (Command: k c)

(Main Picture Size)

- ▶ To adjust the screen format. (Main picture format)
You can also adjust the screen format using the Aspect Ratio in the Q.MENU. or PICTURE menu.

Transmission [k][c][][Set ID][][Data][Cr]

Data 01 : Normal screen 07 : 14:9
(4:3) (Europe, Colombia, Mid-East,
02 : Wide screen Asia except South Korea and
(16:9) Japan)
04 : Zoom 09 : * Just Scan
05 : Zoom 2 0B : Full Wide
(Latin America (Europe, Colombia, Mid-
except Colombia East, Asia except South
Only) Korea and Japan)
06 : Set by Program/ 10 to 1F : Cinema Zoom 1 to 16
Original 0c : 21:9 (Depending on model)

Ack [c][][Set ID][][OK/NG][Data][x]

- * Using the PC input, you select either 16:9 or 4:3 screen aspect ratio.
- * In DTV/HDMI/Component mode (high-definition), Just Scan is available.
- * Full wide mode may work differently based on model and is supported for DTV fully, and ATV, AV partially.

03. Screen Mute (Command: k d)

- ▶ To select screen mute on/off.

Transmission [k][d][][Set ID][][Data][Cr]

Data 00 : Screen mute off (Picture on)
Video mute off
01 : Screen mute on (Picture off)
10 : Video mute on

Ack [d][][Set ID][][OK/NG][Data][x]

* In case of video mute on only, TV will display On Screen Display(OSD). But, in case of Screen mute on, TV will not display OSD.

04. Volume Mute (Command: k e)

- ▶ To control volume mute on/off.
You can also adjust mute using the MUTE button on remote control.

Transmission [k][e][][Set ID][][Data][Cr]

Data 00 : Volume mute on (Volume off)
01 : Volume mute off (Volume on)

Ack [e][][Set ID][][OK/NG][Data][x]

05. Volume Control (Command: k f)

- ▶ To adjust volume.
You can also adjust volume with the volume buttons on remote control.

Transmission [k][f][][Set ID][][Data][Cr]

Data Min : 00 to Max : 64

Ack [f][][Set ID][][OK/NG][Data][x]

06. Contrast (Command: k g)

- ▶ To adjust screen contrast.
You can also adjust contrast in the PICTURE menu.

Transmission [k][g][][Set ID][][Data][Cr]

Data Min : 00 to Max : 64

Ack [g][][Set ID][][OK/NG][Data][x]

07. Brightness (Command: k h)

- ▶ To adjust screen brightness.
You can also adjust brightness in the PICTURE menu.

Transmission [k][h][][Set ID][][Data][Cr]

Data Min : 00 to Max : 64

Ack [h][][Set ID][][OK/NG][Data][x]

08. Color/Colour (Command: k i)

- ▶ To adjust the screen Color(Colour).
You can also adjust colour in the PICTURE menu.

Transmission [k][i][][Set ID][][Data][Cr]

Data Min : 00 to Max : 64

Ack [i][][Set ID][][OK/NG][Data][x]

09. Tint (Command: k j)

- ▶ To adjust the screen tint.
You can also adjust tint in the PICTURE menu.

Transmission [k][j][][Set ID][][Data][Cr]

Data Red : 00 to Green : 64

Ack [j][][Set ID][][OK/NG][Data][x]

10. Sharpness (Command: k k)

- ▶ To adjust the screen sharpness.
You can also adjust sharpness in the PICTURE menu.

Transmission [k][k][][Set ID][][Data][Cr]

Data Min : 00 to Max : 32

Ack [k][][Set ID][][OK/NG][Data][x]

11. OSD Select (Command: k l)

- ▶ To select OSD (On Screen Display) on/off when controlling remotely.

Transmission [k][l][][Set ID][][Data][Cr]

Data 00 : OSD off 01 : OSD on

Ack [l][][Set ID][][OK/NG][Data][x]

12. Remote control lock mode (Command: k m)

- ▶ To lock the front panel controls on the monitor and remote control.

Transmission [k][m][][Set ID][][Data][Cr]

Data 00 : Lock off 01 : Lock on

Ack [m][][Set ID][][OK/NG][Data][x]

- * If you are not using the remote control, use this mode.
When main power is off & on (plug-off and plug-in, after 20 - 30 seconds), external control lock is released.
- * In the standby mode (DC off by off timer or 'ka', 'mc' command), and if key lock is on, TV will not turn on by power on key of IR & Local Key.

13. Treble (Command: k r)

- ▶ To adjust treble.
You can also adjust in the AUDIO menu.

Transmission [k][r][][Set ID][][Data][Cr]

Data Min : 00 to Max : 64

Ack [r][][Set ID][][OK/NG][Data][x]

*(Depending on model)

14. Bass (Command: k s)

- ▶ To adjust Bass.
You can also adjust in the AUDIO menu.

Transmission [k][s][][Set ID][][Data][Cr]

Data Min : 00 to Max : 64

Ack [s][][Set ID][][OK/NG][Data][x]

*(Depending on model)

15. Balance (Command: k t)

- ▶ To adjust balance.
You can also adjust balance in the AUDIO menu.

Transmission [k][t][][Set ID][][Data][Cr]

Data Min : 00 to Max : 64

Ack [t][][Set ID][][OK/NG][Data][x]

16. Color(Colour) Temperature (Command: x u)

- ▶ To adjust colour temperature. You can also adjust Color(Colour) Temperature in the PICTURE menu.

Transmission [x][u][][Set ID][][Data][Cr]

Data Min : 00 to Max : 64

Ack [u][][Set ID][][OK/NG][Data][x]

17. ISM Method (Command: j p) (Only Plasma TV)

- ▶ To control the ISM method. You can also adjust ISM Method in OPTION menu.

Transmission [j][p][][Set ID][][Data][Cr]

Data Min : 02: Orbiter

08: Normal

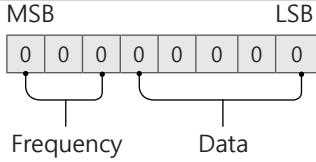
20: Color(Colour) Wash

Ack [p][][Set ID][][OK/NG][Data][x]

18. Equalizer (Command : j v)

▶ Adjust EQ of the set.

Transmission [j][v][][Set ID][][Data][Cr]



7	6	5	Frequency	4	3	2	1	0	Step
0	0	0	1st Band	0	0	0	0	0	0(decimal)
0	0	1	2nd Band	0	0	0	0	1	1(decimal)
0	1	0	3rd Band
0	1	1	4th Band	1	0	0	1	1	19(decimal)
1	0	0	5th Band	1	0	1	0	1	20(decimal)

Acknowledgement [v][][Set ID][][OK/NG][Data][x]

* It depends on model, and can adjust when sound mode is EQ adjustable value.

19. Energy Saving (Command: j q)

▶ To reduce the power consumption of the TV. You can also adjust Energy Saving in PICTURE menu.

Transmission [j][q][][Set ID][][Data][Cr]

Data

- 00 : Off
- 01 : Minimum
- 02 : Medium
- 03 : Maximum
- 04 : Auto (For LCD TV / LED TV) / Intelligent sensor (For PDP TV)
- 05 : Screen off

* (Depending on model)

Ack [q][][Set ID][][OK/NG][Data][x]

20. Tune Command (Command: m a)

* This command may work differently depending on model and signal.

- For Europe, Mid-East, Colombia, Asia except South Korea and Japan Model

▶ Select channel to following physical number.

Transmission [m][a][][Set ID][][Data 00][][Data 01][][Data 02][Cr]

* Analog Antenna/Cable

[Data 00][Data 01] Channel Data

Data 00 : High byte channel data

Data 01 : Low byte channel data

- 00 00 ~ 00 C7 (Decimal : 0 ~ 199)

Data 02 : Input Source (Analog)

- 00 : Antenna TV (ATV)

- 80 : Cable TV (CATV)

* Digital Antenna/Cable/Satellite

[Data 00][Data 01]: Channel Data

Data 00 : High Channel data

Data 01 : Low Channel data

- 00 00 ~ 27 0F (Decimal: 0 ~ 9999)

Data 02 : Input Source (Digital)

- 10 : Antenna TV (DTV)

- 20 : Antenna Radio (Radio)

- 40 : Satellite TV (SDTV)

- 50 : Satellite Radio (S-Radio)

- 90 : Cable TV (CADTV)

- a0 : Cable Radio (CA-Radio)

* Tune Command Examples:

1. Tune to the Analog antenna (PAL) Channel 10.

Set ID = All = 00

Data 00 & 01 = Channel Data is 10 = 00 0a

Data 02 = Analog Antenna TV = 00

Result = **ma 00 00 0a 00**

2. Tune to the digital antenna (DVB-T) Channel 01.

Set ID = All = 00

Data 00 & 01 = Channel Data is 1 = 00 01

Data 02 = Digital Antenna TV = 10

Result = **ma 00 00 01 10**

3. Tune to the satellite (DVB-S) Channel 1000.

Set ID = All = 00

Data 00 & 01 = Channel Data is 1000 = 03 E8

Data 02 = Digital Satellite TV = 40

Result = **ma 00 03 E8 40**

Ack [a][][Set ID][][OK][Data 00][Data 01]

[Data 02][x][a][][Set ID][][NG][Data 00][x]

- For South Korea, North/Latin America except Colombia Model

▶ To tune channel to following physical/major/minor number.

Transmission [m][a][][0][][Data00][][Data01][][Data02][][Data03][][Data04][][Data05][Cr]

Digital channels have a Physical, Major, and Minor channel number. The Physical number is the actual digital channel number, the Major is the number that the channel should be mapped to, and the Minor is the sub-channel. Since the ATSC tuner automatically maps the channel from the Major / Minor number, the Physical number is not required when sending a command in Digital.

* Analog Antenna/Cable

Data 00 : Physical Channel Number

- Antenna (ATV) : 02~45 (Decimal: 2 ~ 69)
- Cable (CATV) : 01, 0E~7D (Decimal : 1, 14~125)

[Data 01 ~ 04]: Major/Minor Channel Number

Data 01 & 02: xx (Don't care)

Data 03 & 04: xx (Don't care)

Data 05: Input Source (Analog)

- 00 : Antenna TV (ATV)
- 01 : Cable TV (CATV)

* Digital Antenna/Cable

Data 00 : xx (Don't care)

[Data 01][Data 02]: Major Channel Number

Data 01 : High byte Channel Data

Data 02 : Low byte Channel Data

- 00 01 ~ 27 0F (Decimal: 1 ~ 9999)

[Data 03][Data 04]: Minor Channel Number

Data 03 : High byte Channel Data

Data 04 : Low byte Channel Data

Data 05 : Input Source (Digital)

- 02 : Antenna TV (DTV) – Use Physical Channel Number
- 06 : Cable TV (CADTV) – Use Physical Channel Number
- 22 : Antenna TV (DTV) – Don't Use Physical Channel Number
- 26 : Cable TV (CADTV) - Don't Use Physical Channel Number
- 46 : Cable TV (CADTV) – Use Physical/Major Channel Number Only (One Part Channel)
- 66 : Cable TV (CADTV) – Use Major Channel Number Only (One Part Channel)
- 0b : Cable DTV Plus – Use Physical Channel Number
- 2b : Cable DTV Plus – Don't Use Physical Channel Number
- 4b : Cable DTV Plus – Use Physical/Major Channel Number Only (One Part Channel)
- 6b : Cable DTV Plus – Use Major Channel Number Only (One Part Channel)

Two bytes are available for each major and minor channel data, but usually the low byte is used alone (high byte is 0).

* Tune Command Examples:

1. Tune to the Analog cable (NTSC) channel 35.

Set ID = All = 00

Data 00 = Channel Data is 35 = 23

Data 01 & 02 = No Major = 00 00

Data 03 & 04 = No Minor = 00 00

Data 05 = Analog Cable TV = 01

Total = **ma 00 23 00 00 00 01**

2. Tune to the digital antenna (ATSC) channel 30-3.

Set ID = All = 00

Data 00 = Don't know Physical = 00

Data 01 & 02 = Major is 30 = 00 1E

Data 03 & 04 = Minor is 3 = 00 03

Data 05 = Digital Antenna TV = 22

Total = **ma 00 00 00 1E 00 03 22**

Ack [a][][Set ID][][OK][Data 00][Data 01]

[Data 02][Data 03][Data 04][Data 05]

[x][a][][Set ID][][NG][Data 00][x]

• For Japan Model

- ▶ To tune channel to following physical/major/minor number.

Transmission [m][a][][0][][Data00][][Data01]

[][Data02][][Data03][][Data04][][Data05][Cr]

* Digital Antenna/Satellite

Data 00: xx (Don't care)

[Data 01][Data 02]: Major Channel Number

Data 01: High byte Channel Data

Data 02: Low byte Channel Data

- 00 01 ~ 27 0F (Decimal: 1 ~ 9999)

[Data 03][Data 04]: Minor/Branch Channel Number

(Don't care in Satellite)

Data 03: High byte Channel Data

Data 04: Low byte Channel Data

Data 05 : Input Source (Digital/Satellite for Japan)

- 02 : Antenna TV (DTV)
- 42 : Antenna TV (DTV) – Use Physical/Major Channel Number Only (One Part Channel)
- 62 : Antenna TV (DTV) – Use Major Channel Number Only (One Part Channel)
- 07 : BS (Broadcasting Satellite)
- 08 : CS1 (Communication Satellite 1)
- 09 : CS2 (Communication Satellite 2)

* Tune Command Examples:

1. Tune to the digital antenna (ISDB-T) channel 17-1.

Set ID = All = 00

Data 00 = Don't know Physical = 00

Data 01 & 02 = Major is 17 = 00 11

Data 03 & 04 = Minor/Branch is 1 = 00 01

Data 05 = Digital Antenna TV = 02

Total = **ma 00 00 00 11 00 01 02**

2. Tune to the BS (ISDB-BS) channel 30.

Set ID = All = 00

Data 00 = Don't know Physical = 00

Data 01 & 02 = Major is 30 = 00 1E

Data 03 & 04 = Don't Care = 00 00

Data 05 = Digital BS TV = 07

Total = **ma 00 00 00 1E 00 00 07**

* This feature is varied based on the model.

Ack [a][][Set ID][][OK][Data 00][Data 01]

[Data 02][Data 03][Data 04][Data 05]

[x][a][][Set ID][][NG][Data 00][x]

21. Channel(Programme) Add/Del(Skip)

(Command: m b)

► To skip current channel(programme) for next time.

Transmission [m][b][][Set ID][][Data][Cr]

Data 00 : Del(ATSC,ISDB)/Skip(DVB) 01 : Add

Ack [b][][Set ID][][OK/NG][Data][x]

* Set the saved channel status to del(ATSC, ISDB)/skip(DVB) or add.

22. Key (Command: m c)

► To send IR remote key code.

Transmission [m][c][][Set ID][][Data][Cr]

Data Key code - p.2.

Ack [c][][Set ID][][OK/NG][Data][x]

23. Control Backlight (Command: m g)

• For LCD TV / LED TV

► To control the backlight.

Transmission [m][g][][Set ID][][Data][Cr]

Data Min : 00 to Max : 64

Ack [g][][Set ID][][OK/NG][Data][x]

Control Panel Light (Command: m g)

• For Plasma TV

► To control the panel light.

Transmission [m][g][][Set ID][][Data][Cr]

Data Min : 00 to Max : 64

Ack [g][][Set ID][][OK/NG][Data][x]

24. Input select (Command: x b)

(Main Picture Input)

► To select input source for main picture.

Transmission [x][b][][Set ID][][Data][Cr]

Data

00 : DTV 01 : CADTV

02 : Satellite DTV 10 : ATV

ISDB-BS (Japan)

03 : ISDB-CS1 (Japan)

04 : ISDB-CS2 (Japan)

11 : CATV

20 : AV or AV1 21 : AV2

40 : Component1 41 : Component2

60 : RGB

90 : HDMI1 91 : HDMI2

92 : HDMI3 93 : HDMI4

Ack [b][][Set ID][][OK/NG][Data][x]

* This function depends on model and signal.

25. 3D(Command: x t) (only 3D models)

(Depending on model)

► To change 3D mode for TV.

Transmission [x][t][][Set ID][][Data 00][][Data 01]

[][Data 02][][Data 03][Cr]

* (Depending on model)

Data Structure

[Data 00] 00 : 3D On

01 : 3D Off

02 : 3D to 2D

03 : 2D to 3D

[Data 01] 00 : Top and Bottom

01 : Side by Side

02 : Check Board

03 : Frame Sequential

04 : Column interleaving

05 : Row interleaving

[Data 02] 00 : Right to Left

01 : Left to Right

[Data 03] 3D Effect(3D Depth): Min : 00 - Max : 14

(*transmit by Hexadecimal code)

- * [Data 02], [Data 03] functions depend on model and signal.
- * If [Data 00] is 00 (3D On), [Data 03] has no meaning.
- * If [Data 00] is 01 (3D off) or 02 (3D to 2D), [Data 01], [Data 02] and [Data 03] have no meaning.
- * If [Data 00] is 03 (2D to 3D), [Data 01] and [Data 02] have no meaning.
- * If [Data 00] is 00 (3D On) or 03 (2D to 3D), [Data 03] works when 3D Mode (Genre) is manual only.
- * All 3D pattern options ([Data 01]) may not be available according to broadcasting/video signal.

[Data 00]	[Data 01]	[Data 02]	[Data 03]
00	O	O	O
01	X	X	X
02	X	X	X
03	X	O	O

X : don't care

```
Ack [t][ ][Set ID][ ][OK][Data00][Data01][Data02]
[Data03][x]
[t][ ][Set ID][ ][NG][Data00][x]
```

26. Extended 3D(Command: x v) (only 3D models) (Depending on model)

- ▶ To change 3D option for TV.

```
Transmission [x][v][ ][Set ID][ ][Data 00][ ]
[Data 01][Cr]
```

[Data 00] 3D option

- 00 : 3D Picture Correction
- 01 : 3D Depth (3D Mode is Manual Only)
- 02 : 3D Viewpoint
- 06 : 3D Color Correction
- 07 : 3D Sound Zooming
- 08 : Normal Image View
- 09 : 3D Mode (Genre)

[Data 01] It has own range for each 3D option determined by [Data 00].

- 1) When [Data 00] is 00

- 00 : Right to Left
- 01 : Left to Right

- 2) When [Data 00] is 01, 02

Data Min: 0 - Max: 14 (*transmit by Hexadecimal code)

Data value range(0 - 20) converts Viewpoint range (-10 - +10) automatically (Depending on model)

- * This option works when 3D Mode (Genre) is manual only.

- 3) When [Data 00] is 06, 07

- 00 : Off
- 01 : On

- 4) When [Data 00] is 08

- 00 : Revert to 3D video from 3D-to-2D converted 2D video
- 01 : Change 3D video to 2D video, except 2D-to-3D video

- * If conversion condition doesn't meet, command is treated as NG.

- 5) When [Data 00] is 09

- 00 : Standard
- 01 : Sport
- 02 : Cinema
- 03 : Extreme
- 04 : Manual
- 05 : Auto

```
Ack [v][ ][Set ID][ ][OK][Data00][Data01][x]
[v][ ][Set ID][ ][NG][Data00][x]
```

27. Auto Configure (Command: j u) (Depending on model)

- ▶ To adjust picture position and minimize image shaking automatically. It works only in RGB (PC) mode.

```
Transmission [j][u][ ][Set ID][ ][Data][Cr]
```

Data 01 : To set Auto Configure

```
Ack [u][ ][Set ID][ ][OK/NG][Data][x]
```