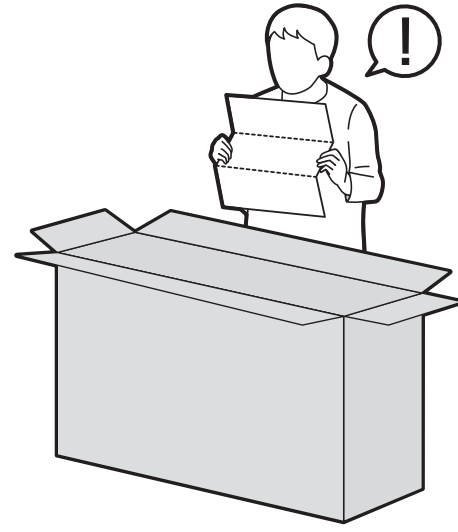
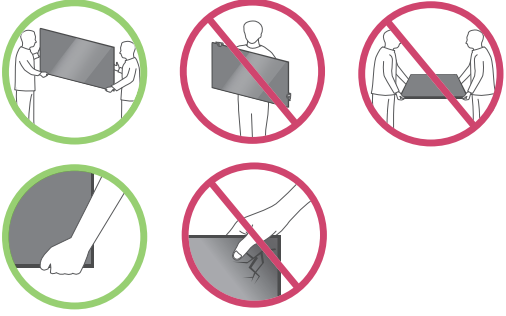
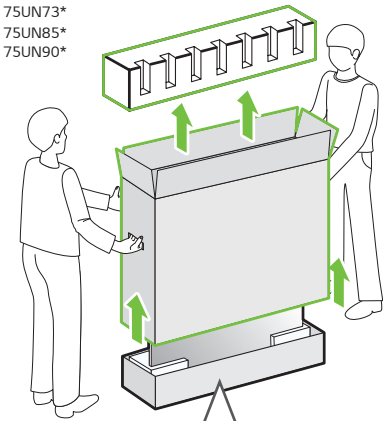


75UN6950ZUD	75UN7100PUD	82UN8570AUD
75UN6951ZUD	75UN7370AUH	82UN8570PUC
75UN6955ZUD	75UN7370PUE	82UN8070PUD
75UN6970PUD	75UN8570AUD	86UN8570AUD
75UN7070PUC	75UN8570PUC	86UN8570PUC
	75UN9070AUD	86UN9070AUD



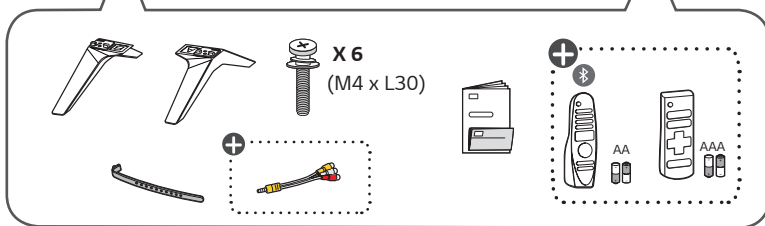
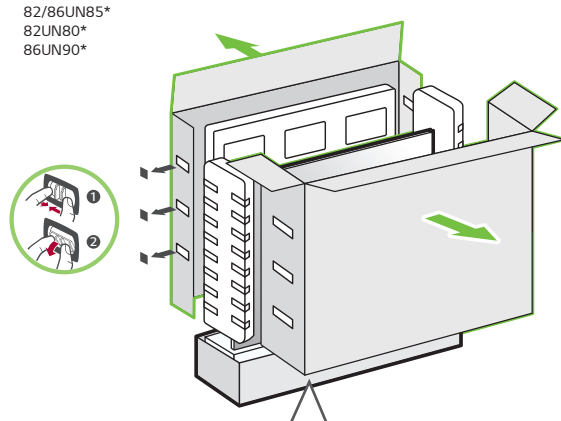
**1-A**

75UN69\*  
75UN70\*  
75UN71\*

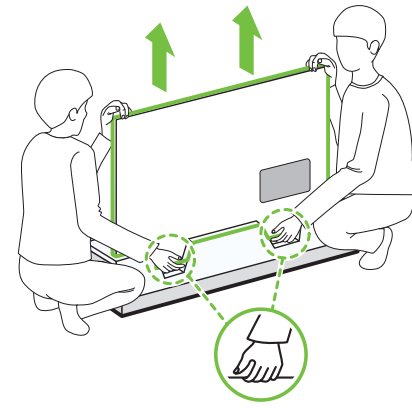


**1-B**

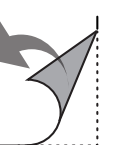
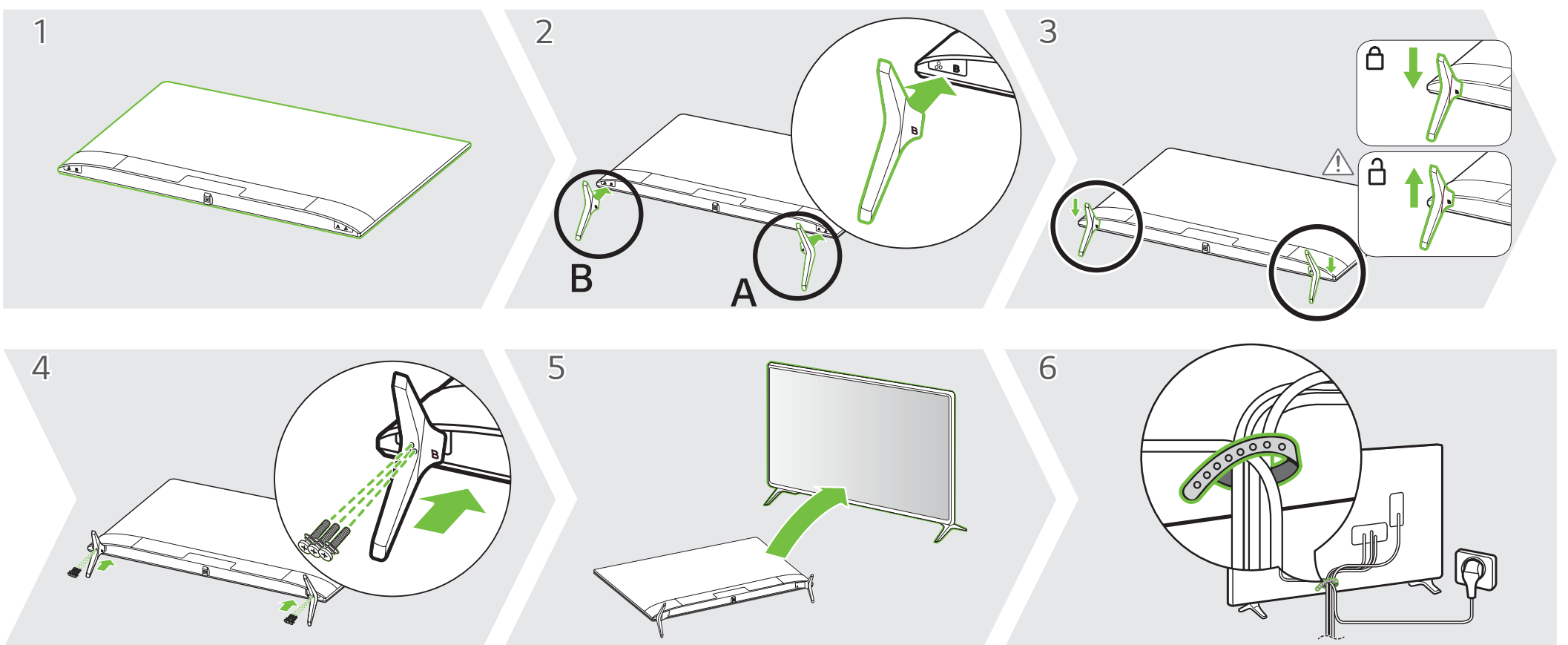
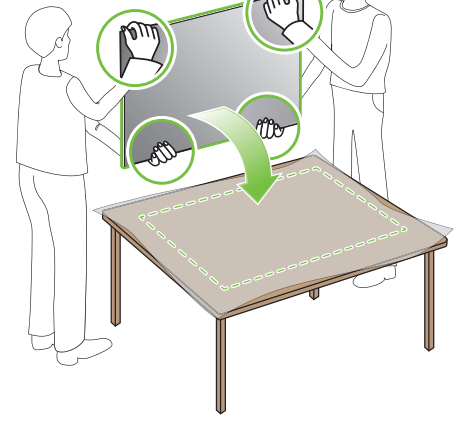
82/86UN85\*  
82UN80\*  
86UN90\*

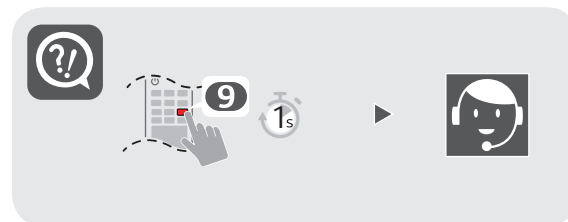
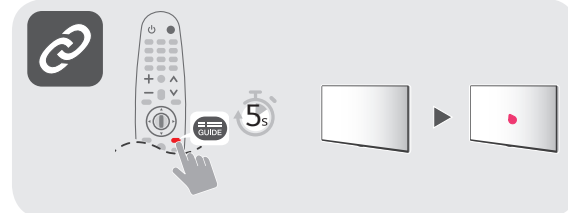
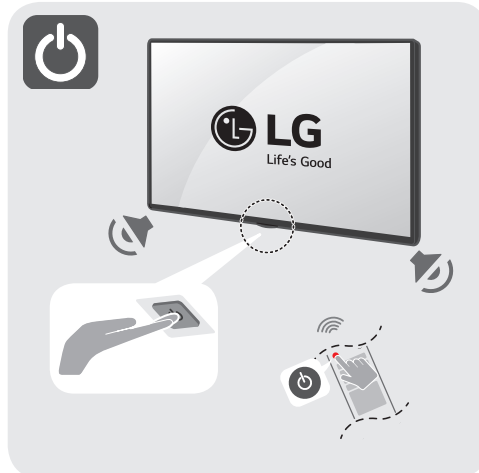
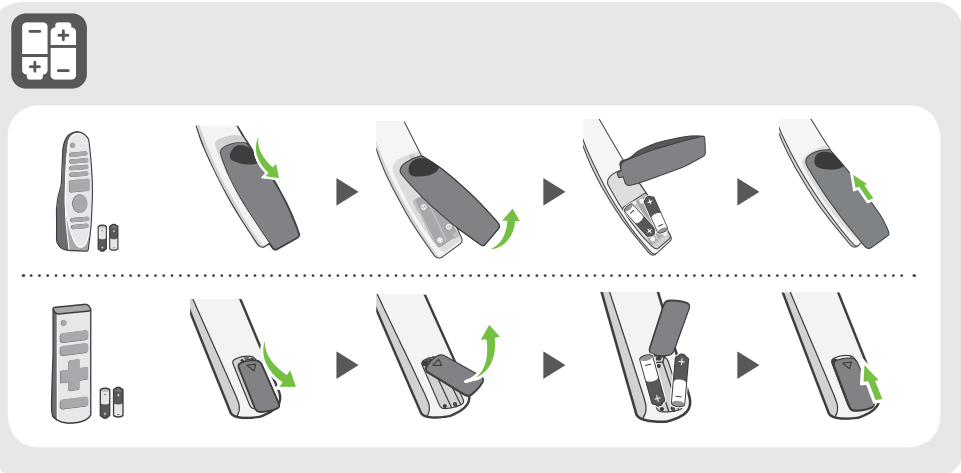
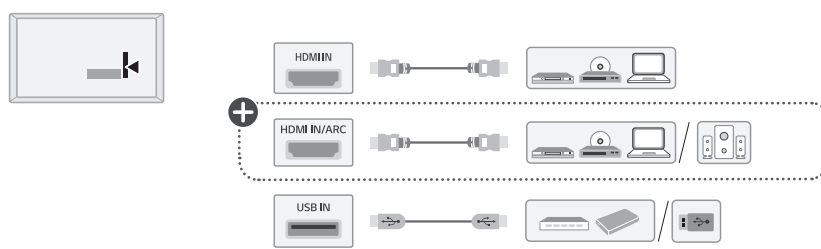
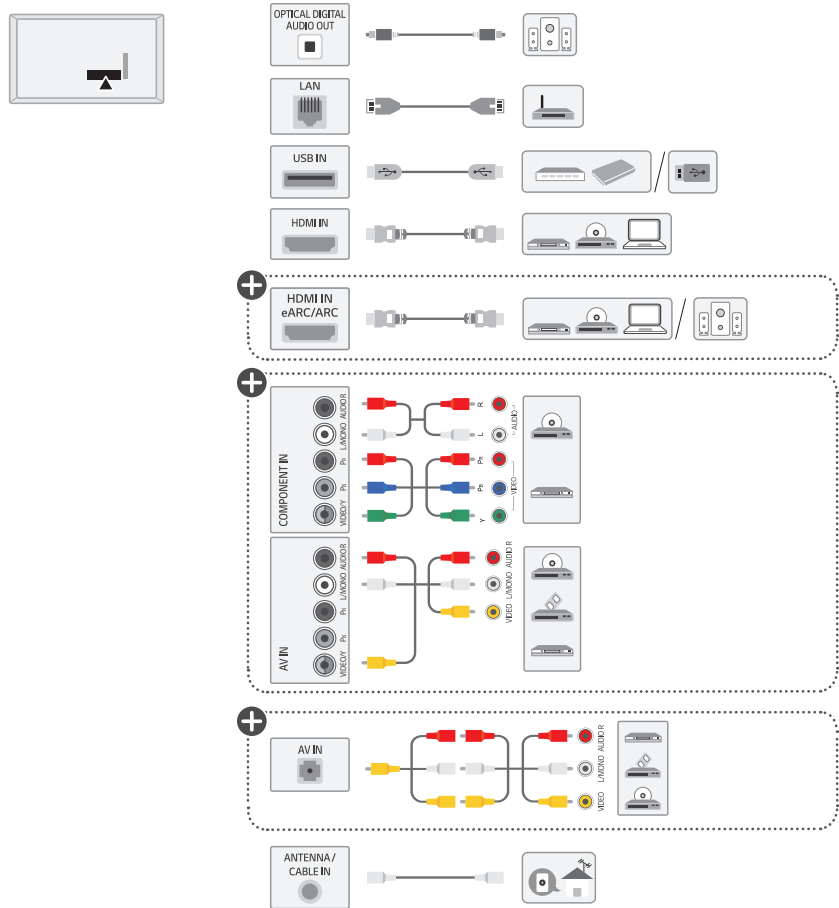


**2**

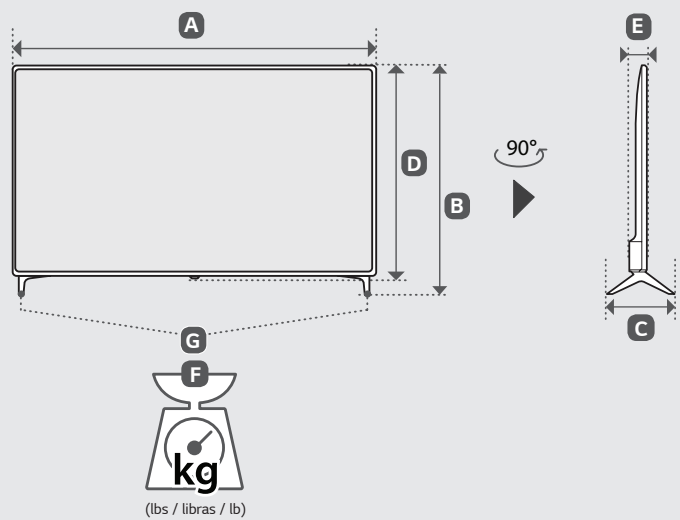


**3**





**A, B, C, D, E** : mm (inches / pulgadas / po)  
**F, G** : kg (lbs / libras / lb)



MODELS MODELOS MODÈLES	A		B		C		D		E		F		F-G		Power consumption
															Consumo de potencia
															Consommation électrique
75UN6950ZUD 75UN6951ZUD 75UN6955ZUD 75UN6970PUD 75UN7070PUC 75UN7100PUD 75UN7370AUH 75UN7370PUE 75UN8570AUD 75UN8570PUC 75UN9070AUD	1,693 (66,6)	1 693 (66,6)	1,048 (41,2)	1 048 (41,2)	345 (13,5)	345 (13,5)	978 (38,5)	978 (38,5)	88,8 (3,4)	88,8 (3,4)	35,4 (78,0)	35,4 (78,0)	34,6 (76,2)	34,6 (76,2)	240 W
82UN8570AUD 82UN8570PUC 82UN8070PUD	1,850 (72,8)	1 850 (72,8)	1,138 (44,8)	1 138 (44,8)	345 (13,5)	345 (13,5)	1,068 (42)	1 068 (42)	89,9 (3,5)	89,9 (3,5)	47,0 (103,6)	47,0 (103,6)	46,2 (101,8)	46,2 (101,8)	315 W
86UN8570AUD 86UN8570PUC 86UN9070AUD	1,943 (76,4)	1 943 (76,4)	1,188 (46,7)	1 188 (46,7)	345 (13,5)	345 (13,5)	1,118 (44)	1 118 (44)	93,3 (3,6)	93,3 (3,6)	45,0 (99,2)	45,0 (99,2)	44,2 (97,4)	44,2 (97,4)	335 W

Power requirement / Alimentación requerida / Alimentation

AC 120 V - 50 / 60 Hz



**ENGLISH** Read **Safety and Reference**.  
 The Analog Gender adapter can be purchased separately at Customer Service.

**ESPAÑOL** Leer **Seguridad y Consultas**.  
 La forma análoga se puede comprar por separado en el servicio de atención al cliente de LG.

**FRANÇAIS** Lisez **Sécurité et références**.  
 Vous pouvez vous procurer le connecteur analogique séparément en communiquant avec le Service à la clientèle de LG.

**ENGLISH**  
**Easy Setup Guide**  
 Please read this manual carefully before operating your set and retain it for future reference.

**ESPAÑOL**  
**Guía Rápida de Configuración**  
 Lea atentamente este manual antes de poner en marcha el equipo y consérvelo para futuras consultas.

**FRANÇAIS**  
**Guide de configuration rapide**  
 Avant d'utiliser l'appareil, veuillez lire attentivement ce manuel et le conserver pour pouvoir vous y reporter ultérieurement.

⊕ : Depending upon model / Según el modelo / Selon le modèle